





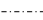


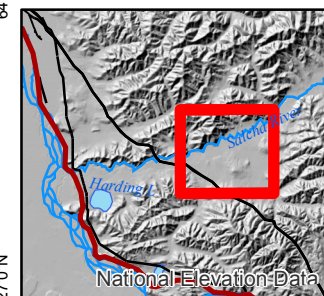
Mid Salcha Fire IAP Map

Approx: 1,165 Acres
Date: 07-18-2016 0600hrs

Perimeter Based on GPS Flight on 7/16/16

-  Helispot
-  Sling Site
-  Uncontrolled Fire Edge
-  TFR
-  Known Sites
-  RS2477
-  Trails

NAME	LAT	LONG
H-10	N64° 30.662'	W146° 26.244'
H-50	N64° 30.794'	W146° 23.142'
H-70	N64° 30.926'	W146° 21.651'
Best Cabin Sling	N64° 31.187'	W146° 21.351'
Nanook Sling	N64° 30.724'	W146° 23.557'
ICP	N64° 27.355'	W146° 54.752'
Salcha Boat Ramp	N64° 27.357'	W146° 54.741'



Projection: Alaska Albers NAD 83
GISS: L Nieves

1:68,000

