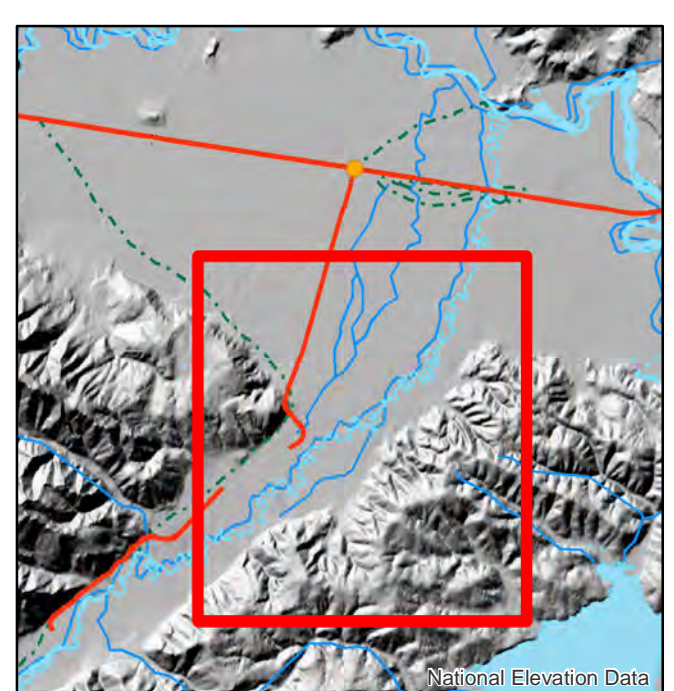


- Mile Posts
- Known Sites
- Cabin
- Camp
- Drop Point
- Fire Origin
- Helispot
- Sling Site
- Drilling Site
- Boat Launch
- Uncontrolled Fire Edge
- Completed Dozer Line
- Completed Line
- Improved Road
- Trail
- TFR
- Native Allotments
- Ownership Boundary
- Inactive Forestry Road
- Major Roads
- RS2477
- Trails
- Electrical Lines
- Historic Fire



| TYPE        | NAME                 | LAT          | LONG          |
|-------------|----------------------|--------------|---------------|
| Helispot    | H-5                  | N63° 11.649' | W143° 00.727' |
| Helispot    | H-25                 | N63° 12.202' | W142° 59.743' |
| Helispot    | H-45                 | N63° 12.977' | W142° 57.567' |
| Helispot    | H-55                 | N63° 13.968' | W142° 55.640' |
| Helispot    | H-57 (log deck)      | N63° 12.323' | W142° 57.849' |
| Helispot    | H-65/SS-2            | N63° 11.371' | W143° 00.152' |
| Sling Site  | SS-60                | N63° 11.526' | W142° 59.215' |
| Drop Point  | DP-1                 | N63° 10.052' | W143° 05.761' |
| Structure   | Cabin                | N63° 14.073' | W142° 55.928' |
| Helibase    | Helibase             | N63° 19.716' | W142° 57.335' |
| ICP         | ICP                  | N63° 19.652' | W142° 58.783' |
| Boat Launch | Boat Launch          | N63° 10.029' | W143° 05.737' |
| Landmark    | Avalon Drilling Site | N63° 10.746' | W142° 54.000' |
| Camp        | River Spike          | N63° 12.399' | W143° 00.146' |

# Tok River Fire Operations

Approx: 731 Acres  
Date: 07-19-2016

