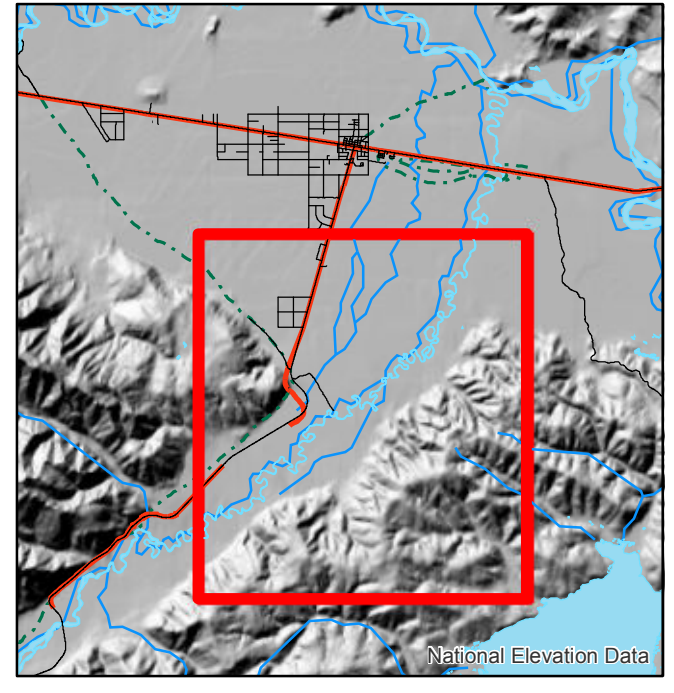


- Known Sites
- Mile Posts
- Cabin
- ⊙ Camp
- Drop Point
- ⊗ Fire Origin
- Helispot
- ⚓ Sling Site
- ⊕ Drilling Site
- 🚤 Boat Launch
- 🔥 Uncontrolled Fire Edge
- ⚡ Completed Dozer Line
- Completed Line
- Improved Road
- - - Trail
- ▭ Native Allotments
- Ownership Boundary
- Inactive Forestry Road
- Major Roads
- RS2477
- Trails
- Electrical Lines
- ⊕ Historic Fire



TYPE	NAME	LAT	LONG
Helispot	H-5	N63° 11.649'	W143° 00.727'
Helispot	H-25	N63° 12.202'	W142° 59.743'
Helispot	H-45	N63° 12.977'	W142° 57.567'
Helispot	H-55	N63° 13.968'	W142° 55.640'
Helispot	H-57 (log deck)	N63° 12.323'	W142° 57.849'
Helispot	H-65/SS-2	N63° 11.371'	W143° 00.152'
Helispot	H-58	N63° 11.969'	W142° 58.460'
Sling Site	SS-59	N63° 11.692'	W142° 58.402'
Sling Site	SS-60	N63° 11.526'	W142° 59.215'
Drop Point	DP-1	N63° 10.052'	W143° 05.761'
Structure	Cabin	N63° 14.073'	W142° 55.928'
Helibase	Helibase	N63° 19.716'	W142° 57.335'
ICP	ICP	N63° 19.652'	W142° 58.783'
Boat Launch	Boat Launch	N63° 10.029'	W143° 05.737'
Landmark	Avalon Drilling Site	N63° 10.746'	W142° 54.000'
Camp	River Spike	N63° 12.399'	W143° 00.146'
Camp	Oxbow Spike	N63° 12.620'	W142° 57.846'
IA Spot	IA Spot	N63° 11.792'	W142° 59.660'

Tok River Fire Operations

Approx: 669 Acres GPS Perimeter
Date: 07-24-2016

1:40,000
Projection: Alaska Albers NAD 83
GISS: L Nieves