

**Yokneda Lake
AK-CRS-474
Planning Map
NAD83
July 18, 2016**

**474 - Yokneda Lake Fire
Start Date: 7/14/2016**

Fire Origin

2016 AK Interagency Known Sites

- Critical
- Full
- Avoid
- Unknown
- Non-Sensitive

Wrangell-St. Elias NP and Pres Bndry

- Wrangell-St. Elias NP and Pres Bndry

Native Allotments - NPS Land Status

- Native Allotments - NPS Land Status
- Statewide Native Allotments - BLM AFS

Alaska Statewide Land Status

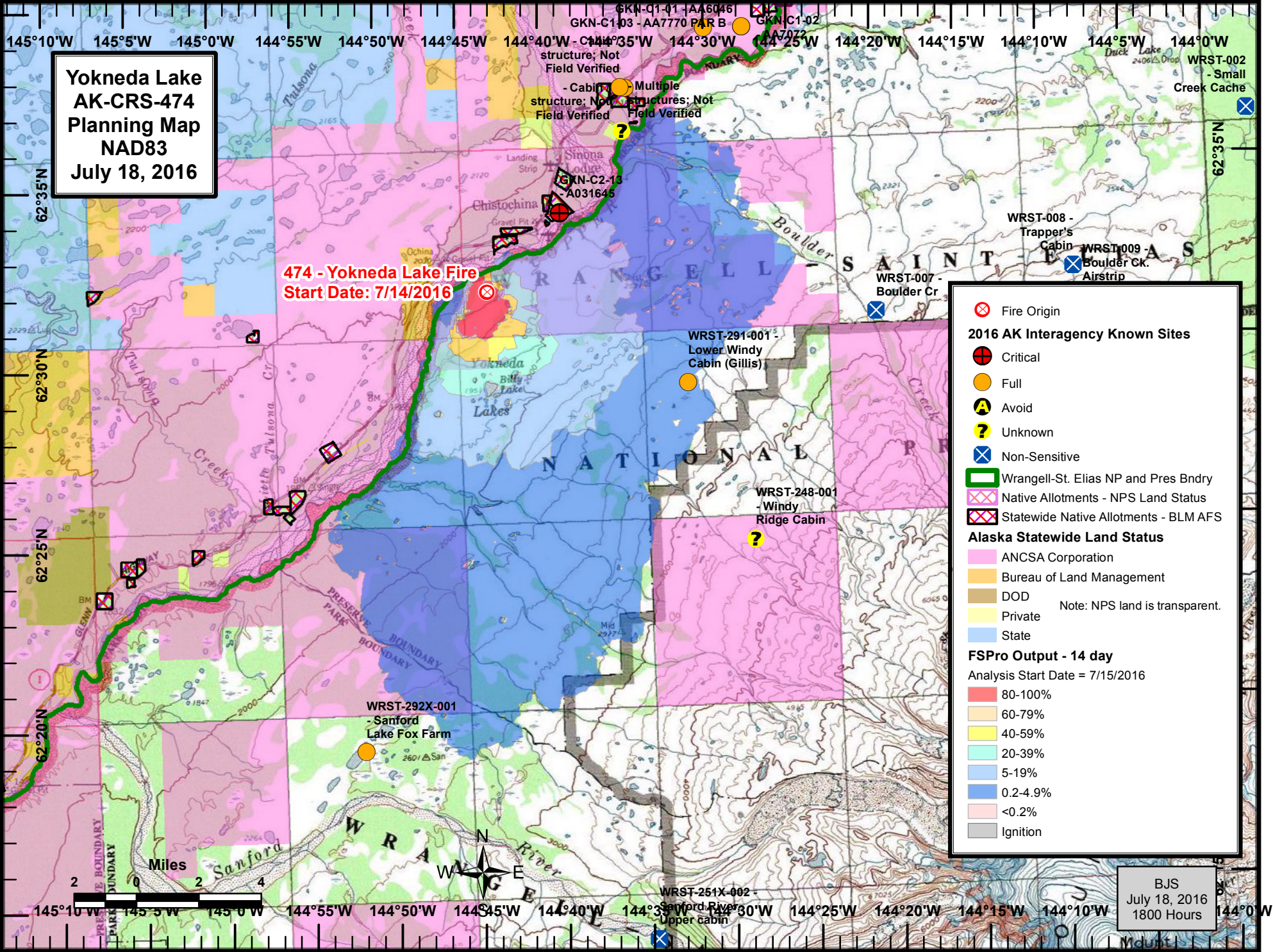
- ANCSA Corporation
- Bureau of Land Management
- DOD
- Private
- State

Note: NPS land is transparent.

FSPro Output - 14 day

Analysis Start Date = 7/15/2016

- 80-100%
- 60-79%
- 40-59%
- 20-39%
- 5-19%
- 0.2-4.9%
- <0.2%
- Ignition



BJS
July 18, 2016
1800 Hours