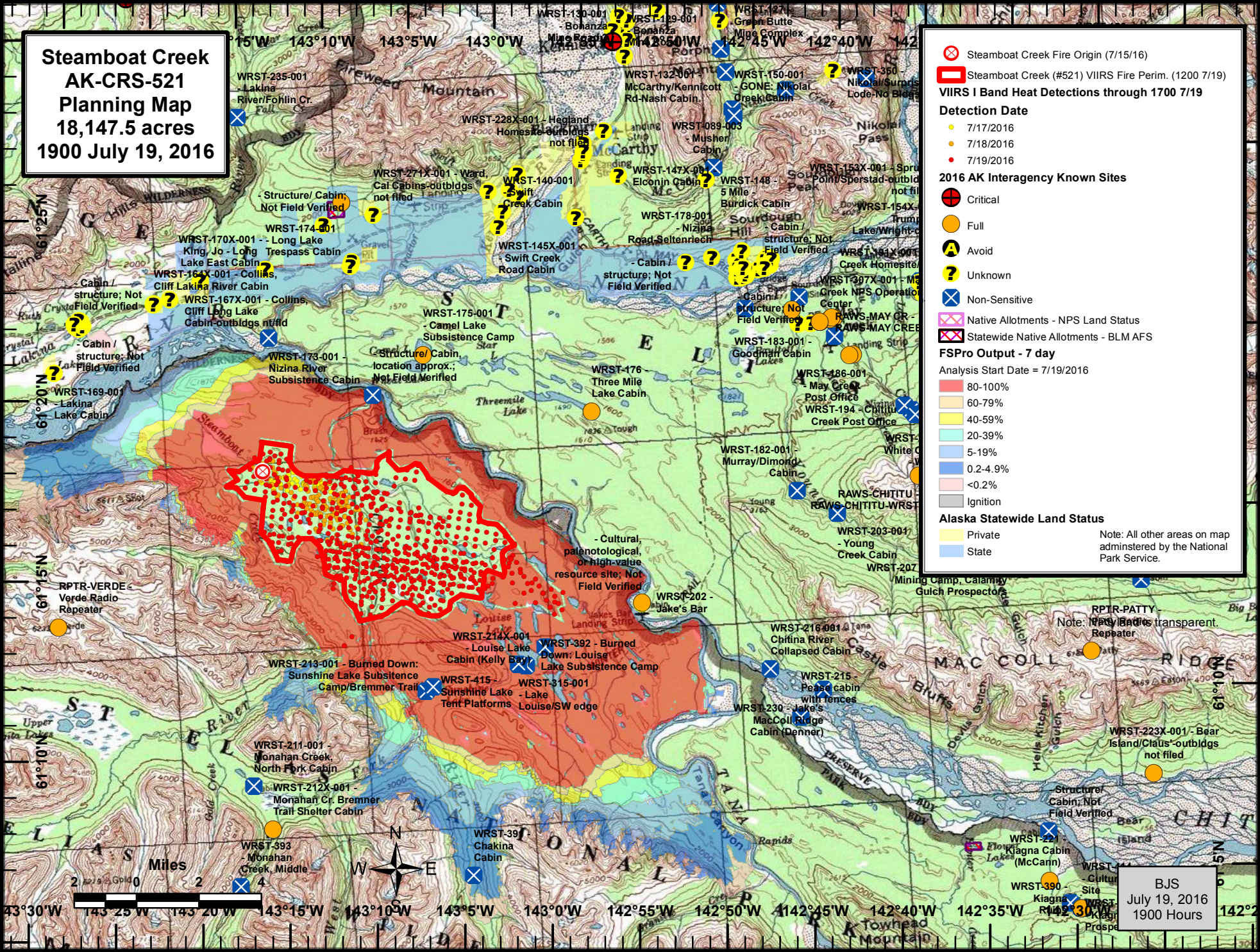


**Steamboat Creek
AK-CRS-521
Planning Map
18,147.5 acres
1900 July 19, 2016**



- ⊗ Steamboat Creek Fire Origin (7/15/16)
- Steamboat Creek (#521) VIIRS Fire Perim. (1200 7/19)
- VIIRS I Band Heat Detections through 1700 7/19**
- Detection Date**
- 7/17/2016
- 7/18/2016
- 7/19/2016
- 2016 AK Interagency Known Sites**
- ⊕ Critical
- Full
- A Avoid
- ? Unknown
- ⊗ Non-Sensitive
- Native Allotments - NPS Land Status
- Statewide Native Allotments - BLM AFS
- FSPro Output - 7 day**
- Analysis Start Date = 7/19/2016
- 80-100%
- 60-79%
- 40-59%
- 20-39%
- 5-19%
- 0.2-4.9%
- <0.2%
- Ignition
- Alaska Statewide Land Status**
- Private
- State

Note: All other areas on map administered by the National Park Service.

BJS
July 19, 2016
1900 Hours