

Wrangell - St. Elias National Park and Preserve Steamboat Creek Fire (#521) - 1900 July 19, 2016

Legend

- Weather Stations
- Fire Origin
- Steamboat Creek (#521) VIIRS Fire Perimeter (1200 7/19)
- VIIRS 1 Band Heat Detections through 1700 7/19
- Detection Date
 - 7/17/2016
 - 7/18/2016
 - 7/19/2016
- 2016 AK Interagency Known Sites
 - Critical
 - Full
 - Avoid
 - Unknown
 - Non-Sensitive
- Roads - Statewide
 - Major Highway
 - Highway or Principal Road
 - Fires - Historic Wildland Fire Perimeters 1940-2015
 - Native Allotments - NPS Land Status
 - Statewide Native Allotments - BLM/AFS
- Fire Management Options- 2016
 - Critical
 - Full
 - Modified
- Alaska Statewide Land Status
 - Private
 - State

Note: All other areas on map administered by the National Park Service.

0 1 2 3 4 Miles

1:63,360

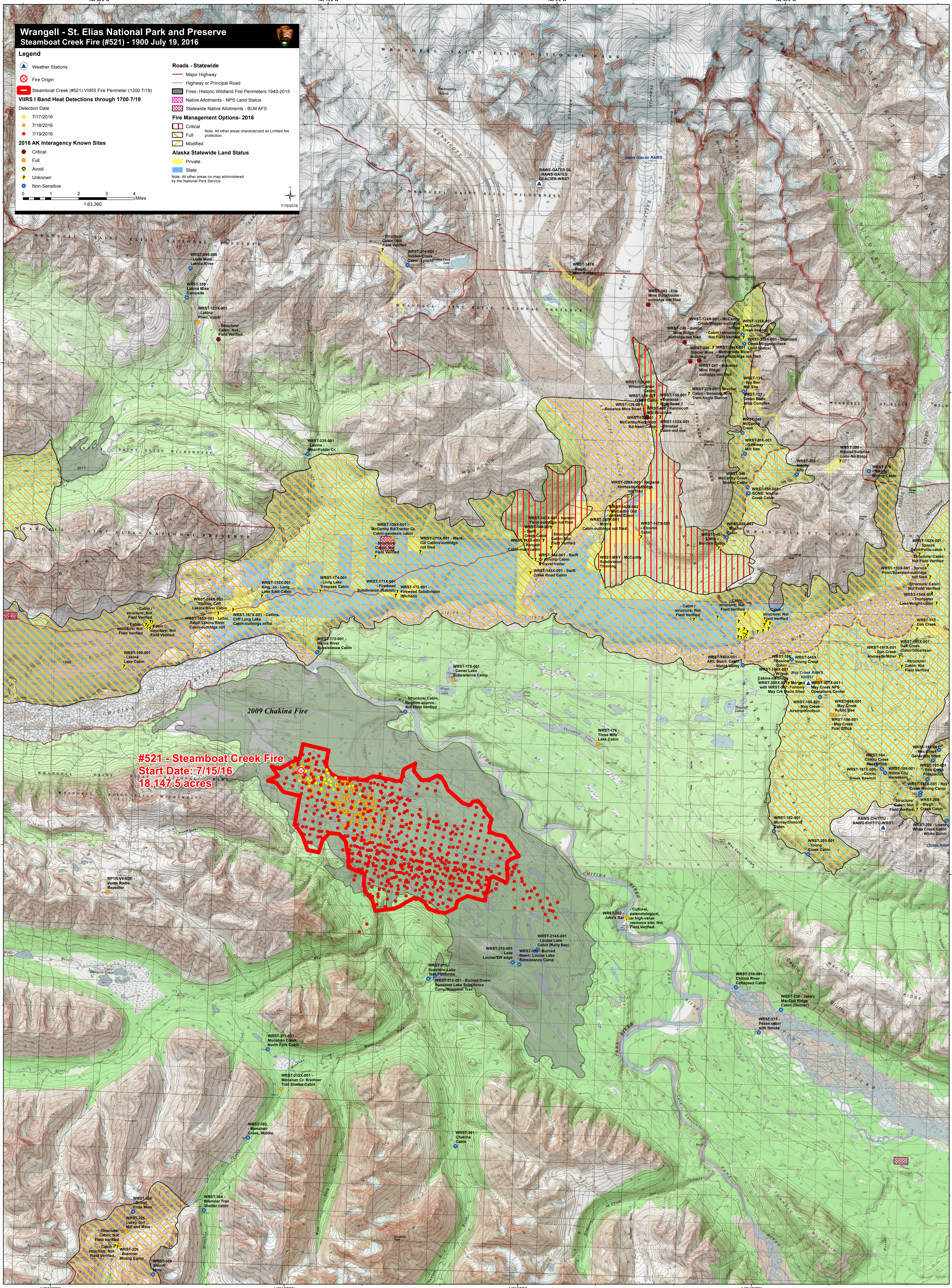
7/19/2016

61130116

61130116

61130116

61130116



#521 - Steamboat Creek Fire
Start Date: 7/15/16
18,147.5 acres

2009 Chakina Fire