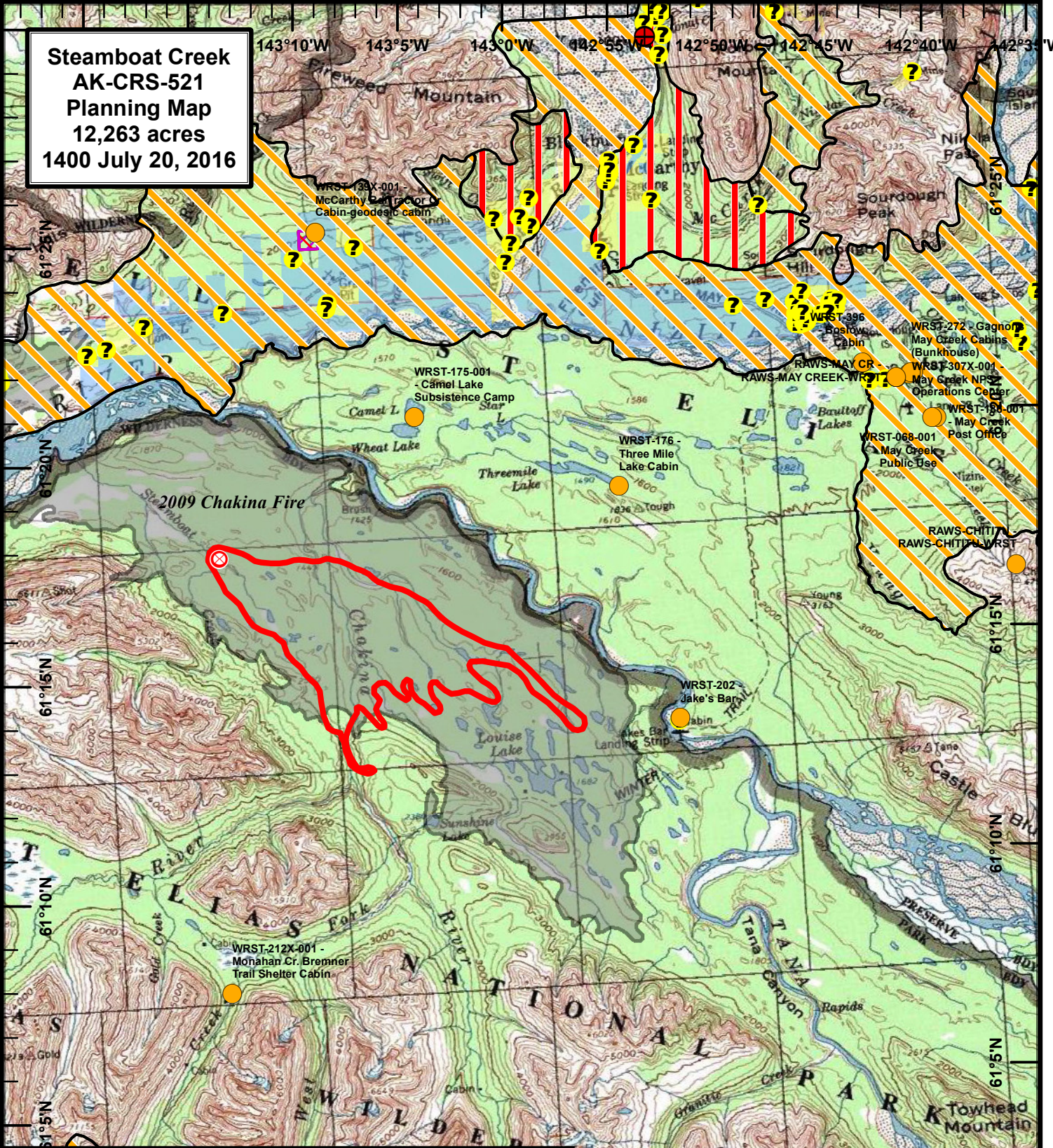


**Steamboat Creek
AK-CRS-521
Planning Map
12,263 acres
1400 July 20, 2016**



	Steamboat Creek Fire Origin (7/15/16)		Native Allotments - NPS Land Status
	Steamboat Creek Perimeter (1800 7/19)		Statewide Native Allotments - BLM AFS
	Fires- Historic Wildland Fire Perimeters 1940-2015	Fire Management Options- 2016	
2016 AK Interagency Known Sites			
	Critical		Critical
	Full		Full
	Avoid		Modified
	Unknown	Alaska Statewide Land Status	
Note: Only Full sites are labeled. Also, Non-Sensitive sites are not shown on map.			Private
			State
		Note: All other areas on map administered by the National Park Service.	

