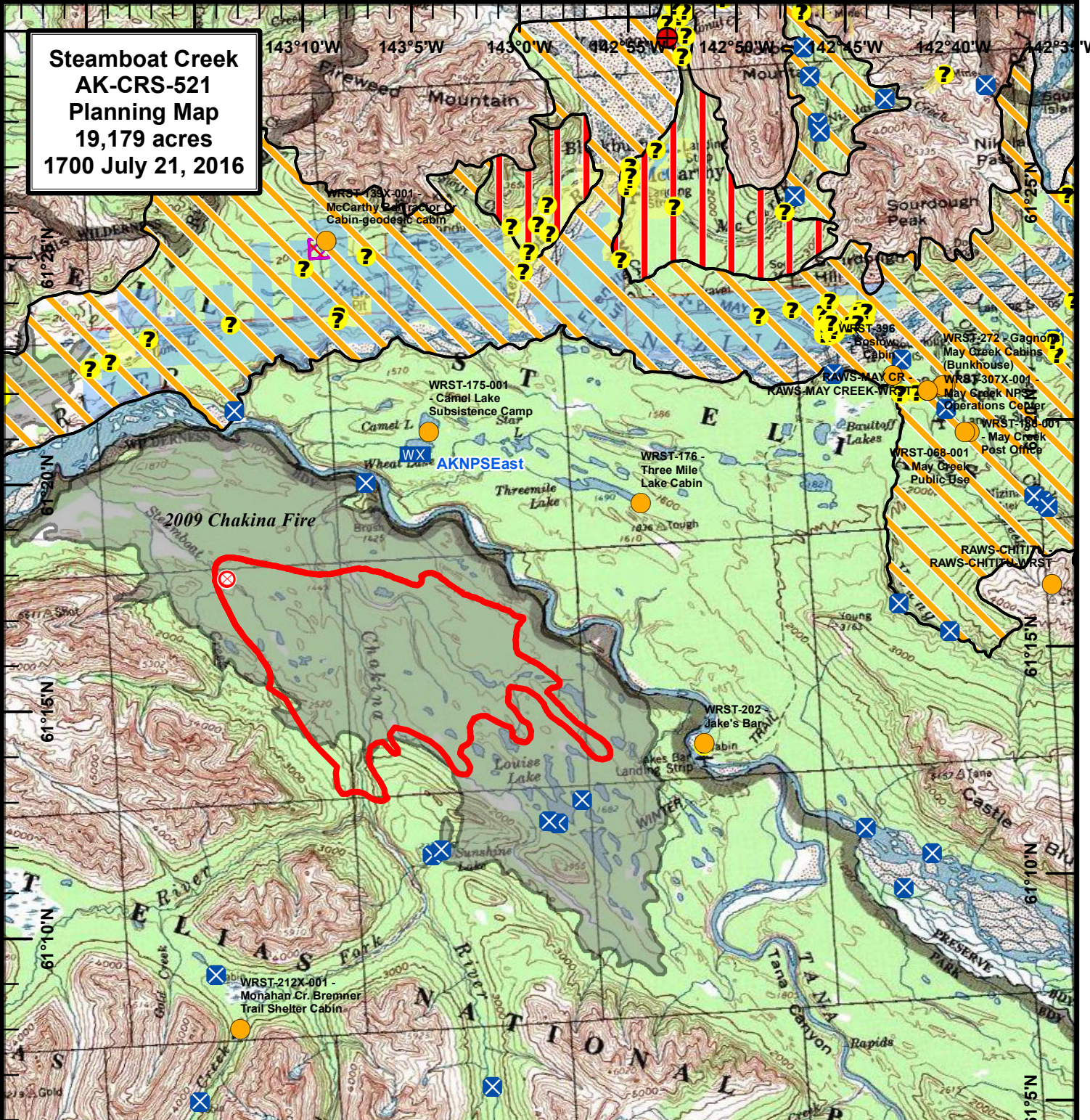


**Steamboat Creek
AK-CRS-521
Planning Map
19,179 acres
1700 July 21, 2016**



Portable RAWS	Native Allotments - NPS Land Status
Steamboat Creek Fire Origin (7/15/16)	Statewide Native Allotments - BLM AFS
Steamboat Creek Perimeter (1800 7/20)	Fire Management Options- 2016
Fires- Historic Wildland Fire Perimeters 1940-2015	Critical
2016 AK Interagency Known Sites	Full
Critical	Modified
Full	Alaska Statewide Land Status
Avoid	Private
Unknown	State
Non-Sensitive	<small>Note: All other areas on map administered by the National Park Service.</small>
<small>Note: Only Full sites are labeled.</small>	<small>Note: All other areas on map administered by the National Park Service.</small>

2 0 2 4 Miles

W N S E

