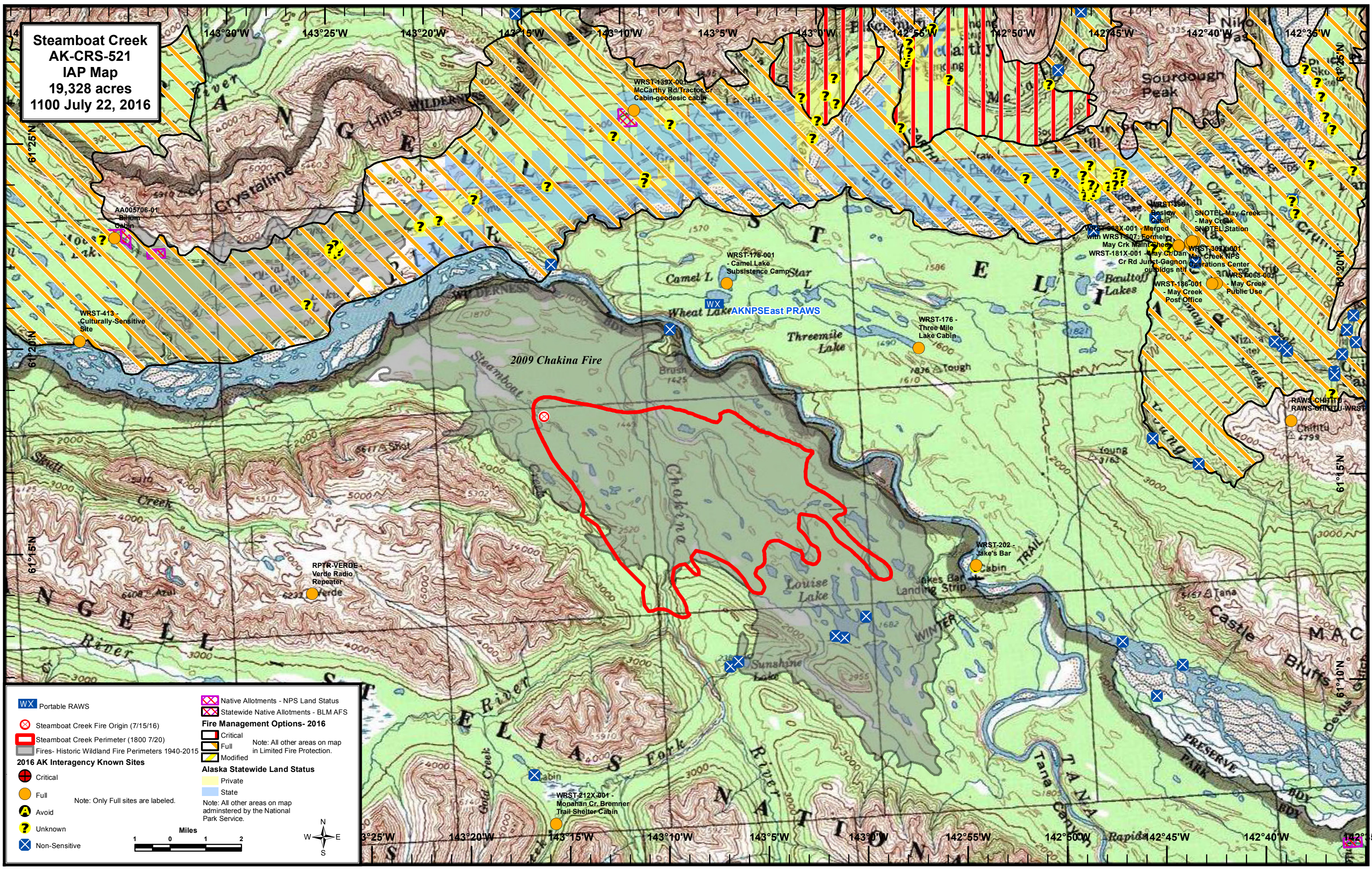


**Steamboat Creek  
AK-CRS-521  
IAP Map  
19,328 acres  
1100 July 22, 2016**



Portable RAWS	Native Allotments - NPS Land Status
Steamboat Creek Fire Origin (7/15/16)	Statewide Native Allotments - BLM AFS
Steamboat Creek Perimeter (1800 7/20)	<b>Fire Management Options- 2016</b>
Fires- Historic Wildland Fire Perimeters 1940-2015	Critical
<b>2016 AK Intergency Known Sites</b>	Full
Critical	Modified
Full	<b>Alaska Statewide Land Status</b>
Avoid	Private
Unknown	State
Non-Sensitive	<small>Note: All other areas on map administered by the National Park Service.</small>

Note: Only Full sites are labeled.

Note: All other areas on map in Limited Fire Protection.

