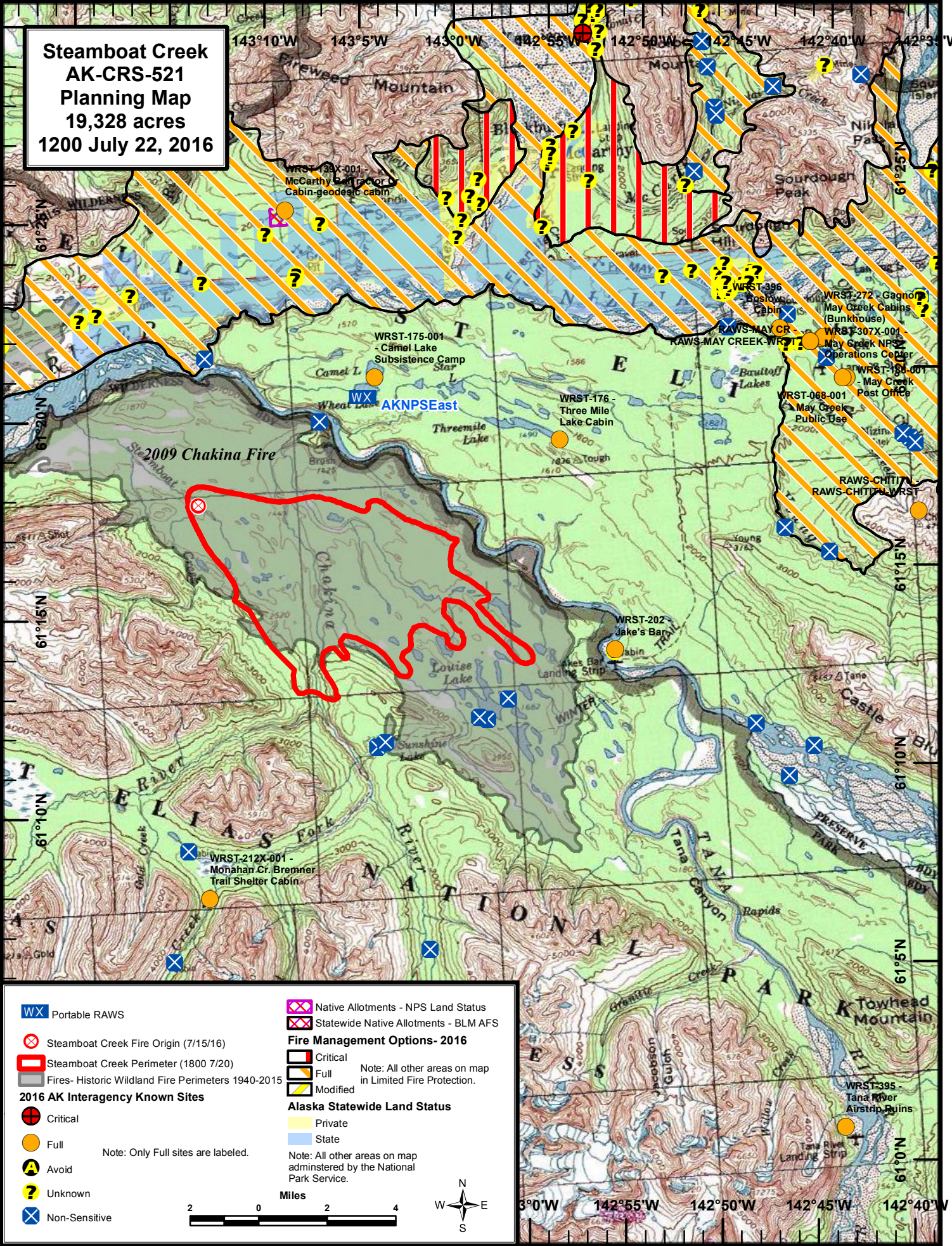


**Steamboat Creek
AK-CRS-521
Planning Map
19,328 acres
1200 July 22, 2016**



Portable RAWS	Native Allotments - NPS Land Status
Steamboat Creek Fire Origin (7/15/16)	Statewide Native Allotments - BLM AFS
Steamboat Creek Perimeter (1800 7/20)	Fire Management Options- 2016
Fires- Historic Wildland Fire Perimeters 1940-2015	Critical
2016 AK Interagency Known Sites	Full
Critical	Modified
Full	Alaska Statewide Land Status
Avoid	Private
Unknown	State
Non-Sensitive	Note: All other areas on map administered by the National Park Service.
Note: Only Full sites are labeled.	

2 0 2 4 Miles

W N S E

143°10'W 143°5'W 143°0'W 142°55'W 142°50'W 142°45'W 142°40'W 142°35'W

61°25'N 61°20'N 61°15'N 61°10'N 61°05'N

142°55'W 142°50'W 142°45'W 142°40'W