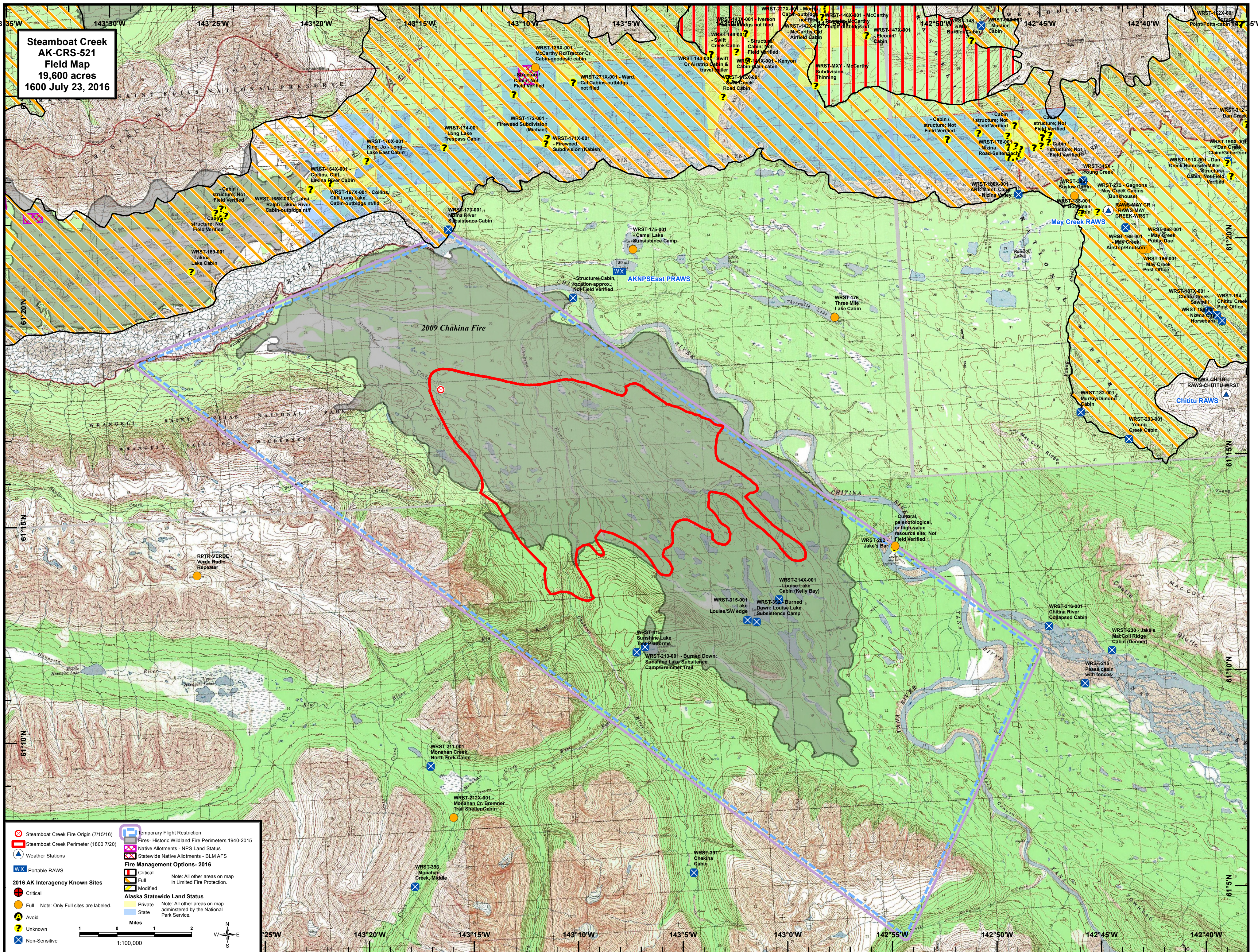


**Steamboat Creek  
AK-CRS-521  
Field Map  
19,600 acres  
1600 July 23, 2016**



	Steamboat Creek Fire Origin (7/15/16)		Temporary Flight Restriction
	Steamboat Creek Perimeter (1800 7/20)		Fires- Historic Wildland Fire Perimeters 1940-2015
	Weather Stations		Native Allotments - NPS Land Status
	Portable RAWs		Statewide Native Allotments - BLM AFS
	2016 AK Interagency Known Sites		<b>Fire Management Options- 2016</b>
	Critical		Critical
	Full Note: Only Full sites are labeled.		Full
	Avoid		Modified
	Unknown		State
	Non-Sensitive		Private
			State

**Alaska Statewide Land Status**  
Note: All other areas on map administered by the National Park Service.

1:100,000