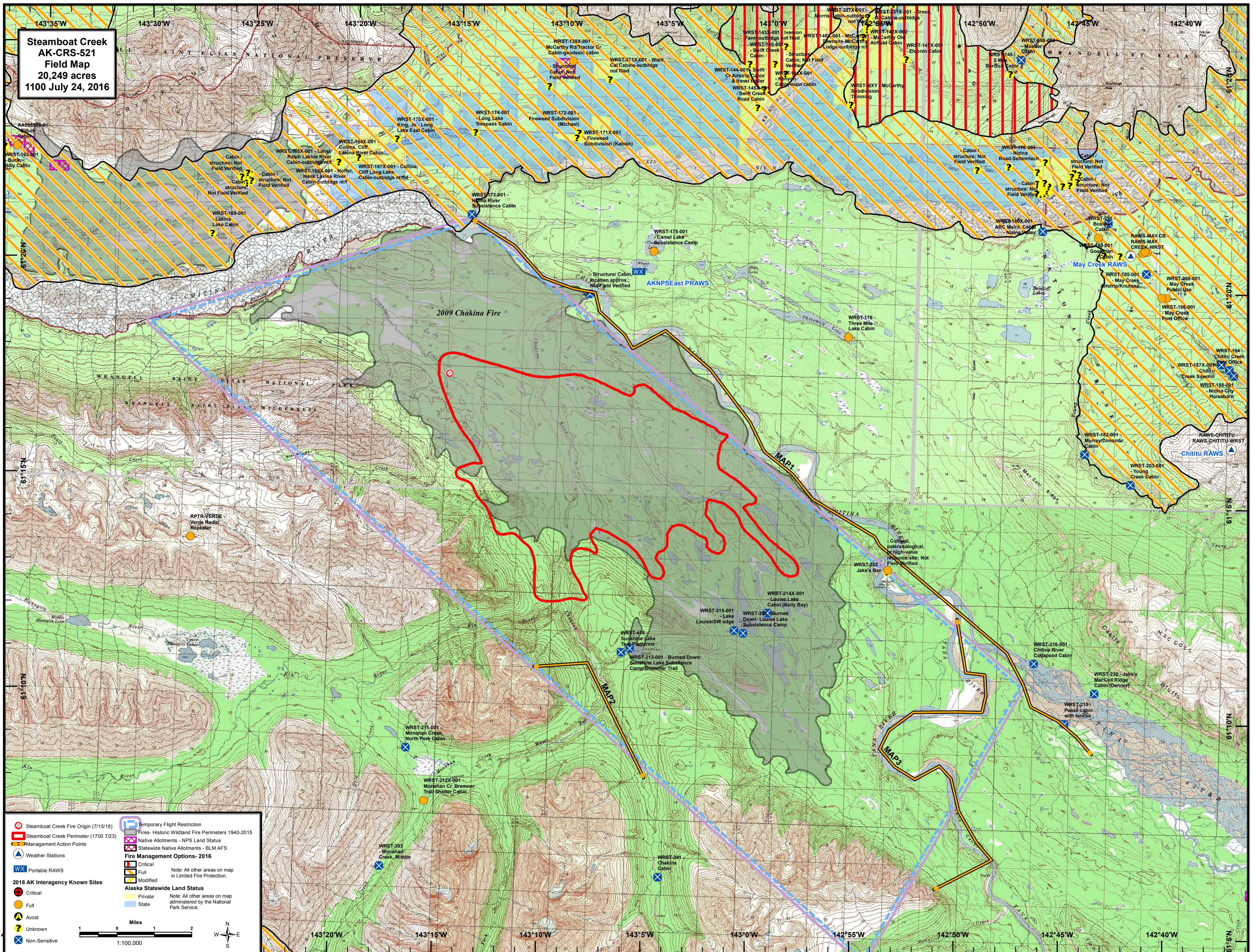


**Steamboat Creek
AK-CRS-521
Field Map
20,249 acres
1100 July 24, 2016**



	Steamboat Creek Fire Origin (7/15/16)		Temporary Flight Restriction
	Steamboat Creek Perimeter (1700 7/23)		Fires - Historic Wildland Fire Perimeters 1940-2015
	Management Action Points		Native Allotments - NPS Land Status
	Weather Stations		Statewide Native Allotments - BLM AFS
	Portable RAWs		Fire Management Options - 2016
	2016 AK Interagency Known Sites		Critical
			Full
			Modified
			State
			Private
			State
			Non-Sensitive

2016 AK Interagency Known Sites

Alaska Statewide Land Status

Note: All other areas on map administered by the National Park Service.

1:100,000

