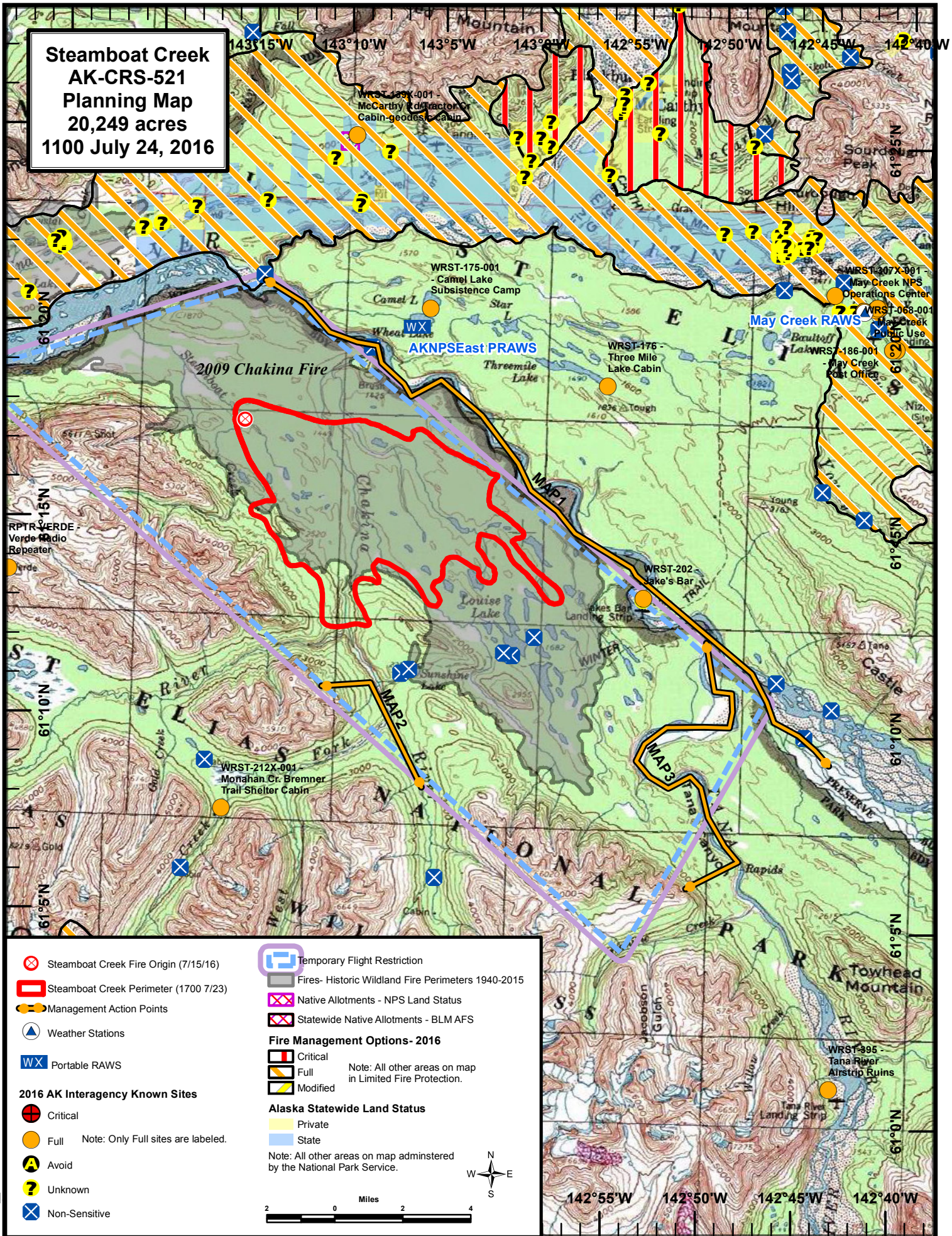


**Steamboat Creek
AK-CRS-521
Planning Map
20,249 acres
1100 July 24, 2016**



| | | | |
|---|---------------------------------------|--------------------------------------|--|
| | Steamboat Creek Fire Origin (7/15/16) | | Temporary Flight Restriction |
| | Steamboat Creek Perimeter (1700 7/23) | | Fires- Historic Wildland Fire Perimeters 1940-2015 |
| | Management Action Points | | Native Allotments - NPS Land Status |
| | Weather Stations | | Statewide Native Allotments - BLM AFS |
| | Portable RAWS | Fire Management Options- 2016 | |
| 2016 AK Interagency Known Sites | | | Critical |
| | Critical | | Full |
| | Full | | Modified |
| | Avoid | Alaska Statewide Land Status | |
| | Unknown | | Private |
| | Non-Sensitive | | State |
| Note: All other areas on map administered by the National Park Service. | | | |

Note: All other areas on map in Limited Fire Protection.

Miles 0 2 4