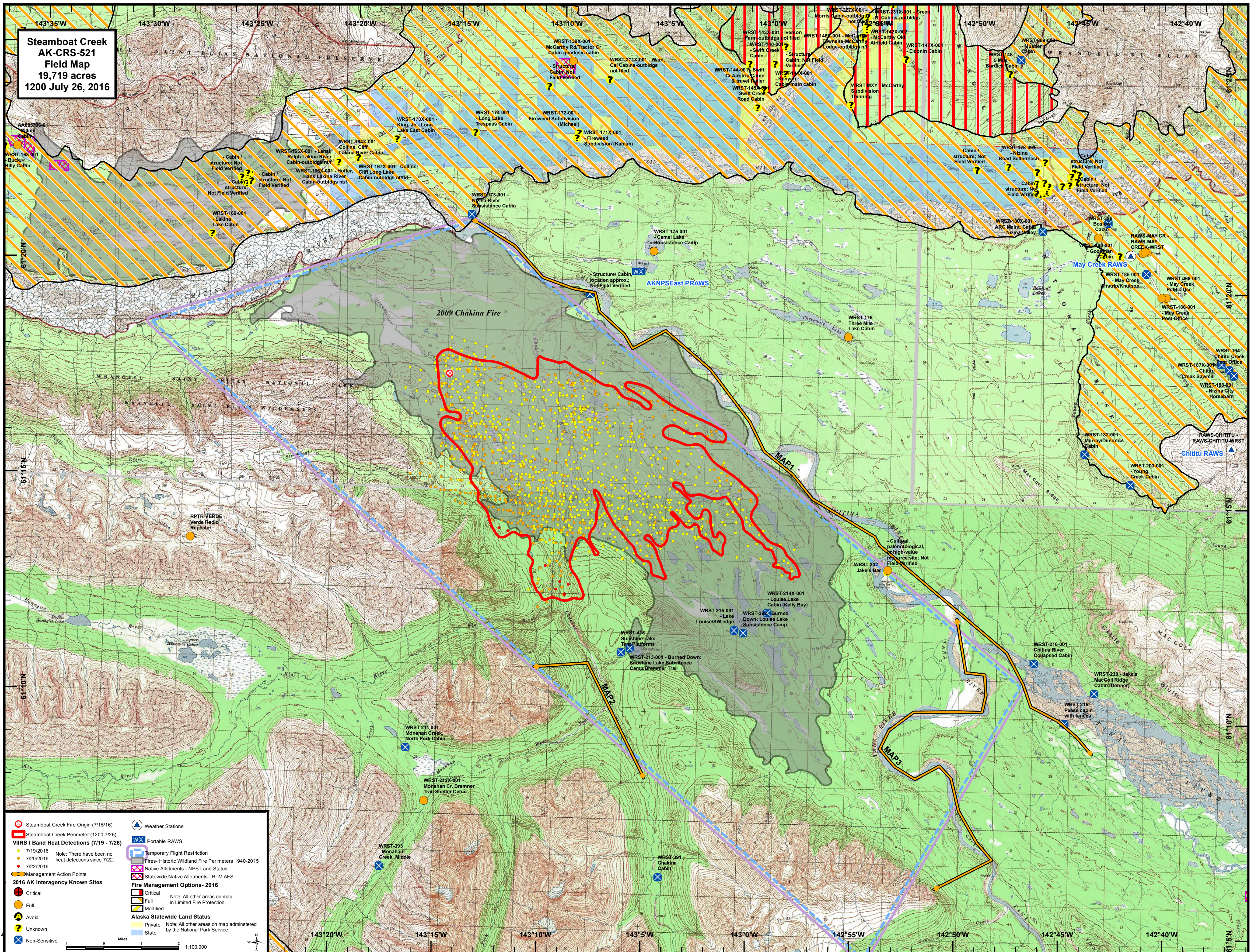


**Steamboat Creek
AK-CRS-521
Field Map
19,719 acres
1200 July 26, 2016**



Steamboat Creek Fire Origin (7/15/16)	Weather Stations
Steamboat Creek Perimeter (1200 7/25)	Portable RAWs
VIIRS I Band Heat Detections (7/19 - 7/26)	Temporary Flight Restriction
7/19/2016	Fires - Historic Wildland Fire Perimeters 1940-2015
7/20/2016	Native Allotments - NPS Land Status
7/22/2016	Statewide Native Allotments - BLM AFS
Management Action Points	Fire Management Options- 2016
2016 AK Interagency Known Sites	Critical
Critical	Full
Full	Modified
Avoid	Alaska Statewide Land Status
Unknown	Private
Non-Sensitive	State
	<small>Note: All other areas on map in Limited Fire Protection.</small>
	<small>Note: All other areas on map administered by the National Park Service.</small>

