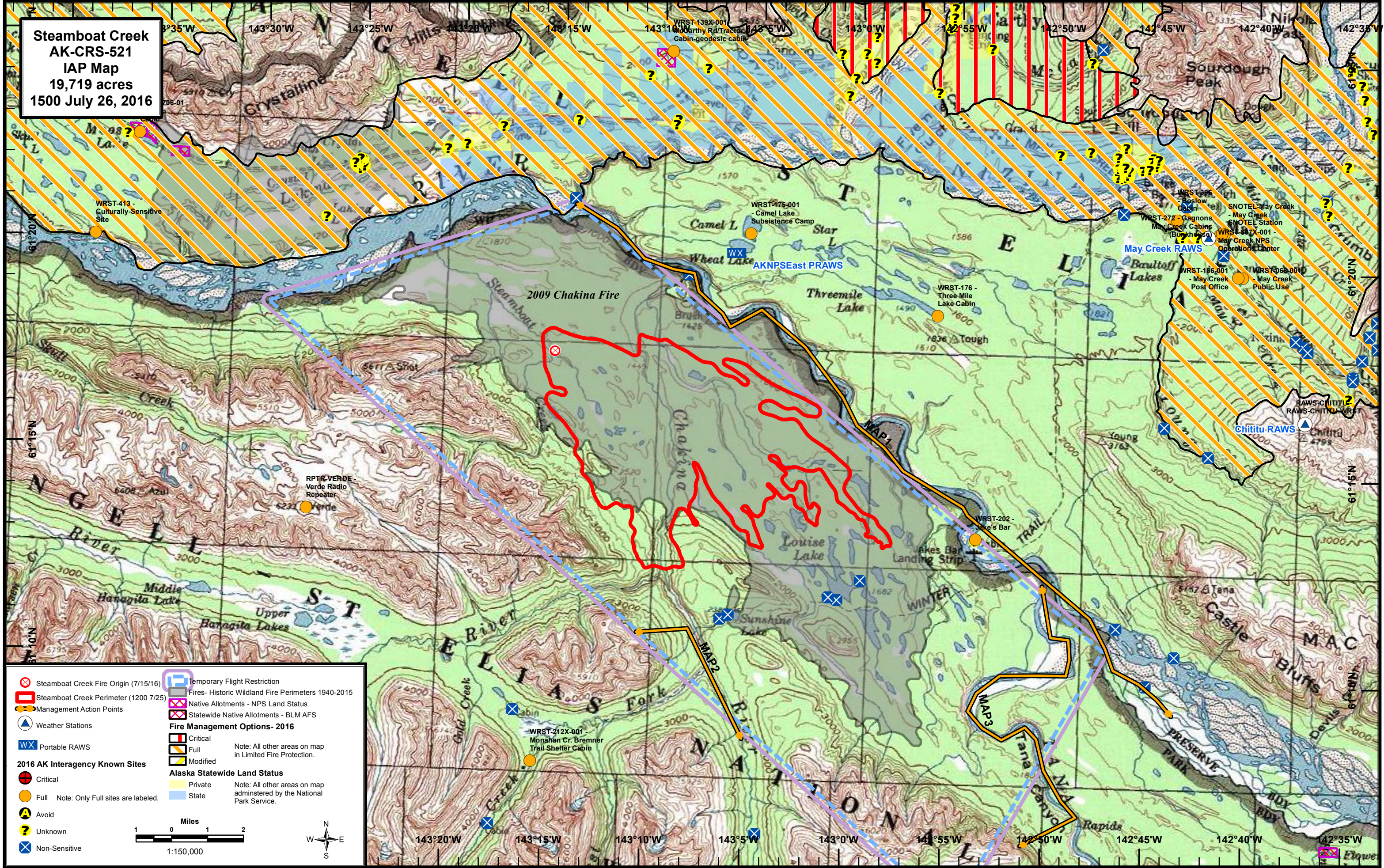


**Steamboat Creek  
AK-CRS-521  
IAP Map  
19,719 acres  
1500 July 26, 2016**



	Steamboat Creek Fire Origin (7/15/16)		Temporary Flight Restriction
	Steamboat Creek Perimeter (1200 7/25)		Fires- Historic Wildland Fire Perimeters 1940-2015
	Management Action Points		Native Allotments - NPS Land Status
	Weather Stations		Statewide Native Allotments - BLM AFS
	Portable RAWS		Critical
	Critical		Full
	Full		Modified
	Avoid		State
	Unknown		Private
	Non-Sensitive		State

**2016 AK Interagency Known Sites**

Note: All other areas on map administered by the National Park Service.

**Alaska Statewide Land Status**

Note: All other areas on map administered by the National Park Service.

**Fire Management Options - 2016**

Note: All other areas on map in Limited Fire Protection.

Miles  
1 0 1 2  
1:150,000