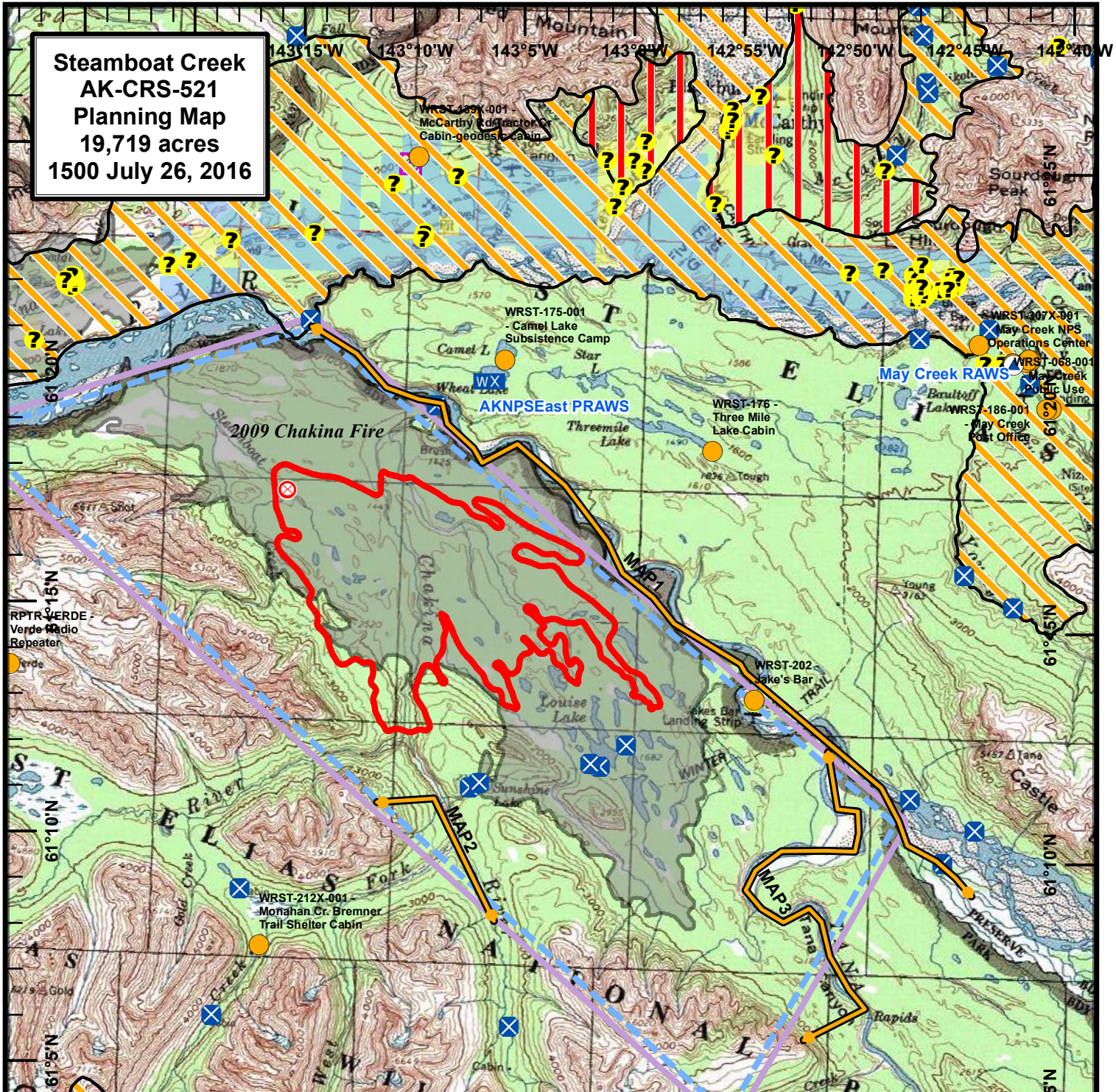


**Steamboat Creek
AK-CRS-521
Planning Map
19,719 acres
1500 July 26, 2016**



	Steamboat Creek Fire Origin (7/15/16)		Temporary Flight Restriction
	Steamboat Creek Perimeter (1200 7/25)		Fires- Historic Wildland Fire Perimeters 1940-2015
	Management Action Points		Native Allotments - NPS Land Status
	Weather Stations		Statewide Native Allotments - BLM AFS
	Portable RAWS	Fire Management Options- 2016	
2016 AK Interagency Known Sites			
	Critical		Critical
	Full Note: Only Full sites are labeled.		Full Note: All other areas on map in Limited Fire Protection.
	Avoid		Modified
	Unknown	Alaska Statewide Land Status	
	Non-Sensitive		Private
			State
		Note: All other areas on map administered by the National Park Service.	

