

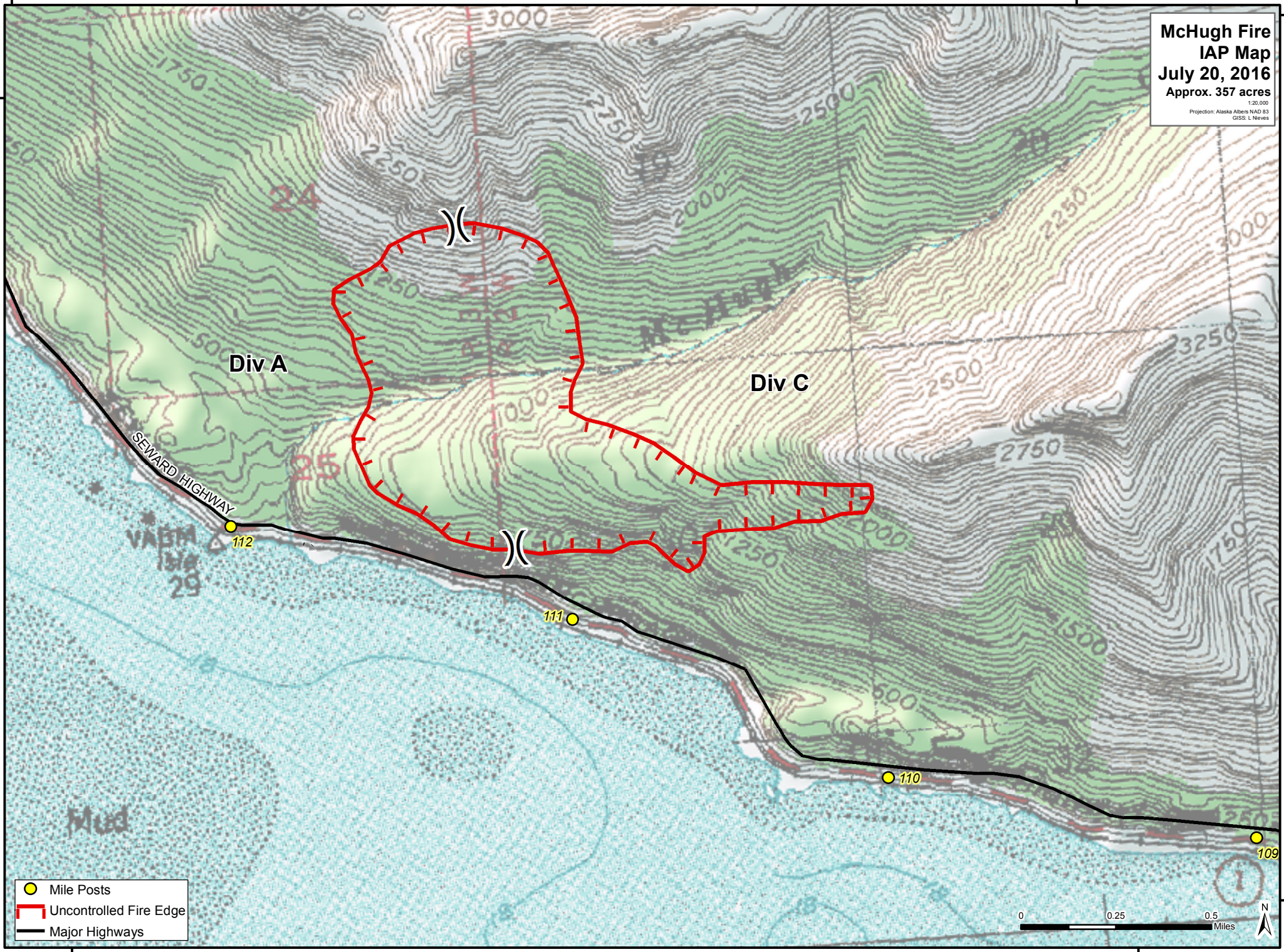
149°45'0"W

149°40'0"W

61°20'0"N

61°20'0"N




**McHugh Fire**  
**IAP Map**  
**July 20, 2016**  
**Approx. 357 acres**  
1:20,000  
 Projection: Alaska Albers NAD 83  
 GISS, L. Neves



149°45'0"W

149°40'0"W

61°00'0"N

-  Mile Posts
-  Uncontrolled Fire Edge
-  Major Highways

