

149°45'0"W

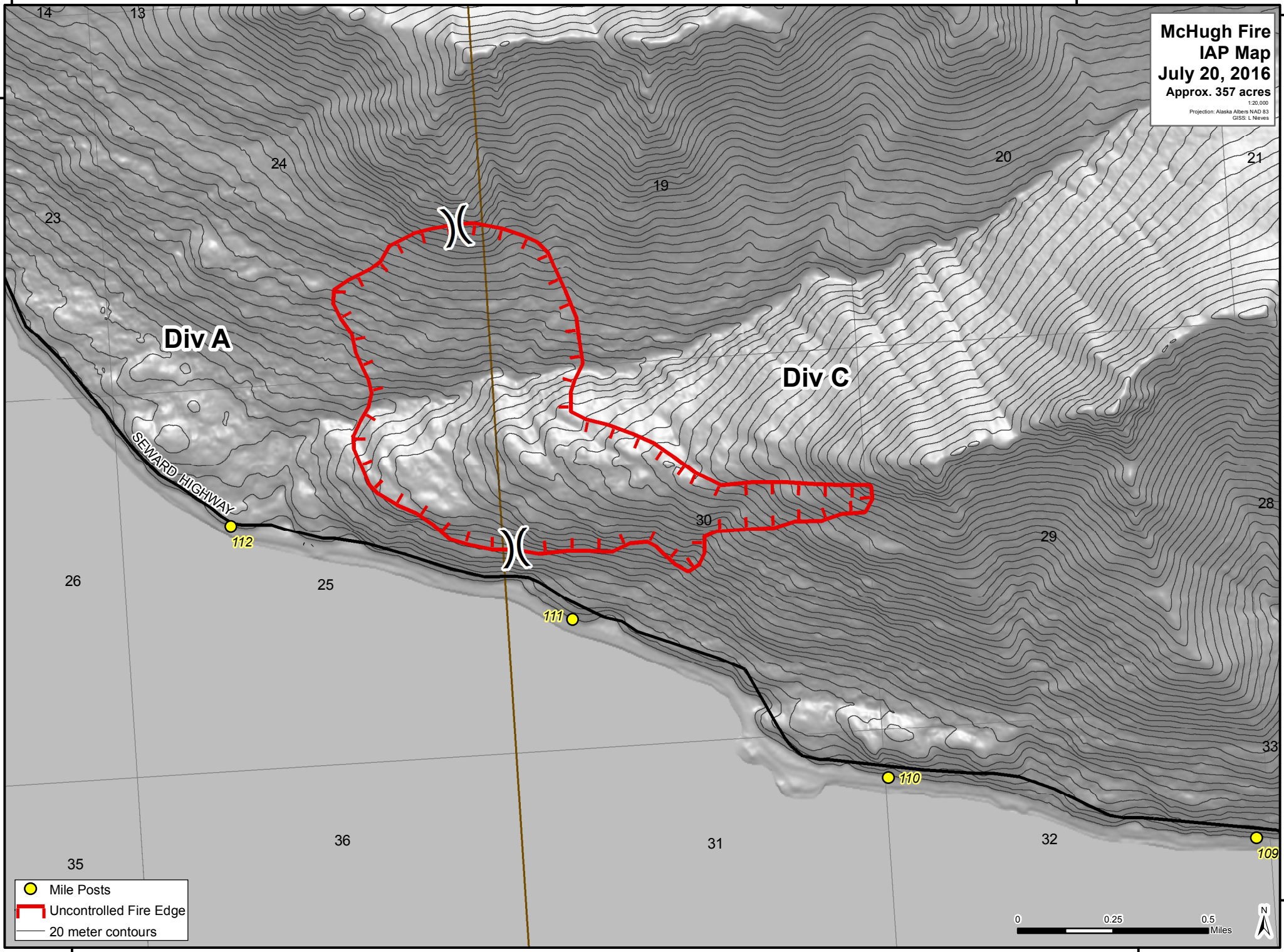
149°40'0"W




61°20'0"N

61°20'0"N

McHugh Fire
IAP Map
July 20, 2016
 Approx. 357 acres

1:20,000
 Projection: Alaska Albers NAD 83
 GISS: L Neves



-  Mile Posts
-  Uncontrolled Fire Edge
-  20 meter contours



149°45'0"W

149°40'0"W

61°00'0"N