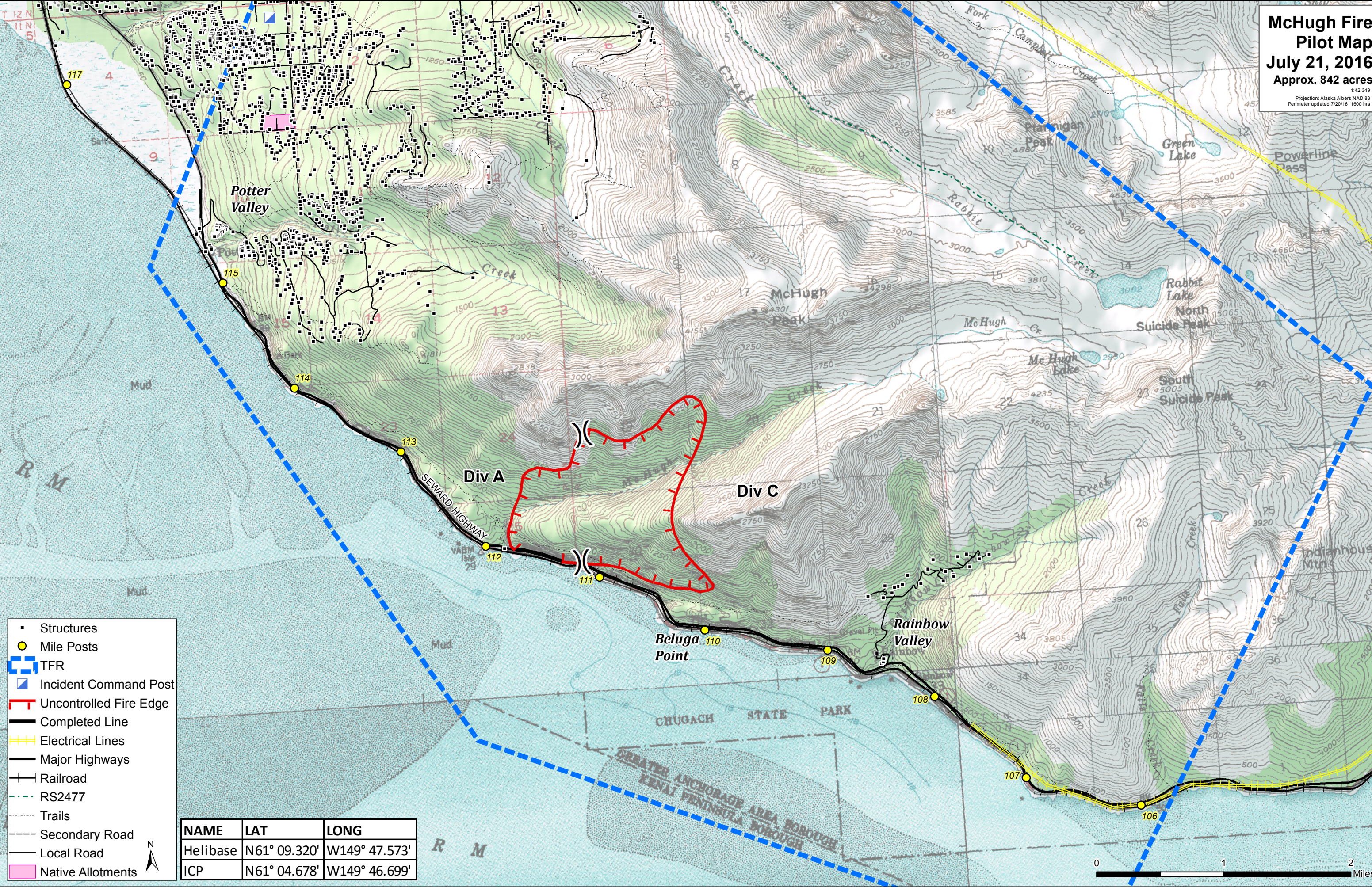


**McHugh Fire
Pilot Map
July 21, 2016**
Approx. 842 acres

1:42,349
Projection: Alaska Albers NAD 83
Perimeter updated 7/20/16 1600 hrs



- Structures
- Mile Posts
- ▭ TFR
- ▭ Incident Command Post
- ▭ Uncontrolled Fire Edge
- ▭ Completed Line
- ▭ Electrical Lines
- ▭ Major Highways
- ▭ Railroad
- ▭ RS2477
- ▭ Trails
- ▭ Secondary Road
- ▭ Local Road
- ▭ Native Allotments

NAME	LAT	LONG
Helibase	N61° 09.320'	W149° 47.573'
ICP	N61° 04.678'	W149° 46.699'



Map coordinates: 149°50'0"W, 149°45'0"W, 149°40'0"W, 149°35'0"W (Longitude); 61°40'0"N, 61°20'0"N, 61°00'0"N (Latitude)

Map labels include: Potter Valley, Rainbow Valley, Beluga Point, McHugh Peak, Rabbit Lake, Suicide Peak, Chugach State Park, Kenai Peninsula Borough, and Greater Anchorage Area Borough.