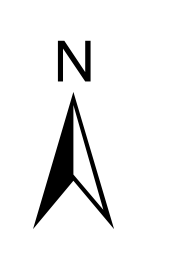


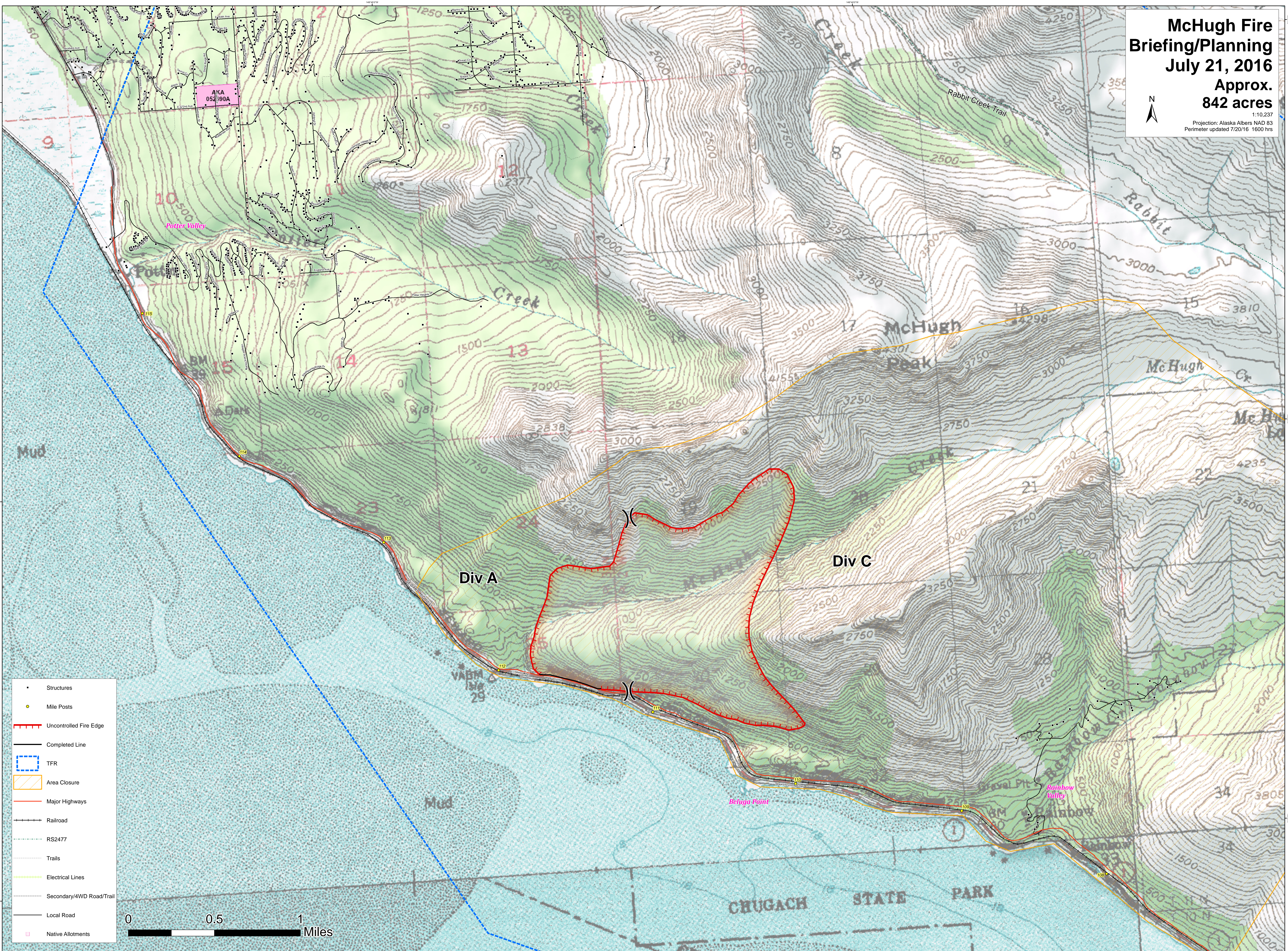
McHugh Fire Briefing/Planning

July 21, 2016

Approx. 842 acres



1:10,237
Projection: Alaska Albers NAD 83
Perimeter updated 7/20/16 1600 hrs



- Structures
- Mile Posts
- Uncontrolled Fire Edge
- Completed Line
- TFR
- Area Closure
- Major Highways
- Railroad
- RS2477
- Trails
- Electrical Lines
- Secondary/4WD Road/Trail
- Local Road
- Native Allotments

0 0.5 1 Miles