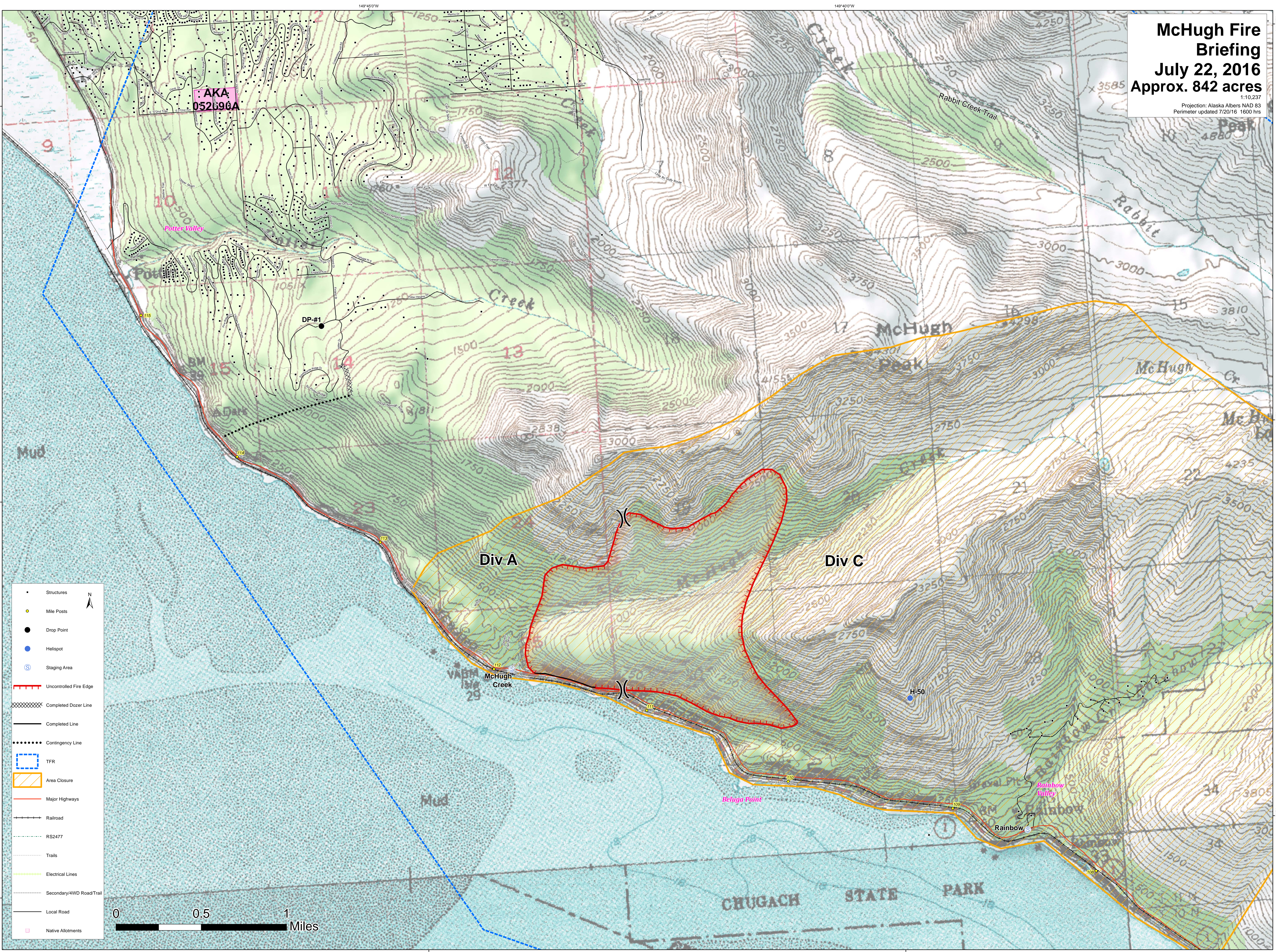


McHugh Fire Briefing

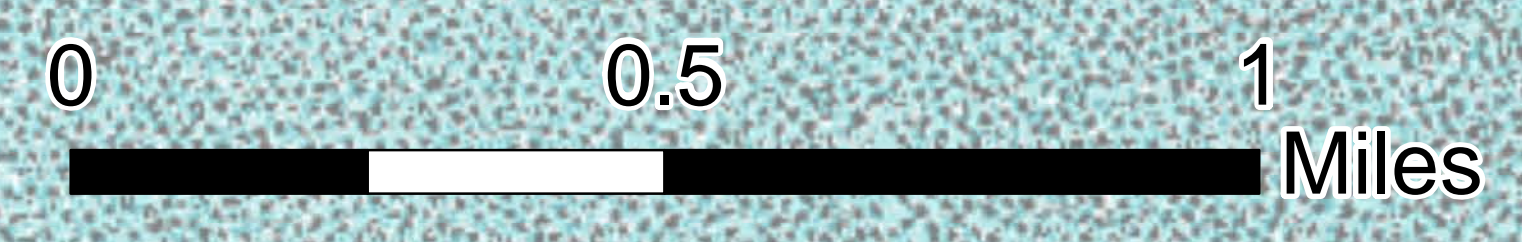
July 22, 2016

Approx. 842 acres

1:10,237
 Projection: Alaska Albers NAD 83
 Perimeter updated 7/20/16 1600 hrs



- Structures
- Mile Posts
- Drop Point
- Helispot
- Staging Area
- Uncontrolled Fire Edge
- Completed Dozer Line
- Completed Line
- Contingency Line
- TFR
- Area Closure
- Major Highways
- Railroad
- RS2477
- Trails
- Electrical Lines
- Secondary/4WD Road/Trail
- Local Road
- Native Allotments



61°20'N
61°20'N
61°20'N
61°20'N

149°45'0"W
149°45'0"W
149°45'0"W
149°45'0"W

149°40'0"W
149°40'0"W
149°40'0"W
149°40'0"W

61°20'N
61°20'N
61°20'N
61°20'N