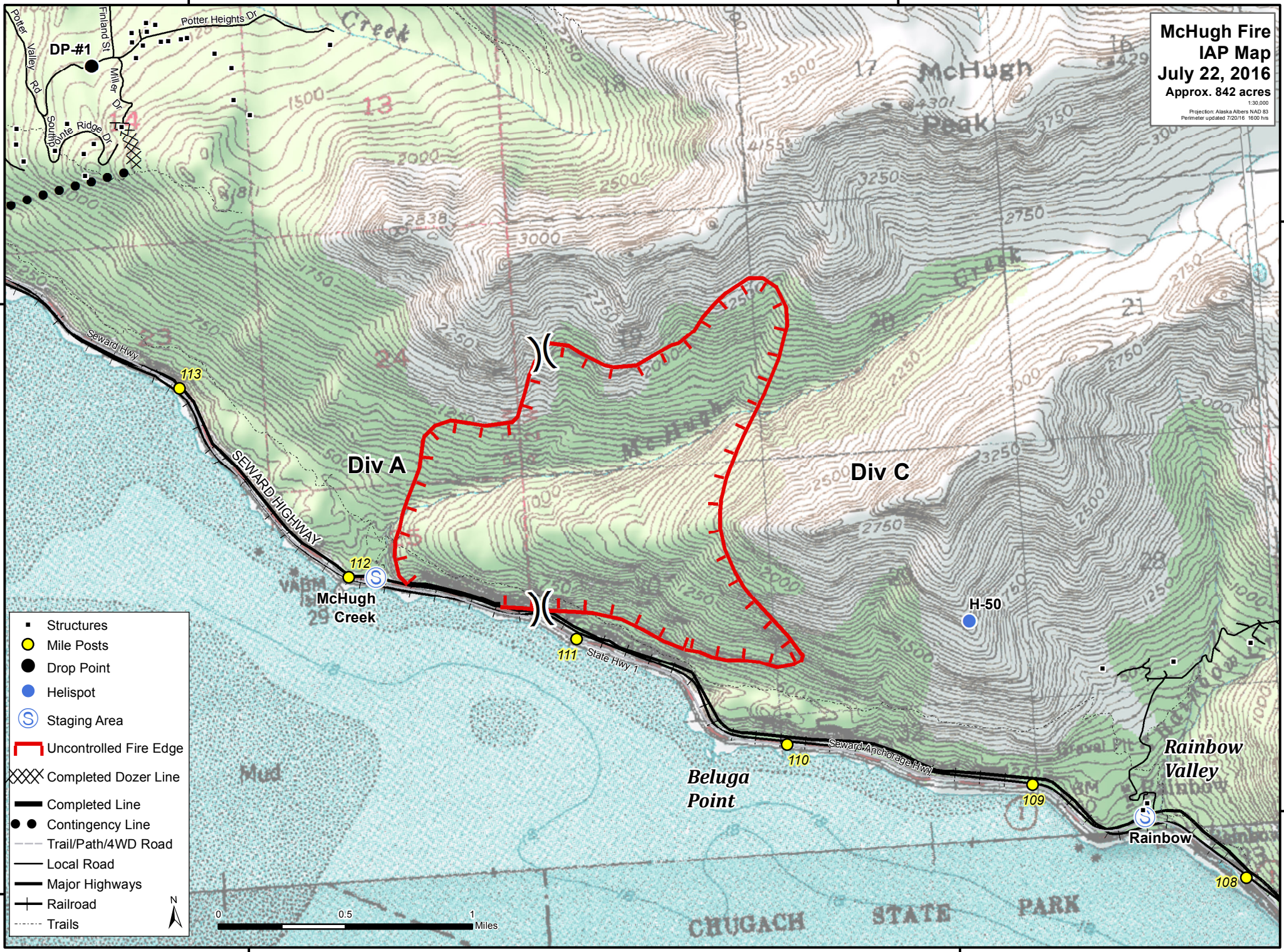


149°45'0"W

149°40'0"W

McHugh Fire
IAP Map
July 22, 2016
 Approx. 842 acres

1:30,000
 Projection: Alaska Albers NAD 83
 Perimeter updated 7/20/16 1600 hrs



61°20'N

61°20'N

61°00'N

61°00'N

149°45'0"W

149°40'0"W

- Structures
- Mile Posts
- Drop Point
- Helispot
- Ⓢ Staging Area
- Uncontrolled Fire Edge
- ⊗ Completed Dozer Line
- Completed Line
- Contingency Line
- Trail/Path/4WD Road
- Local Road
- Major Highways
- Railroad
- Trails

