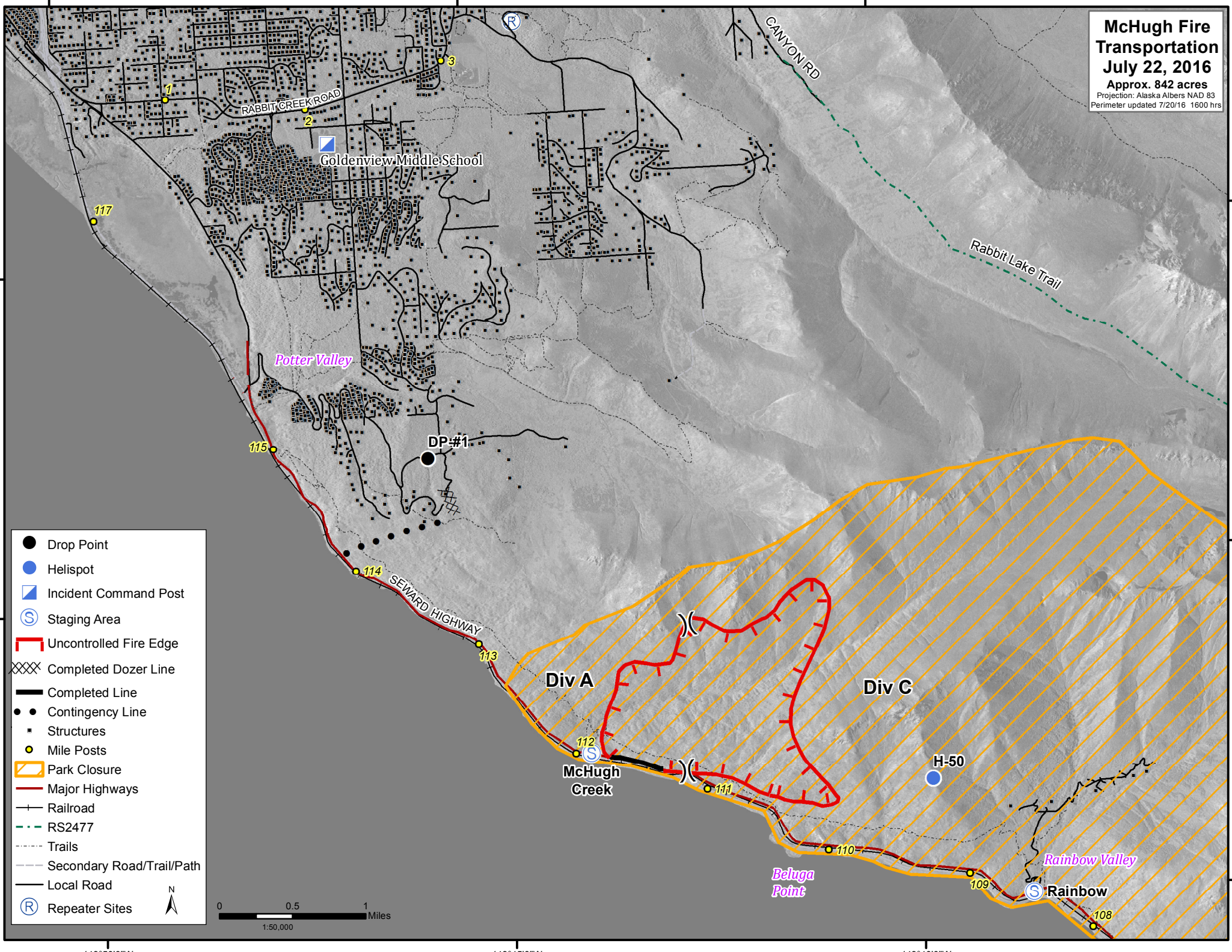
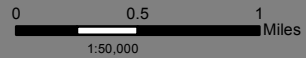


**McHugh Fire  
Transportation  
July 22, 2016**  
Approx. 842 acres  
Projection: Alaska Albers NAD 83  
Perimeter updated 7/20/16 1600 hrs



- Drop Point
- Helispot
- ▣ Incident Command Post
- ⊙ Staging Area
- ▬ Uncontrolled Fire Edge
- ▨ Completed Dozer Line
- ▬ Completed Line
- Contingency Line
- ▣ Structures
- Mile Posts
- ▨ Park Closure
- ▬ Major Highways
- ▬ Railroad
- ▬ RS2477
- ▬ Trails
- ▬ Secondary Road/Trail/Path
- ▬ Local Road
- Ⓡ Repeater Sites



149°50'0"W      149°45'0"W      149°40'0"W      149°35'0"W

61°20'0"N  
61°25'0"N  
61°30'0"N  
61°35'0"N  
61°40'0"N

61°20'0"N  
61°25'0"N  
61°30'0"N  
61°35'0"N  
61°40'0"N