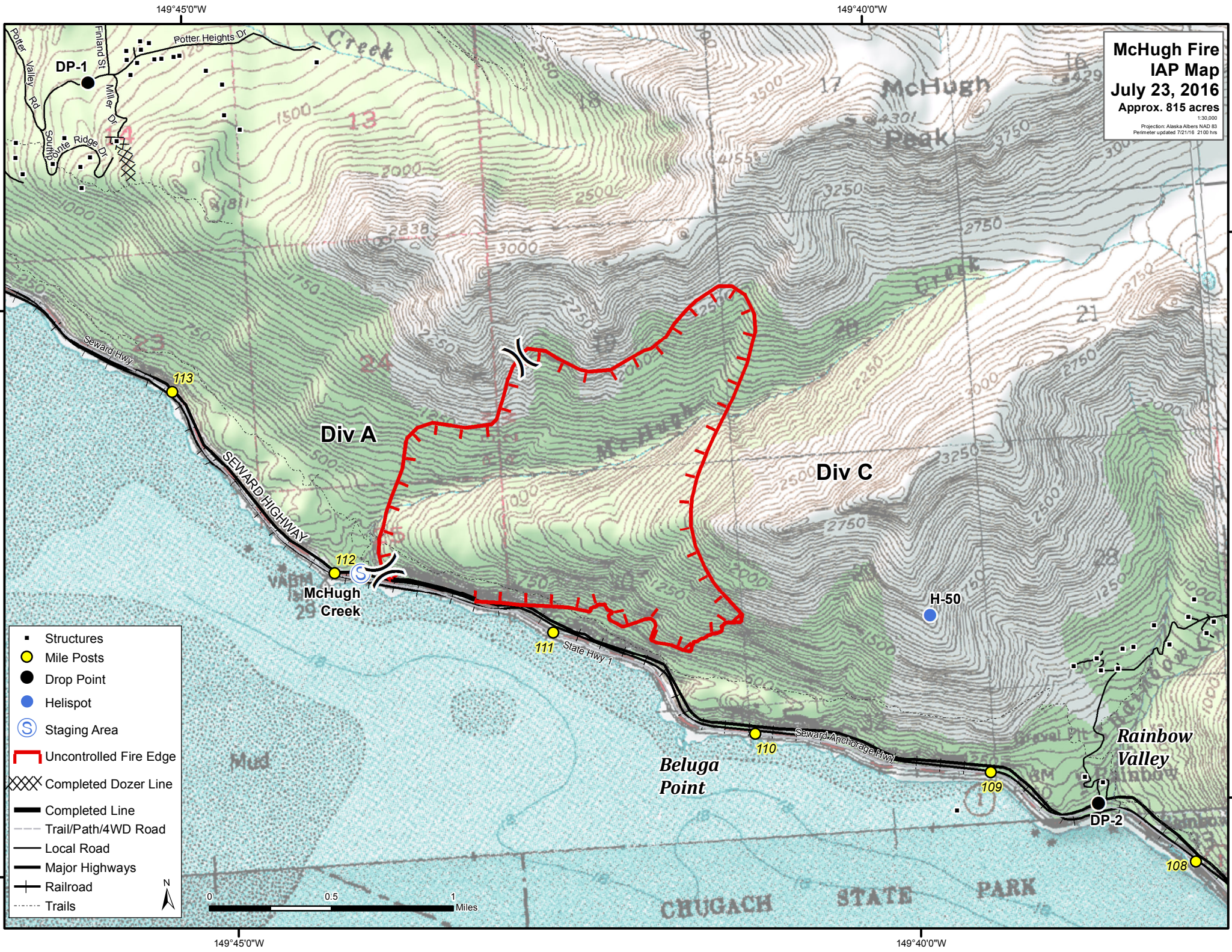


**McHugh Fire
IAP Map
July 23, 2016**

Approx. 815 acres

1:30,000
Projection: Alaska Albers NAD 83
Perimeter updated 7/21/16 2100 hrs



- Structures
- Mile Posts
- Drop Point
- Helispot
- Ⓢ Staging Area
- ▬ Uncontrolled Fire Edge
- ▨ Completed Dozer Line
- ▬ Completed Line
- ▬ Trail/Path/4WD Road
- ▬ Local Road
- ▬ Major Highways
- ▬ Railroad
- ▬ Trails



149°45'0"W

149°40'0"W

149°45'0"W

149°40'0"W

61°20'0"N

61°20'0"N

61°00'0"N

61°00'0"N