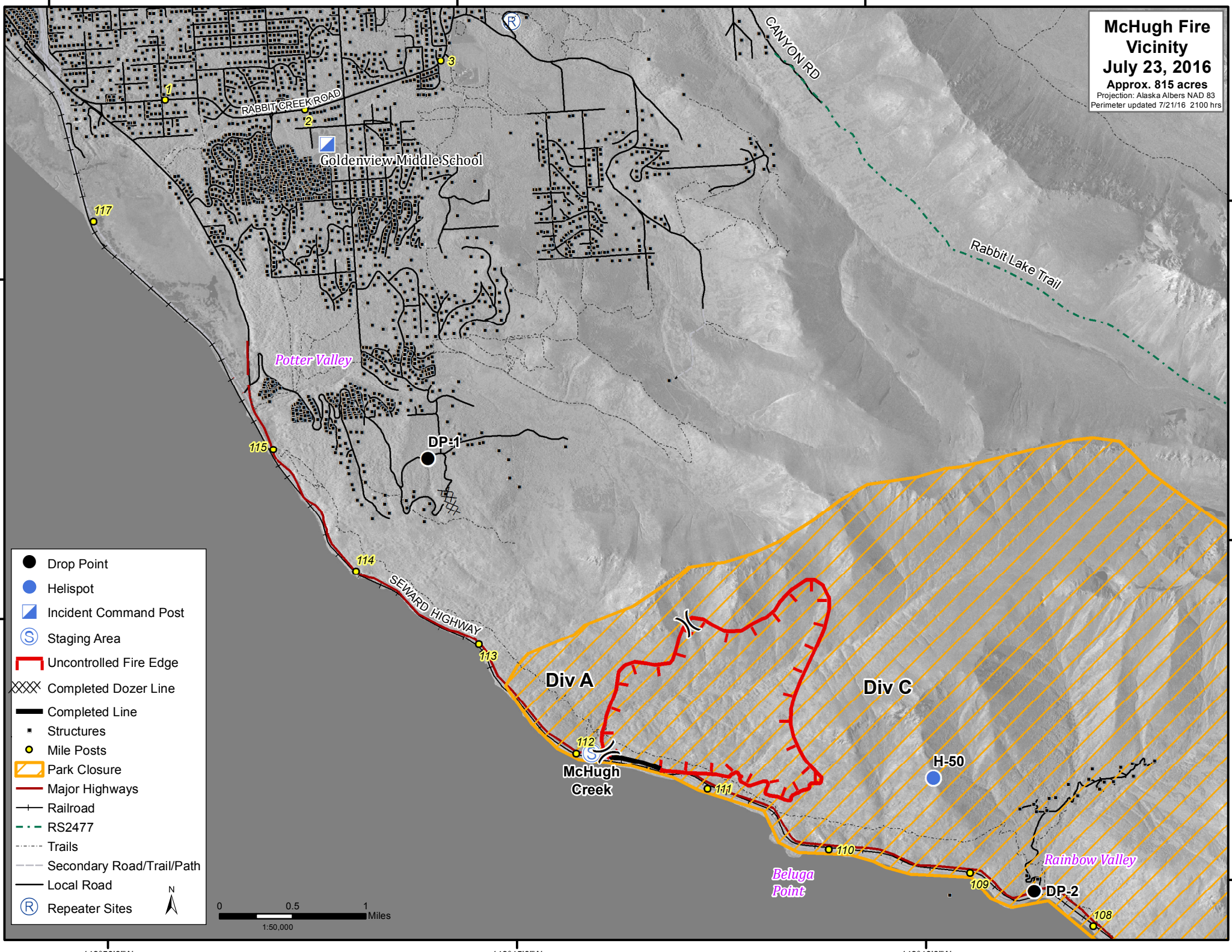
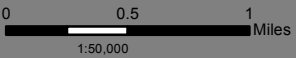


**McHugh Fire
Vicinity
July 23, 2016**
Approx. 815 acres
Projection: Alaska Albers NAD 83
Perimeter updated 7/21/16 2100 hrs



- Drop Point
- Helispot
- ▣ Incident Command Post
- Ⓢ Staging Area
- ▬ Uncontrolled Fire Edge
- ▨ Completed Dozer Line
- ▬ Completed Line
- ▣ Structures
- Mile Posts
- ▨ Park Closure
- ▬ Major Highways
- ▬ Railroad
- ▬ RS2477
- ▬ Trails
- ▬ Secondary Road/Trail/Path
- ▬ Local Road
- Ⓡ Repeater Sites



149°50'0"W 149°45'0"W 149°40'0"W
61°40'0"N 61°20'0"N 61°0'0"N