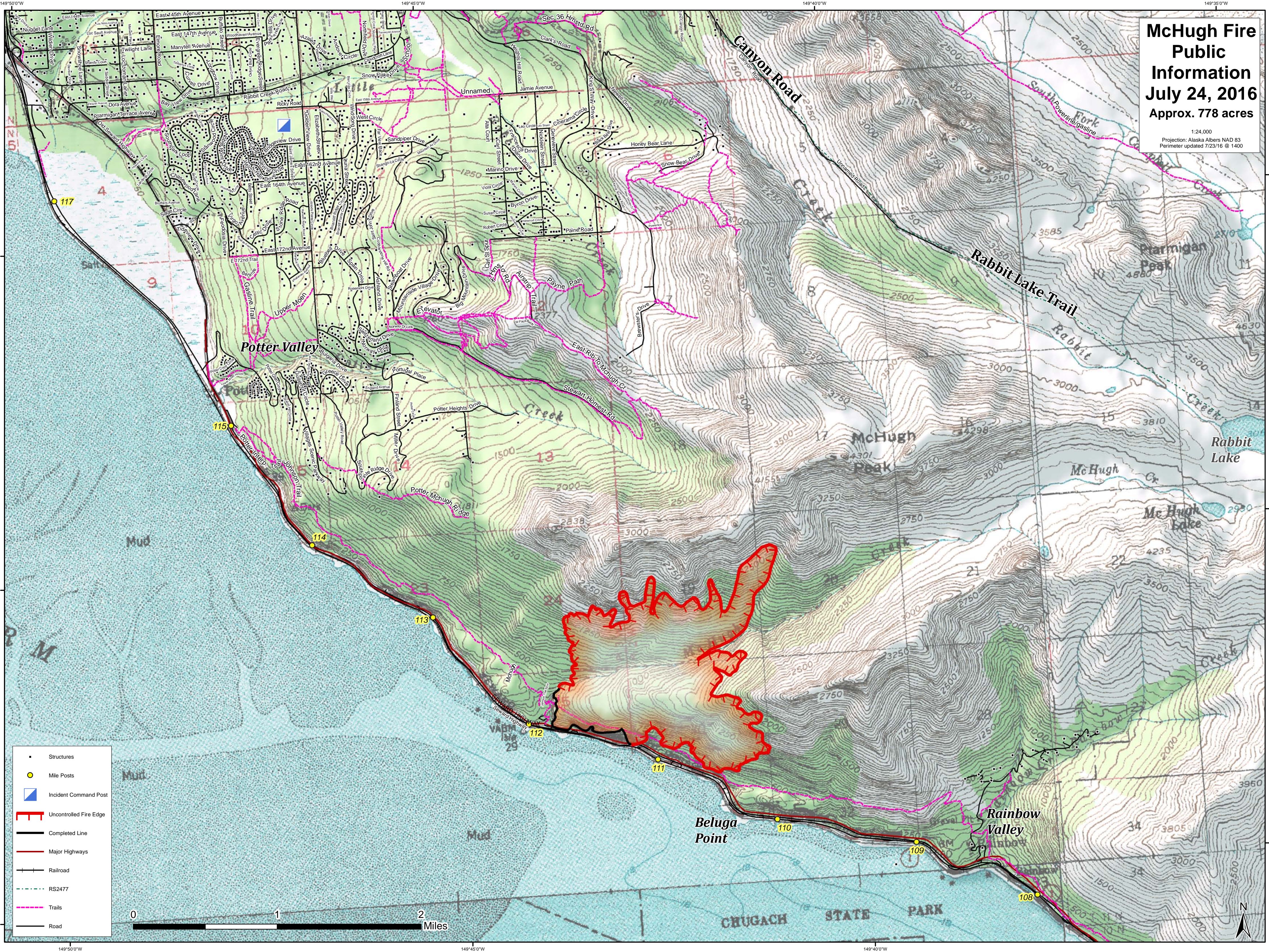


# McHugh Fire Public Information July 24, 2016 Approx. 778 acres

1:24,000  
Projection: Alaska Albers NAD 83  
Perimeter updated 7/23/16 @ 1400



- Structures
- Mile Posts
- Incident Command Post
- Uncontrolled Fire Edge
- Completed Line
- Major Highways
- Railroad
- RS2477
- Trails
- Road



149°50'0"W  
61°20'N

149°45'0"W

149°40'0"W

149°35'0"W

149°50'0"W

149°45'0"W

149°40'0"W

149°35'0"W