

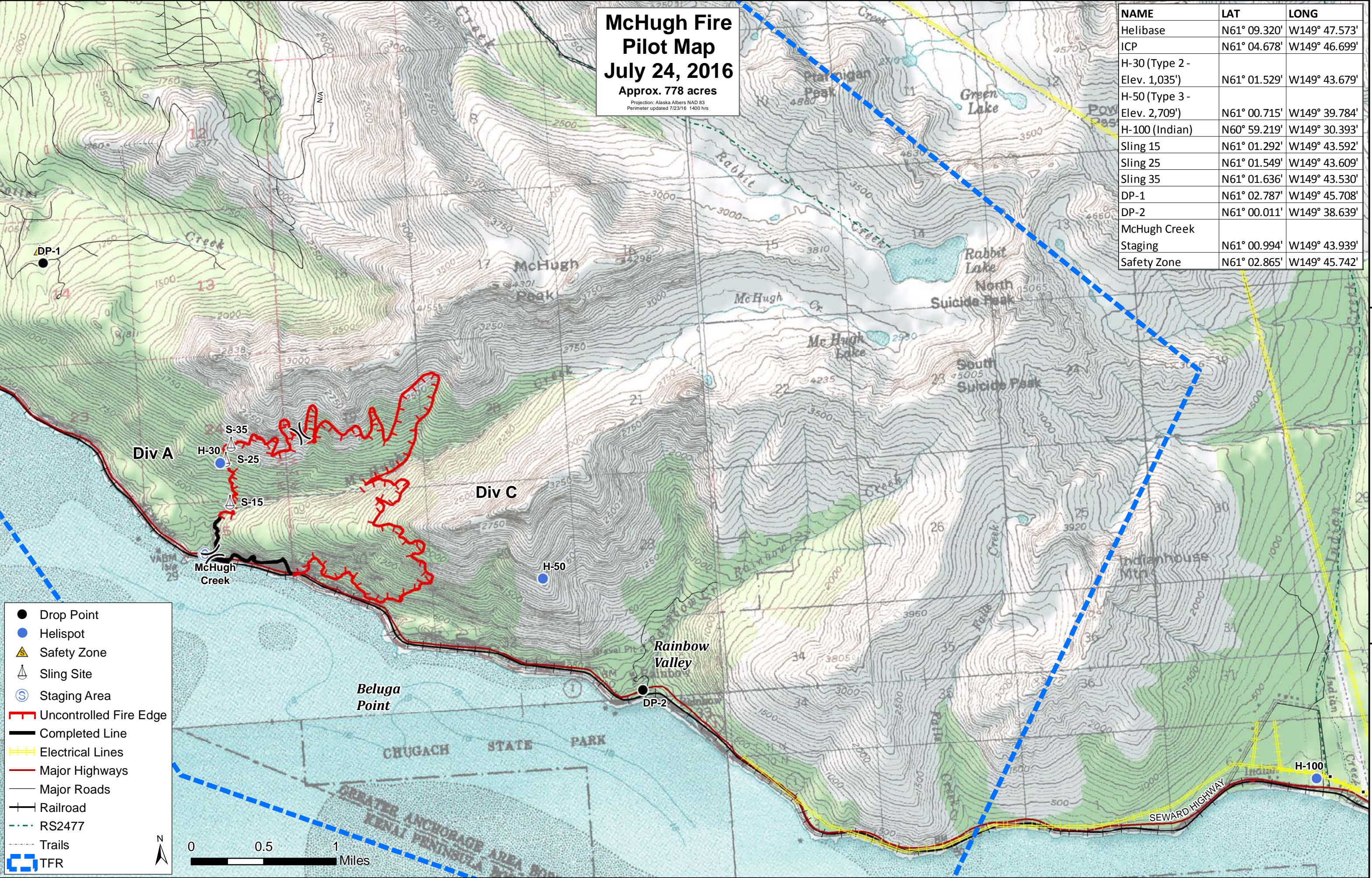
# McHugh Fire Pilot Map

## July 24, 2016

Approx. 778 acres

Projection: Alaska Albers NAD 83  
Perimeter updated 7/23/16 1400 hrs

NAME	LAT	LONG
Helibase	N61° 09.320'	W149° 47.573'
ICP	N61° 04.678'	W149° 46.699'
H-30 (Type 2 - Elev. 1,035')	N61° 01.529'	W149° 43.679'
H-50 (Type 3 - Elev. 2,709')	N61° 00.715'	W149° 39.784'
H-100 (Indian)	N60° 59.219'	W149° 30.393'
Sling 15	N61° 01.292'	W149° 43.592'
Sling 25	N61° 01.549'	W149° 43.609'
Sling 35	N61° 01.636'	W149° 43.530'
DP-1	N61° 02.787'	W149° 45.708'
DP-2	N61° 00.011'	W149° 38.639'
McHugh Creek	N61° 00.994'	W149° 43.939'
Staging	N61° 02.865'	W149° 45.742'
Safety Zone	N61° 02.865'	W149° 45.742'



- Drop Point
- Helispot
- ▲ Safety Zone
- ▲ Sling Site
- ⊙ Staging Area
- Uncontrolled Fire Edge
- Completed Line
- Electrical Lines
- Major Highways
- Major Roads
- Railroad
- RS2477
- Trails
- TFR



Map coordinates: 149°45'0"W, 149°40'0"W, 149°35'0"W, 149°30'0"W (Longitude); 61°40'0"N, 61°20'0"N, 61°00'0"N (Latitude)