

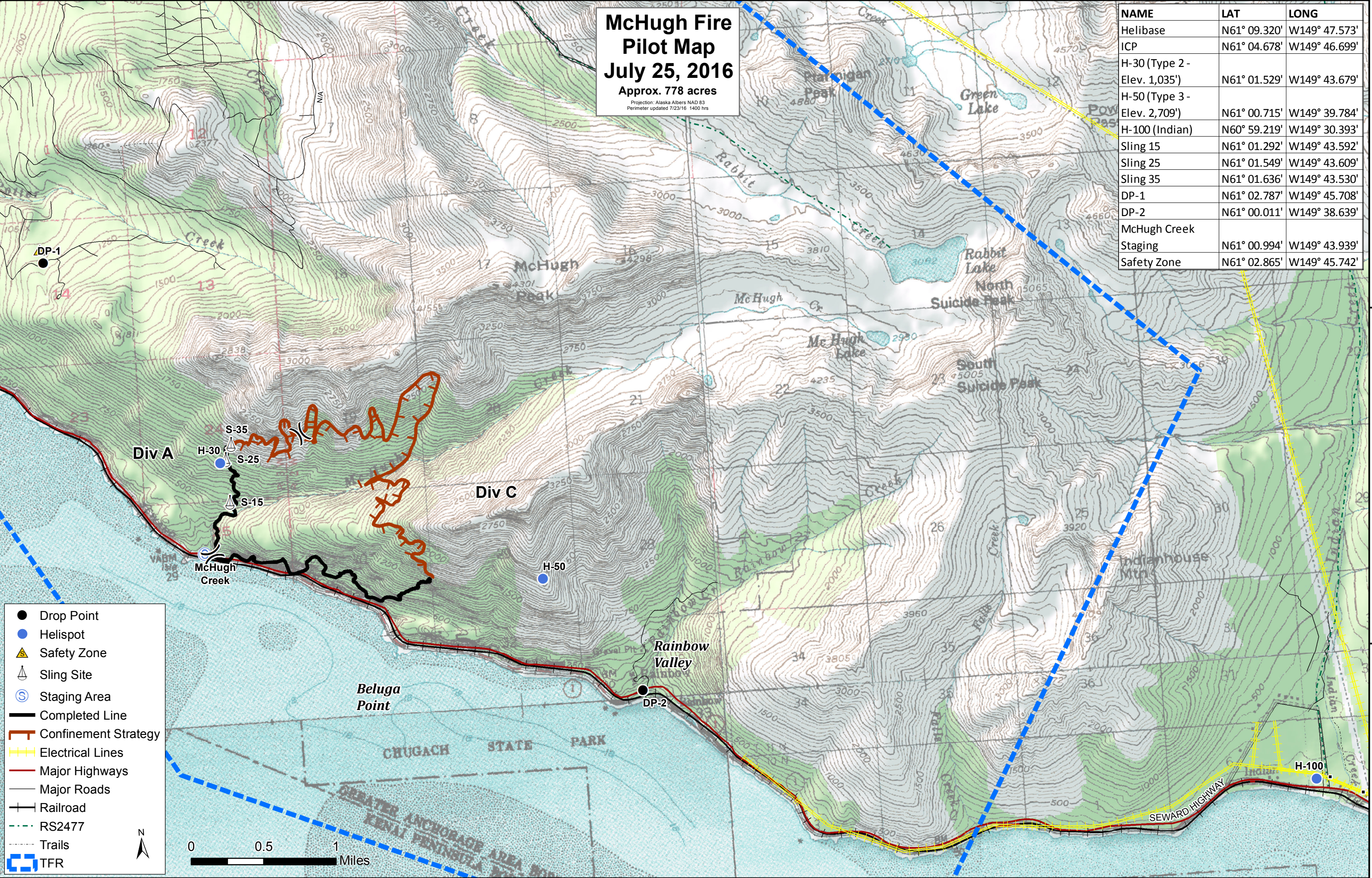
McHugh Fire Pilot Map

July 25, 2016

Approx. 778 acres

Projection: Alaska Albers NAD 83
Perimeter updated 7/23/16 1400 hrs

| NAME | LAT | LONG |
|------------------------------|--------------|---------------|
| Helibase | N61° 09.320' | W149° 47.573' |
| ICP | N61° 04.678' | W149° 46.699' |
| H-30 (Type 2 - Elev. 1,035') | N61° 01.529' | W149° 43.679' |
| H-50 (Type 3 - Elev. 2,709') | N61° 00.715' | W149° 39.784' |
| H-100 (Indian) | N60° 59.219' | W149° 30.393' |
| Sling 15 | N61° 01.292' | W149° 43.592' |
| Sling 25 | N61° 01.549' | W149° 43.609' |
| Sling 35 | N61° 01.636' | W149° 43.530' |
| DP-1 | N61° 02.787' | W149° 45.708' |
| DP-2 | N61° 00.011' | W149° 38.639' |
| McHugh Creek | N61° 00.994' | W149° 43.939' |
| Staging | N61° 00.994' | W149° 43.939' |
| Safety Zone | N61° 02.865' | W149° 45.742' |



- Drop Point
- Helispot
- ▲ Safety Zone
- ▲ Sling Site
- ⊙ Staging Area
- Completed Line
- Confinement Strategy
- Electrical Lines
- Major Highways
- Major Roads
- Railroad
- RS2477
- Trails
- TFR

