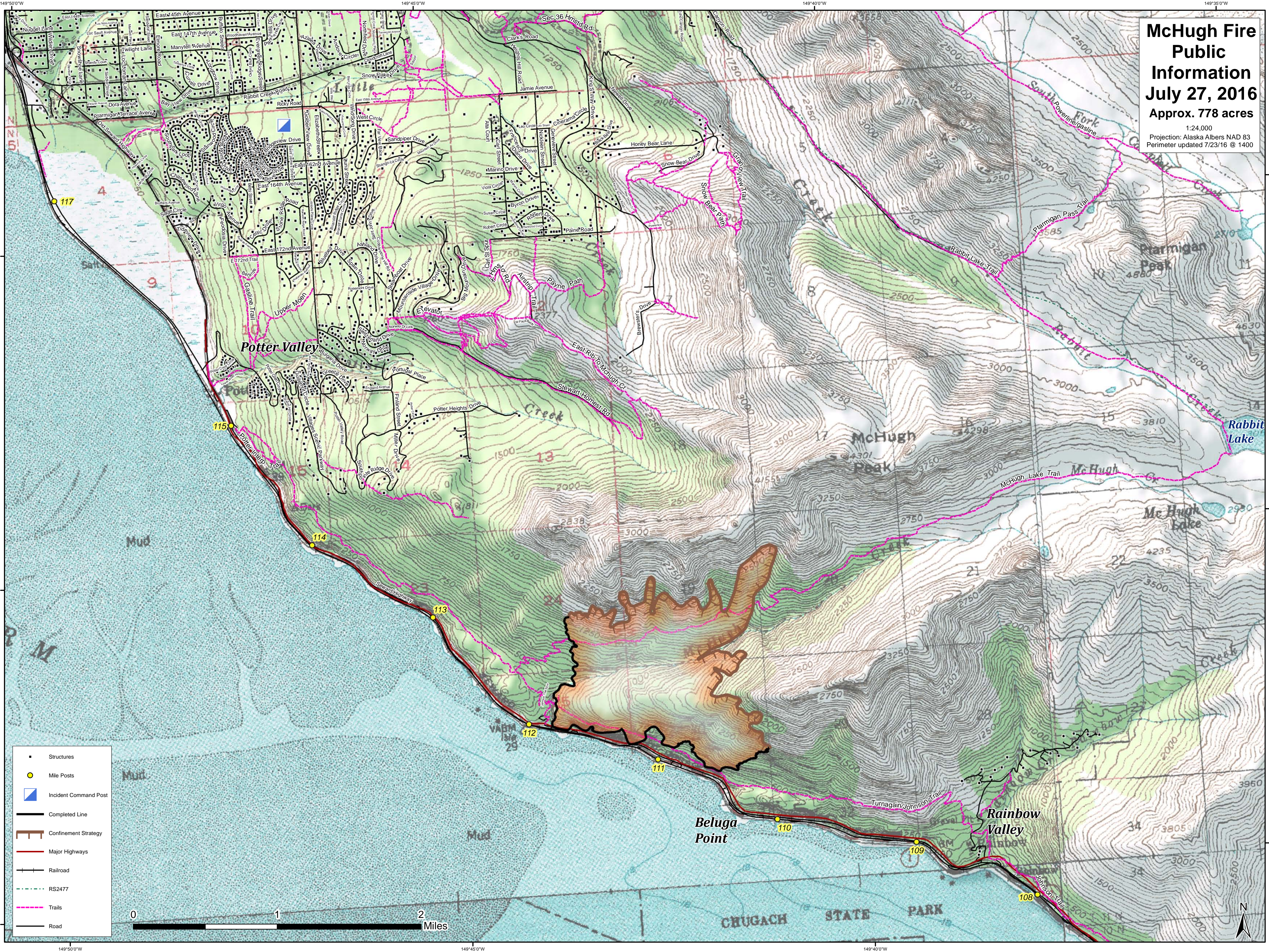


# McHugh Fire Public Information July 27, 2016 Approx. 778 acres

1:24,000  
Projection: Alaska Albers NAD 83  
Perimeter updated 7/23/16 @ 1400



- Structures
- Mile Posts
- Incident Command Post
- Completed Line
- Confinement Strategy
- Major Highways
- Railroad
- RS2477
- Trails
- Road



61°50'0"N  
61°45'0"N  
61°40'0"N  
61°35'0"N

149°50'0"W  
149°45'0"W  
149°40'0"W  
149°35'0"W

149°50'0"W  
149°45'0"W  
149°40'0"W  
149°35'0"W

61°50'0"N  
61°45'0"N  
61°40'0"N  
61°35'0"N

149°50'0"W  
149°45'0"W  
149°40'0"W  
149°35'0"W