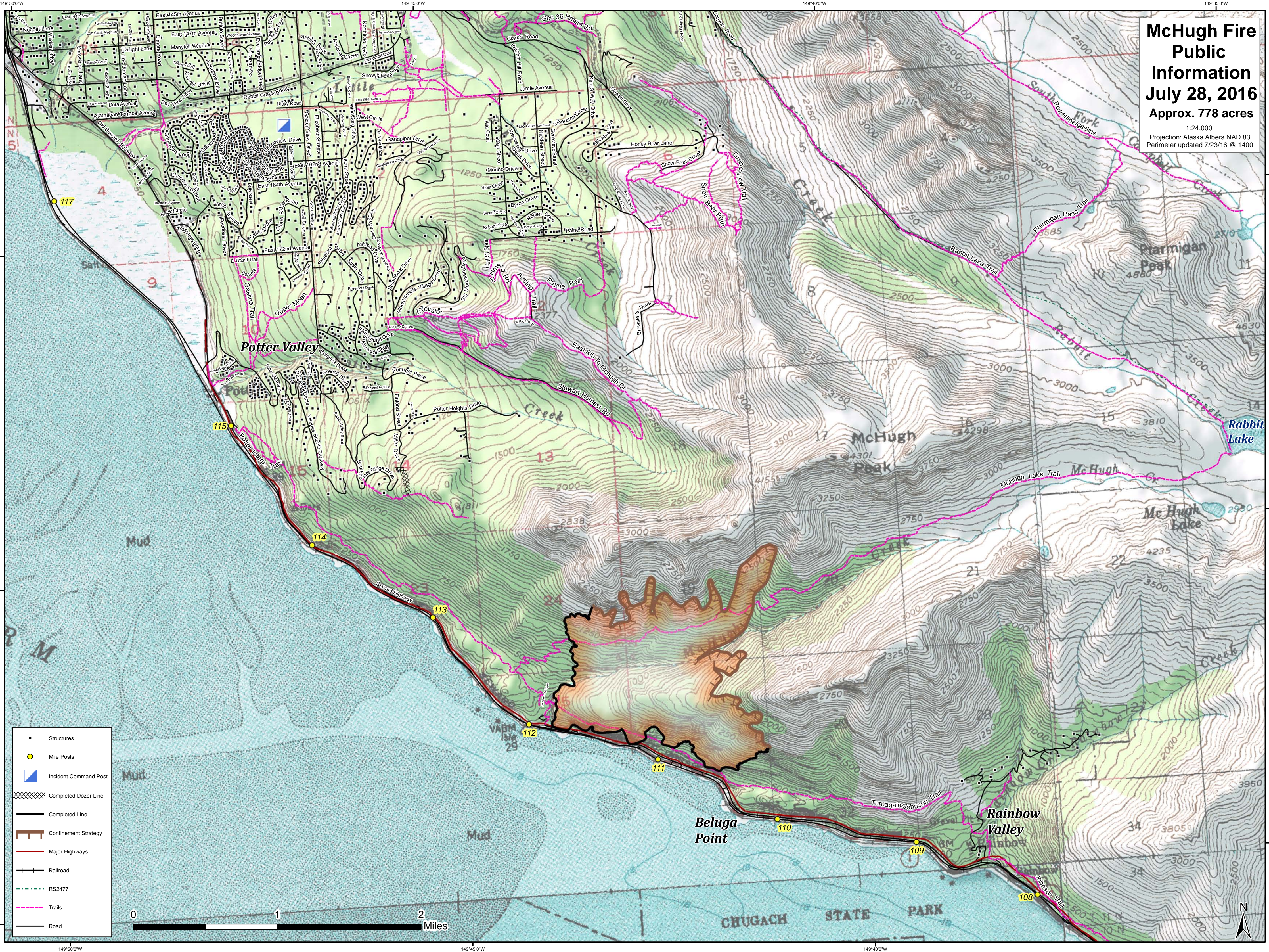


McHugh Fire Public Information July 28, 2016 Approx. 778 acres

1:24,000
Projection: Alaska Albers NAD 83
Perimeter updated 7/23/16 @ 1400



- Structures
- Mile Posts
- Incident Command Post
- Completed Dozer Line
- Completed Line
- Confinement Strategy
- Major Highways
- Railroad
- RS2477
- Trails
- Road



149°50'0"W 149°45'0"W 149°40'0"W 61°20'0"N 61°15'0"N 61°10'0"N 61°05'0"N