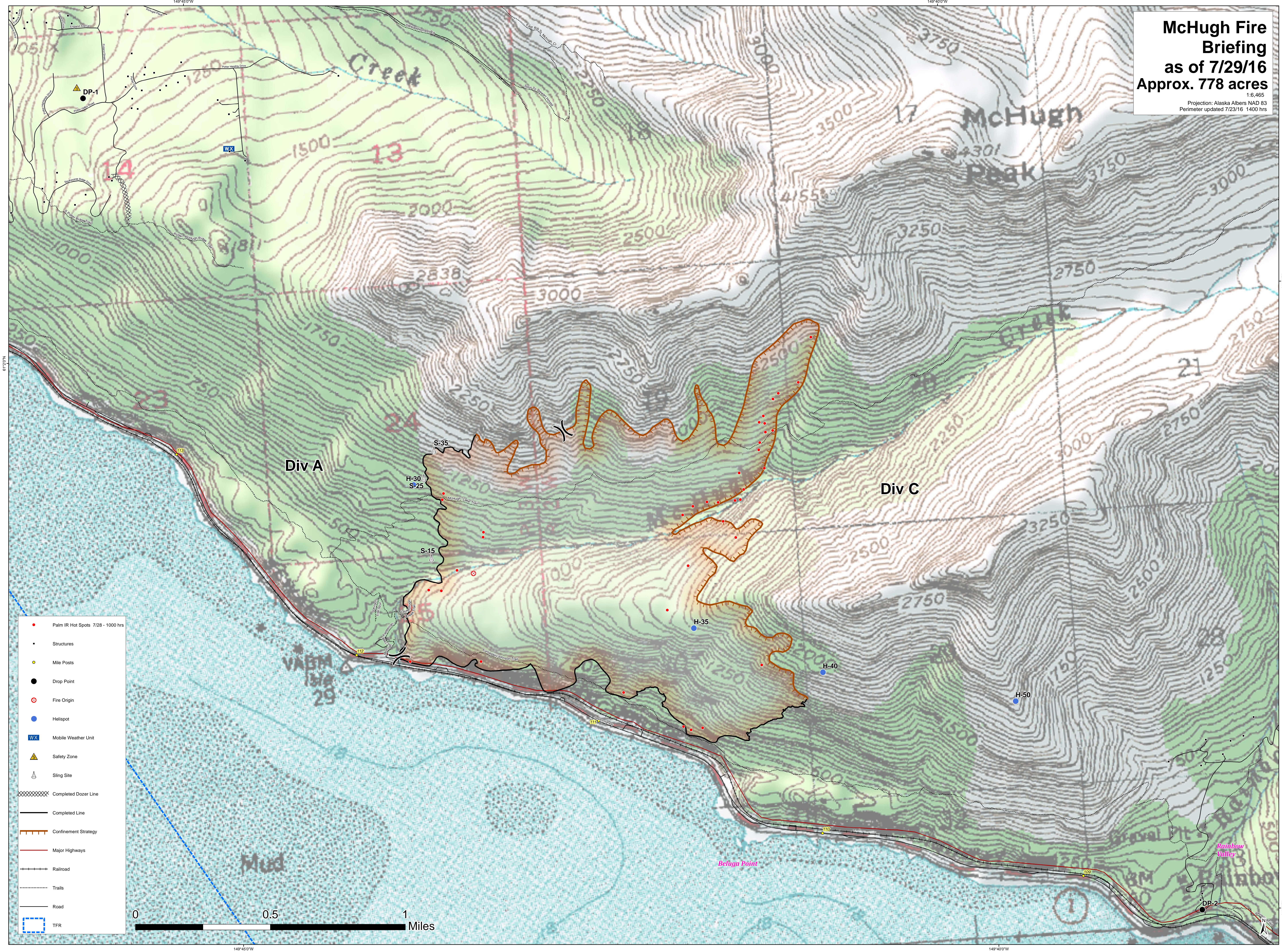


McHugh Fire Briefing as of 7/29/16 Approx. 778 acres

1:6,465
Projection: Alaska Albers NAD 83
Perimeter updated 7/23/16 1400 hrs



- Palm IR Hot Spots 7/28 - 1000 hrs
- Structures
- Mile Posts
- Drop Point
- Fire Origin
- Helispot
- WX Mobile Weather Unit
- ▲ Safety Zone
- ▲ Sling Site
- Completed Dozer Line
- Completed Line
- Confinement Strategy
- Major Highways
- Railroad
- Trails
- Road
- TFR

0 0.5 1 Miles