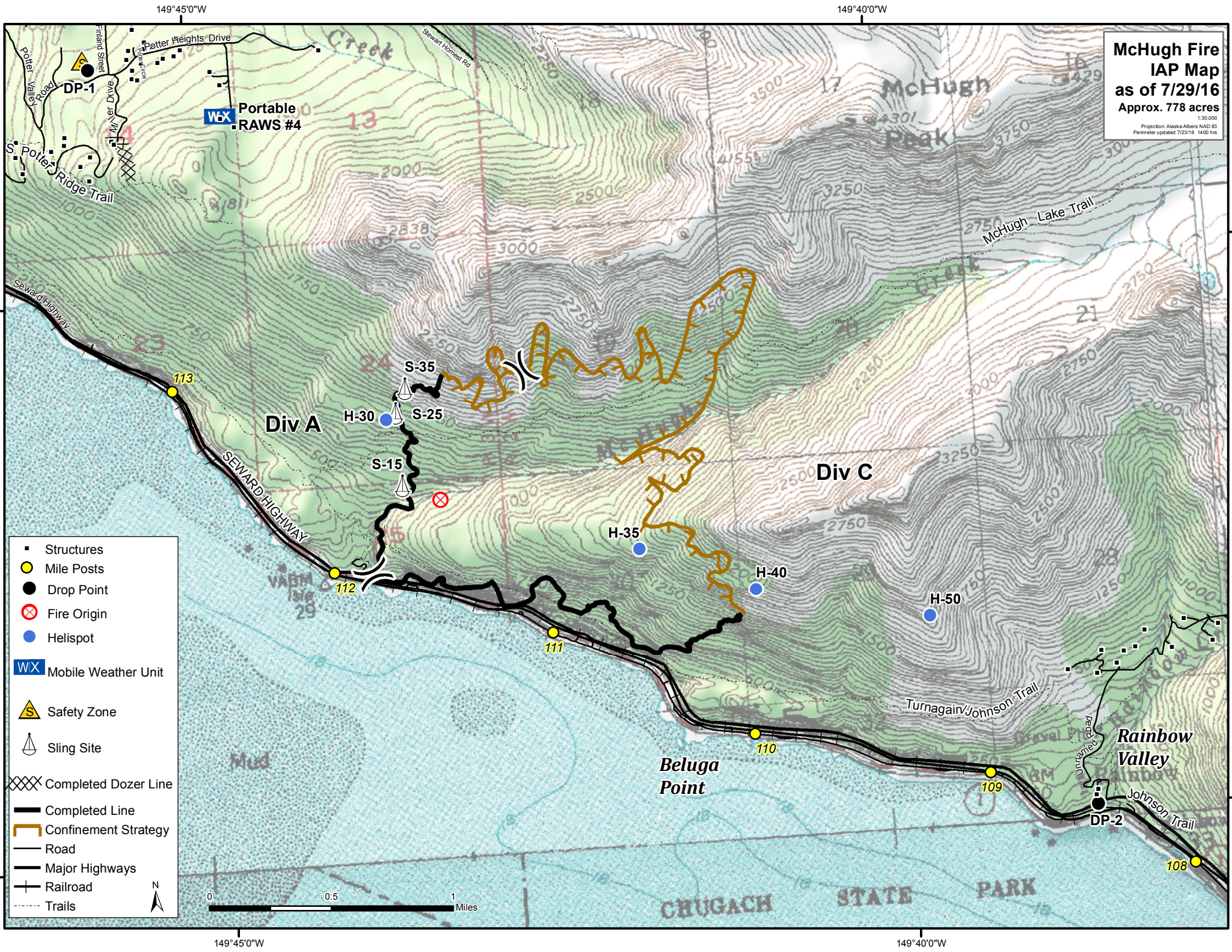
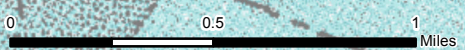


**McHugh Fire
IAP Map
as of 7/29/16**
Approx. 778 acres
1:30,000
Projection: Alaska Albers NAD 83
Perimeter updated 7/23/16 1400 hrs



- Structures
- Mile Posts
- Drop Point
- ⊗ Fire Origin
- Helispot
- WX Mobile Weather Unit
- ⚠ Safety Zone
- ⚓ Sling Site
- XXXX Completed Dozer Line
- Completed Line
- Confinement Strategy
- Road
- Major Highways
- Railroad
- Trails



149°45'0"W

149°40'0"W

149°45'0"W

149°40'0"W

61°20'N

61°20'N

61°00'N

61°00'N