

# Chalkyitsik Complex AK-UYD-000466 Aviation



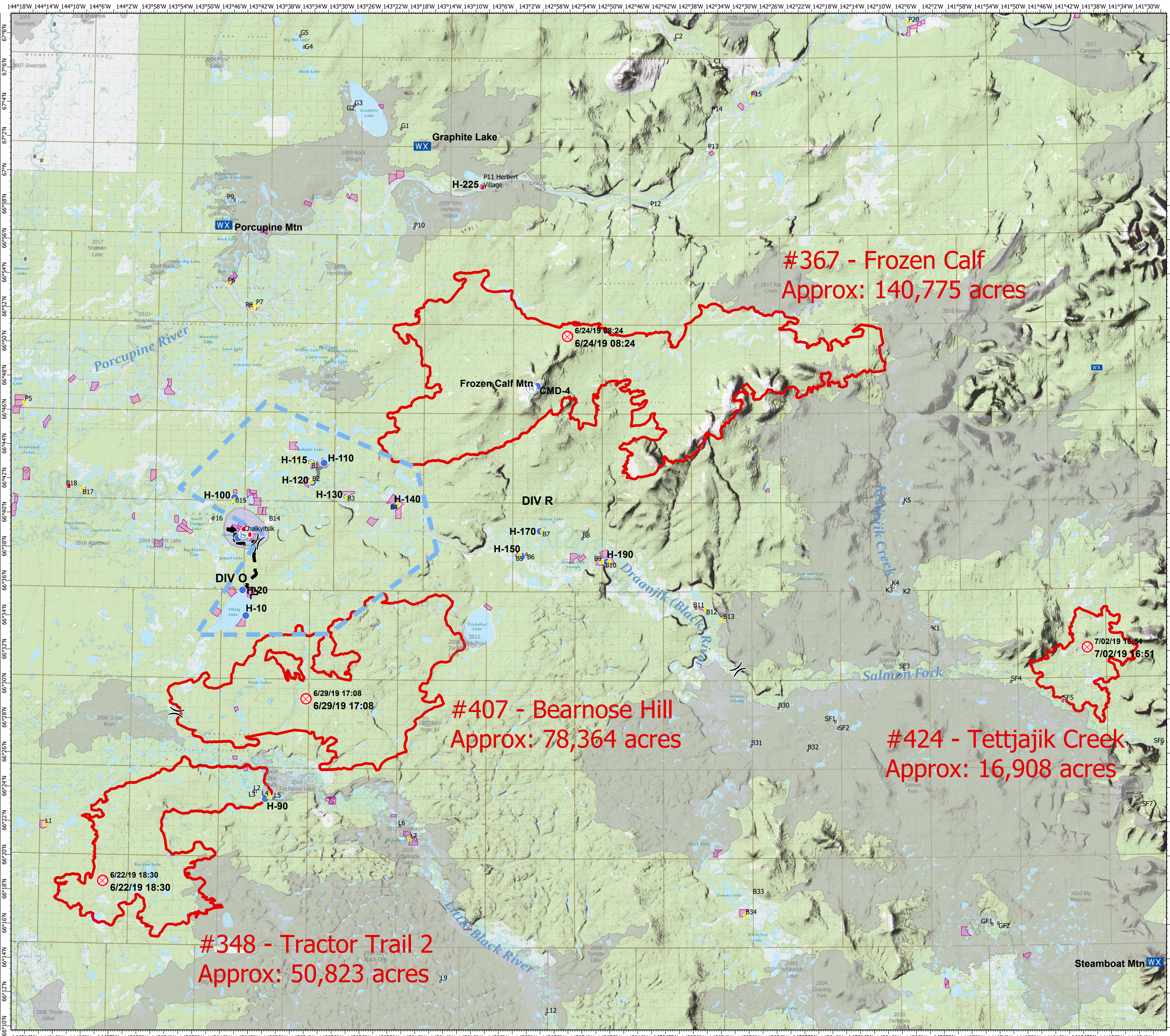
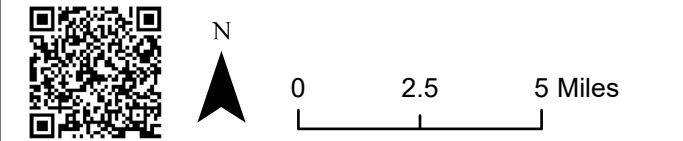
7/16/2019

Alaska Albers Projection  
NAD 83 Datum

- Fire Origin
- Helispot
- Mobile Weather Unit
- Repeater
- Staging Area
- Division Break
- Uncontrolled Fire Edge
- Completed Hand Line
- Completed Dozer Line
- Temporary Flight Restriction
- Native Allotments
- Structure Protection Area
- Fire History
- Alaska Known Sites Structures**
- Critical
- Full
- No Protection
- Unknown
- Camp**
- No Protection
- Unknown
- RAWS

Name	Latitude	Longitude
H-10	66 34.205	-143 43.069
H-20	66 35.700	-143 43.585
H-90	66 23.526	-143 39.879
H-100	66 41.088	-143 44.933
H-110	66 43.170	-143 31.908
H-115	66 43.194	-143 33.765
H-120	66 42.027	-143 33.550
H-130	66 41.208	-143 28.527
H-140	66 40.678	-143 21.610
H-150	66 37.819	-143 2.863
H-170	66 39.267	-143 00.223
H-190	66 37.492	-142 50.475
H-225	66 59.376	-143 8.835
Chalkyitsik Airstrip	66 38.715	-143 44.354
Frozen Calf Mtn	66 47.74	-143 00.68

Little Black RAWS	66 05.484	-143 22.032
Graphite Lake RAWS	67 01.734	-143 17.874
Chalkyitsik RAWS	66 35.706	-144 20.826
Steamboat Mountain RAWS	66 13.83	-141 31.59
Porcupine Mountain RAWS	66 56.988	-143 47.088



#367 - Frozen Calf  
Approx: 140,775 acres

#407 - Bearnose Hill  
Approx: 78,364 acres

#424 - Tettjajik Creek  
Approx: 16,908 acres

#348 - Tractor Trail 2  
Approx: 50,823 acres

Steamboat Mtn WX