

Chalkyitsik Complex

AK-UYD-000466

Aviation

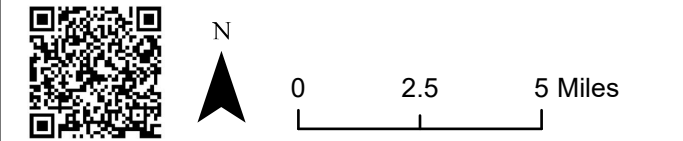


7/19/2019

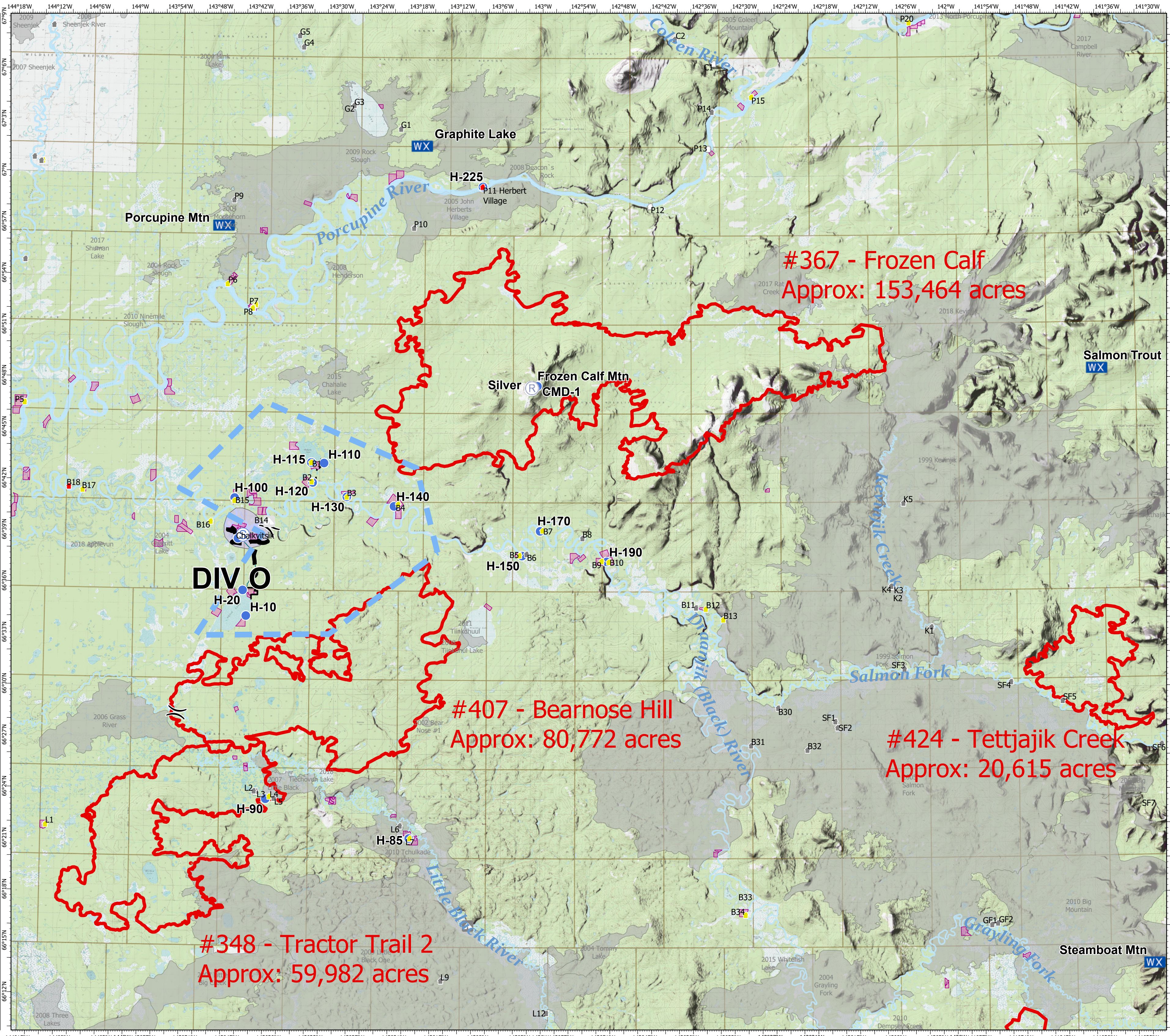
Alaska Albers Projection
NAD 83 Datum

- Helispot
- WX Mobile Weather Unit
- R Repeater
- S Staging Area
-) Division Break
- Uncontrolled Fire Edge
- Completed Hand Line
- Completed Dozer Line
- Temporary Flight Restriction
- Native Allotments
- Structure Protection Area
- Fire History
- Alaska Known Sites**
- Critical
- Full
- No Protection
- Unknown
- Camp**
- ▲ No Protection
- △ Unknown

FeatureCategory	Label	LatWGS84_DDM	LongWGS84_DDM
Division Break		66° 38.540' N	143° 41.444' W
Division Break		66° 28.510' N	143° 52.933' W
Helispot	Chalkyitsik Airstrip	66° 38.720' N	143° 44.357' W
Helispot	Frozen Calf Mtn	66° 47.740' N	143° 00.682' W
Helispot	H-10	66° 34.205' N	143° 43.071' W
Helispot	H-100	66° 41.088' N	143° 44.935' W
Helispot	H-110	66° 43.170' N	143° 31.910' W
Helispot	H-115	66° 43.194' N	143° 33.767' W
Helispot	H-120	66° 42.027' N	143° 33.552' W
Helispot	H-130	66° 41.208' N	143° 28.529' W
Helispot	H-140	66° 40.678' N	143° 21.612' W
Helispot	H-150	66° 37.819' N	143° 02.864' W
Helispot	H-170	66° 39.267' N	143° 00.225' W
Helispot	H-190	66° 37.492' N	142° 50.477' W
Helispot	H-20	66° 35.700' N	143° 43.587' W
Helispot	H-225	66° 59.376' N	143° 08.837' W
Helispot	H-85	66° 21.292' N	143° 19.074' W
Helispot	H-90	66° 23.527' N	143° 39.881' W
Mobile Weather Unit	Graphite Lake	67° 01.734' N	143° 17.874' W
Mobile Weather Unit	Porcupine Mtn	66° 56.988' N	143° 47.088' W
Mobile Weather Unit	Salmon Trout	66° 48.612' N	141° 38.482' W
Mobile Weather Unit	Steamboat Mtn	66° 13.830' N	141° 31.590' W
Repeater	CMD-1	66° 47.618' N	143° 01.538' W
Repeater	Silver	66° 47.615' N	143° 01.495' W
Staging Area		66° 38.931' N	143° 43.654' W



Created on: 7/18/2019 9:00 PM



#367 - Frozen Calf
Approx: 153,464 acres

#407 - Bearnose Hill
Approx: 80,772 acres

#424 - Tettjajik Creek
Approx: 20,615 acres

#348 - Tractor Trail 2
Approx: 59,982 acres

144°15'W 144°9'W 144°3'W 144°W 143°54'W 143°48'W 143°42'W 143°36'W 143°30'W 143°24'W 143°18'W 143°12'W 143°6'W 143°W 142°54'W 142°48'W 142°42'W 142°36'W 142°30'W 142°24'W 142°18'W 142°12'W 142°6'W 142°W 141°54'W 141°48'W 141°42'W 141°36'W 141°30'W