

Chalkyitsik Complex
AK-UYD-000466
Structure Protection



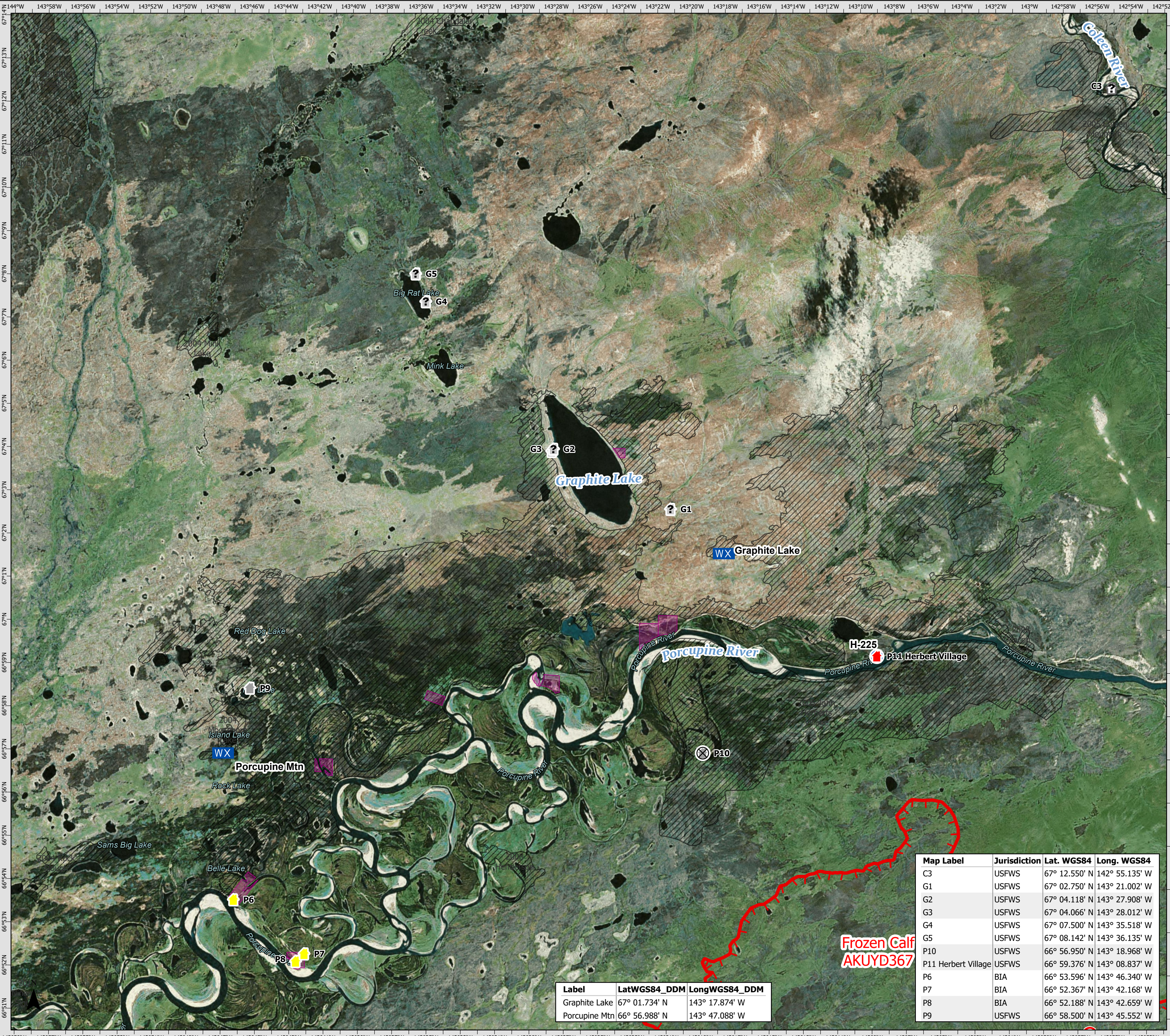
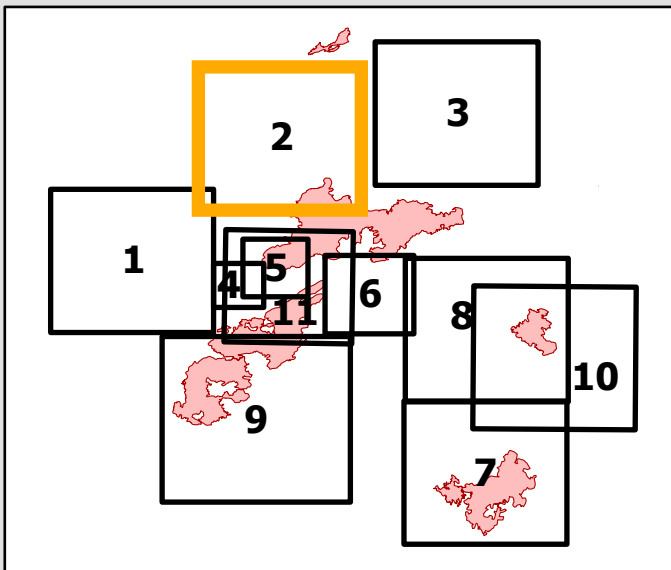
7/20/2019
Page Name: Porcupine and
Herbert's Village
NAD83 Datum **2**

Legend

Known Sites

Protection Level and Site Verification

- Critical (Exists - Verified)
- Full (Exists - Verified)
- No Protection (Exists - Verified)
- Unknown (Exists - Verified)
- Critical (Not Verified)
- Full (Not Verified)
- No Protection (Not Verified)
- Unknown (Not Verified)
- Critical (Not Found - Field Visit)
- Full (Not Found - Field Visit)
- No Protection (Not Found - Field Visit)
- Unknown (Not Found - Field Visit)
- Fire Origin
- Helispot
- Uncontrolled Fire Edge
- Native Allotments
- Structure Protection Area
- Fire History < 20 years old



Label	LatWGS84_DDM	LongWGS84_DDM
Graphite Lake	67° 01.734' N	143° 17.874' W
Porcupine Mtn	66° 56.988' N	143° 47.088' W

Map Label	Jurisdiction	Lat. WGS84	Long. WGS84
C3	USFWS	67° 12.550' N	142° 55.135' W
G1	USFWS	67° 02.750' N	143° 21.002' W
G2	USFWS	67° 04.118' N	143° 27.908' W
G3	USFWS	67° 04.066' N	143° 28.012' W
G4	USFWS	67° 07.500' N	143° 35.518' W
G5	USFWS	67° 08.142' N	143° 36.135' W
P10	USFWS	66° 56.950' N	143° 18.968' W
P11 Herbert Village	USFWS	66° 59.376' N	143° 08.837' W
P6	BIA	66° 53.596' N	143° 46.340' W
P7	BIA	66° 52.367' N	143° 42.168' W
P8	BIA	66° 52.188' N	143° 42.659' W
P9	USFWS	66° 58.500' N	143° 45.552' W

**Frozen Calf
AKUYD367**



0 0.5 1 2 Miles

Map Created: 7/19/2019 20:25