

Chalkyitsik Complex AK-UYD-000466 Aviation

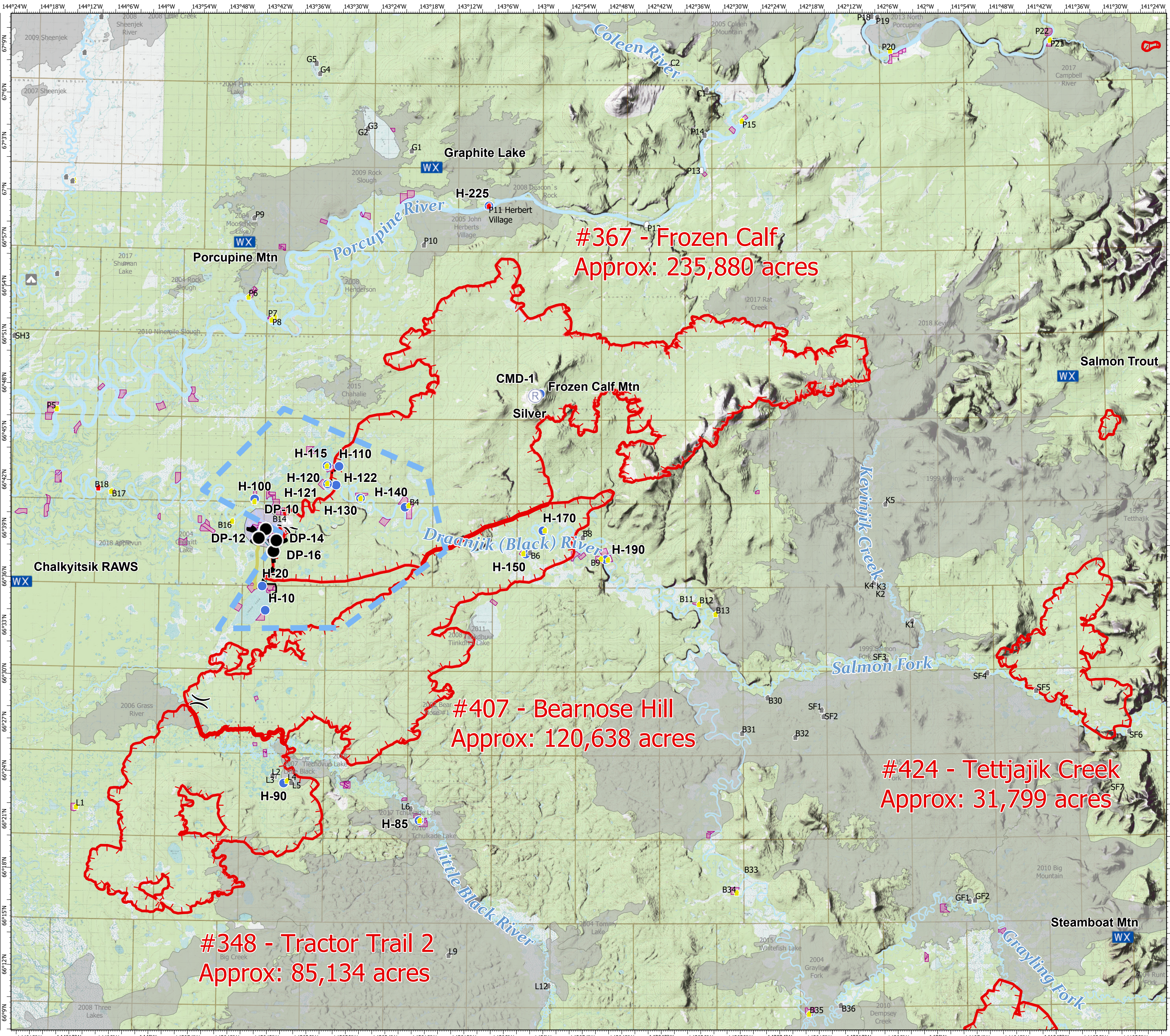


7/23/2019

Alaska Albers Projection
NAD 83 Datum

- Drop Point
- Helispot
- WX Mobile Weather Unit
- R Repeater
- S Staging Area
-) Division Break
- Uncontrolled Fire Edge
- Completed Hand Line
- Access or Improved Road
- Completed Dozer Line
- Temporary Flight Restriction
- Wildfire Daily Fire Perimeter
- Native Allotments
- Structure Protection Area
- Fire History

FeatureCategory	Label	LatWGS84_DDM	LongWGS84_DDM
Division Break		66° 38.540' N	143° 41.444' W
Division Break		66° 28.510' N	143° 52.933' W
Drop Point	DP-10	66° 39.210' N	143° 43.145' W
Drop Point	DP-12	66° 38.673' N	143° 44.220' W
Drop Point	DP-14	66° 38.545' N	143° 41.503' W
Drop Point	DP-16	66° 41.915' N	143° 41.915' W
Helispot	Chalkyitsik Airstrip	66° 38.720' N	143° 44.357' W
Helispot	Frozen Calf Mtn	66° 47.740' N	143° 00.682' W
Helispot	H-10	66° 34.205' N	143° 43.071' W
Helispot	H-100	66° 41.088' N	143° 44.935' W
Helispot	H-110	66° 43.170' N	143° 31.910' W
Helispot	H-115	66° 43.194' N	143° 33.767' W
Helispot	H-120	66° 42.027' N	143° 33.552' W
Helispot	H-121	66° 42.072' N	143° 33.666' W
Helispot	H-122	66° 42.005' N	143° 32.350' W
Helispot	H-130	66° 41.208' N	143° 28.529' W
Helispot	H-140	66° 40.678' N	143° 21.612' W
Helispot	H-150	66° 37.819' N	143° 02.864' W
Helispot	H-170	66° 39.267' N	143° 00.225' W
Helispot	H-190	66° 37.492' N	142° 50.477' W
Helispot	H-20	66° 35.700' N	143° 43.587' W
Helispot	H-225	66° 59.376' N	143° 08.837' W
Helispot	H-85	66° 21.292' N	143° 19.074' W
Helispot	H-90	66° 23.527' N	143° 39.881' W
Mobile Weather Unit	Chalkyitsik RAWS	66° 35.706' N	144° 20.826' W
Mobile Weather Unit	Graphite Lake	67° 01.734' N	143° 17.874' W
Mobile Weather Unit	Porcupine Mtn	66° 56.988' N	143° 47.088' W
Mobile Weather Unit	Salmon Trout	66° 48.612' N	141° 38.482' W
Mobile Weather Unit	Steamboat Mtn	66° 13.830' N	141° 31.590' W
Repeater	CMD-1	66° 47.618' N	143° 01.538' W
Repeater	Silver	66° 47.615' N	143° 01.495' W
Staging Area		66° 38.931' N	143° 43.654' W



#367 - Frozen Calf
Approx: 235,880 acres

#407 - Bearnose Hill
Approx: 120,638 acres

#424 - Tettjajik Creek
Approx: 31,799 acres

#348 - Tractor Trail 2
Approx: 85,134 acres