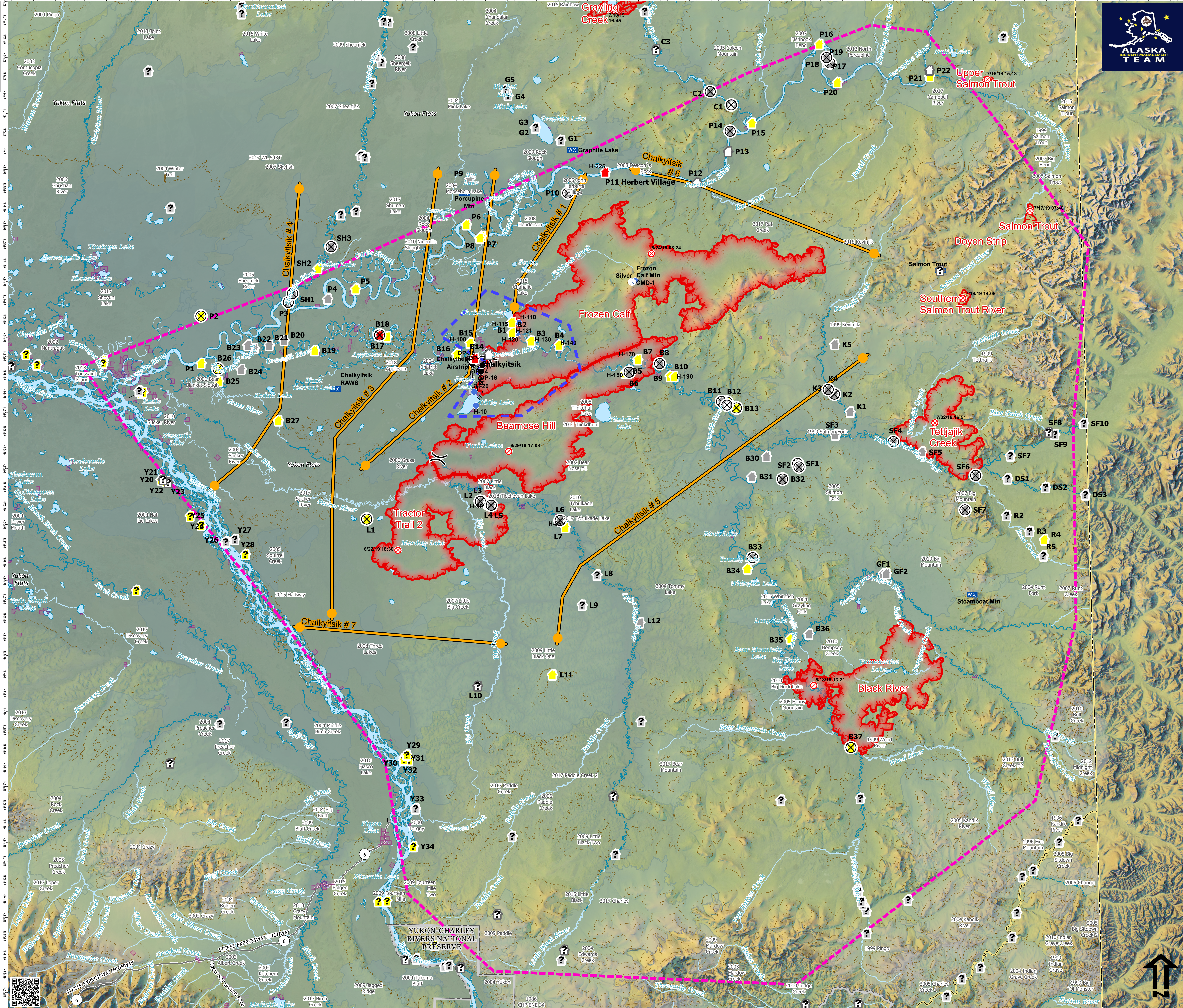


Chalkyitsik Complex AK-UJD-000466 Situation Map

7/24/2019
Alaska Albers Projection
NAD 83 Datum



- Known Sites**
- Protection Level and Site Verification
 - Critical (Exists - Verified)
 - Full (Exists - Verified)
 - No Protection (Exists - Verified)
 - Unknown (Exists - Verified)
 - Critical (Not Verified)
 - Full (Not Verified)
 - No Protection (Not Verified)
 - Unknown (Not Verified)
 - Field Verification
 - Critical (Not Found - Field Visit)
 - Full (Not Found - Field Visit)
 - No Protection (Not Found - Field Visit)
 - Unknown (Not Found - Field Visit)
 - Native Allotments
 - Chalkyitsik Planning Area
- Event Point**
- Drop Point
 - Fire Origin
 - Helispot
 - Mobile Weather Unit
 - Repeater
 - Staging Area
 - Division Break
- Event Line**
- Uncontrolled Fire Edge
 - Completed Dozer Line
 - Completed Hand Line
 - Access or Improved Road
 - Temporary Flight Restriction
 - Management Action Point
- Event Polygon**
- Wildfire Daily Fire Perimeter
 - Fire History < 20 years old



| Map Label | Site Jurisdiction/Incident Comments |
|-----------|-------------------------------------|
| B1 | BIA |
| B10 | USFWS |
| B12 | BIA |
| B13 | USFWS |
| B14 | BIA |
| B16 | BIA |
| B17 | BIA |
| B18 | ANCSCA |
| B19 | BIA |
| B20 | BIA |
| B21 | USFWS |
| B22 | USFWS |
| B23 | USFWS |
| B24 | USFWS |
| B25 | USFWS |
| B26 | BIA |
| B27 | BIA |
| B30 | USFWS |
| B31 | USFWS |
| B32 | USFWS |
| B33 | USFWS |
| B34 | BIA |
| B35 | USFWS |
| B36 | BIA |
| B37 | USFWS |
| C1 | USFWS |
| C2 | USFWS |
| C3 | USFWS |
| D1 | USFWS |
| D2 | USFWS |
| D3 | USFWS |
| D4 | USFWS |
| D5 | USFWS |
| D6 | USFWS |
| D7 | USFWS |
| D8 | USFWS |
| D9 | USFWS |
| D10 | USFWS |
| D11 | USFWS |
| D12 | USFWS |
| D13 | USFWS |
| D14 | USFWS |
| D15 | BIA |
| D16 | USFWS |
| D17 | USFWS |
| D18 | USFWS |
| D19 | USFWS |
| D20 | USFWS |
| D21 | USFWS |
| D22 | USFWS |
| D23 | USFWS |
| D24 | USFWS |
| D25 | USFWS |
| D26 | USFWS |
| D27 | USFWS |
| D28 | USFWS |
| D29 | USFWS |
| D30 | USFWS |
| D31 | USFWS |
| D32 | USFWS |
| D33 | USFWS |
| D34 | USFWS |
| D35 | USFWS |
| D36 | USFWS |
| D37 | USFWS |
| D38 | USFWS |
| D39 | USFWS |
| D40 | USFWS |
| D41 | USFWS |
| D42 | USFWS |
| D43 | USFWS |
| D44 | USFWS |
| D45 | USFWS |
| D46 | USFWS |
| D47 | USFWS |
| D48 | USFWS |
| D49 | USFWS |
| D50 | USFWS |
| D51 | USFWS |
| D52 | USFWS |
| D53 | USFWS |
| D54 | USFWS |
| D55 | USFWS |
| D56 | USFWS |
| D57 | USFWS |
| D58 | USFWS |
| D59 | USFWS |
| D60 | USFWS |
| D61 | USFWS |
| D62 | USFWS |
| D63 | USFWS |
| D64 | USFWS |
| D65 | USFWS |
| D66 | USFWS |
| D67 | USFWS |
| D68 | USFWS |
| D69 | USFWS |
| D70 | USFWS |
| D71 | USFWS |
| D72 | USFWS |
| D73 | USFWS |
| D74 | USFWS |
| D75 | USFWS |
| D76 | USFWS |
| D77 | USFWS |
| D78 | USFWS |
| D79 | USFWS |
| D80 | USFWS |
| D81 | USFWS |
| D82 | USFWS |
| D83 | USFWS |
| D84 | USFWS |
| D85 | USFWS |
| D86 | USFWS |
| D87 | USFWS |
| D88 | USFWS |
| D89 | USFWS |
| D90 | USFWS |
| D91 | USFWS |
| D92 | USFWS |
| D93 | USFWS |
| D94 | USFWS |
| D95 | USFWS |
| D96 | USFWS |
| D97 | USFWS |
| D98 | USFWS |
| D99 | USFWS |
| D100 | USFWS |
| H1 | BIA |
| H2 | BIA |
| H3 | BIA |
| H4 | BIA |
| H5 | BIA |
| H6 | BIA |
| H7 | BIA |
| H8 | BIA |
| H9 | BIA |
| H10 | BIA |
| H11 | BIA |
| H12 | BIA |
| H13 | BIA |
| H14 | BIA |
| H15 | BIA |
| H16 | BIA |
| H17 | BIA |
| H18 | BIA |
| H19 | BIA |
| H20 | BIA |
| P1 | BIA |
| P2 | BIA |
| P3 | BIA |
| P4 | BIA |
| P5 | BIA |
| P6 | BIA |
| P7 | BIA |
| P8 | BIA |
| P9 | BIA |
| P10 | BIA |
| P11 | BIA |
| P12 | BIA |
| P13 | BIA |
| P14 | BIA |
| P15 | BIA |
| P16 | BIA |
| P17 | BIA |
| P18 | BIA |
| P19 | BIA |
| P20 | BIA |
| P21 | BIA |
| P22 | BIA |
| SF1 | BIA |
| SF2 | BIA |
| SF3 | BIA |
| SF4 | BIA |
| SF5 | BIA |
| SF6 | BIA |
| SF7 | BIA |
| SF8 | BIA |
| SF9 | BIA |
| SF10 | BIA |
| Y1 | BIA |
| Y2 | BIA |
| Y3 | BIA |
| Y4 | BIA |
| Y5 | BIA |
| Y6 | BIA |
| Y7 | BIA |
| Y8 | BIA |
| Y9 | BIA |
| Y10 | BIA |
| Y11 | BIA |
| Y12 | BIA |
| Y13 | BIA |
| Y14 | BIA |
| Y15 | BIA |
| Y16 | BIA |
| Y17 | BIA |
| Y18 | BIA |
| Y19 | BIA |
| Y20 | BIA |
| Y21 | BIA |
| Y22 | BIA |
| Y23 | BIA |
| Y24 | BIA |
| Y25 | BIA |
| Y26 | BIA |
| Y27 | BIA |
| Y28 | BIA |
| Y29 | BIA |
| Y30 | BIA |
| Y31 | BIA |
| Y32 | BIA |
| Y33 | BIA |
| Y34 | BIA |