

Chalkyitsik Complex
AK-UYD-000466
Cornucopia Complex
AK-UYD-000899
Structure Protection



8/11/2019

Page Name: Porcupine River West

NAD83 Datum

1

Legend

Known Sites

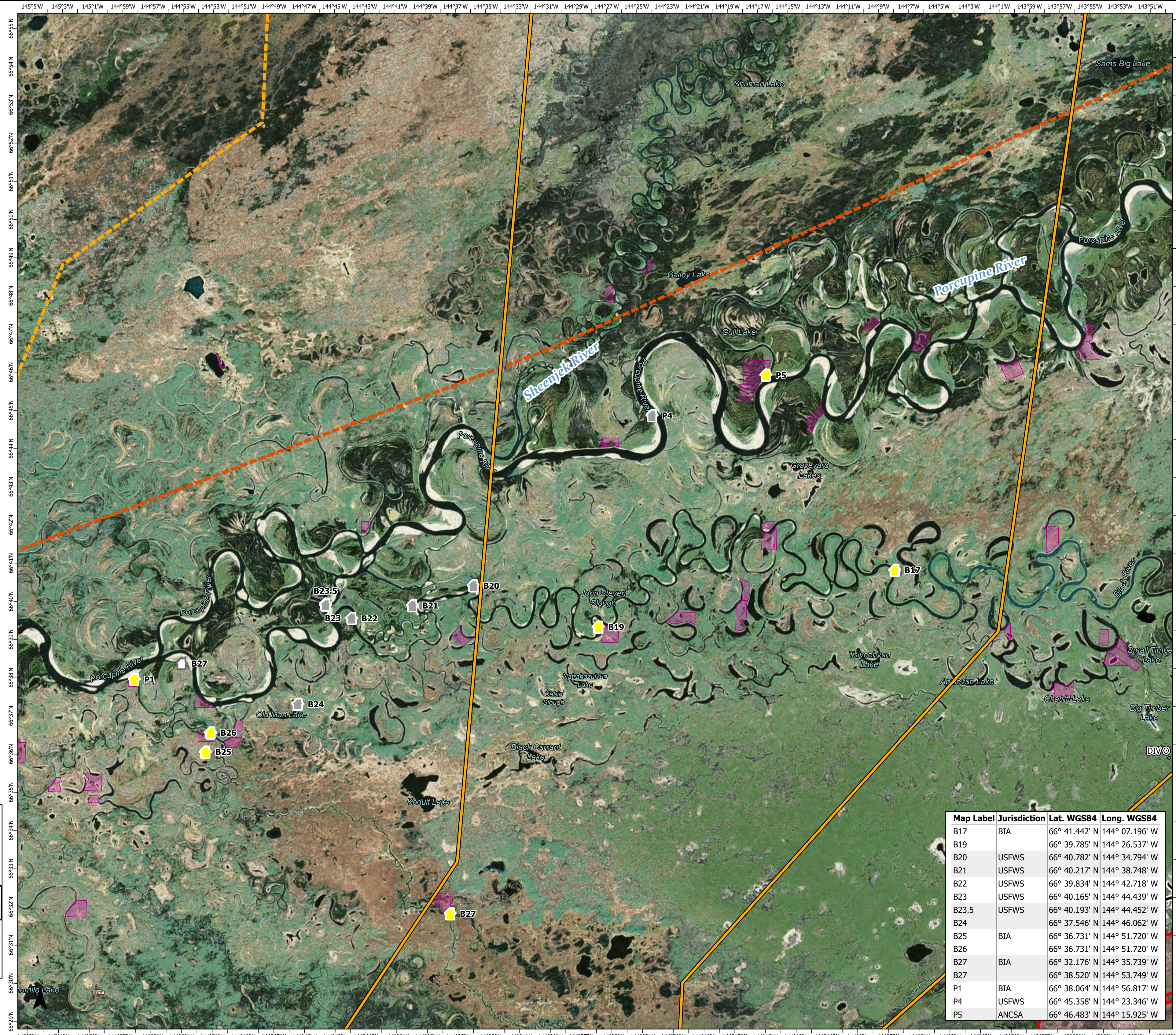
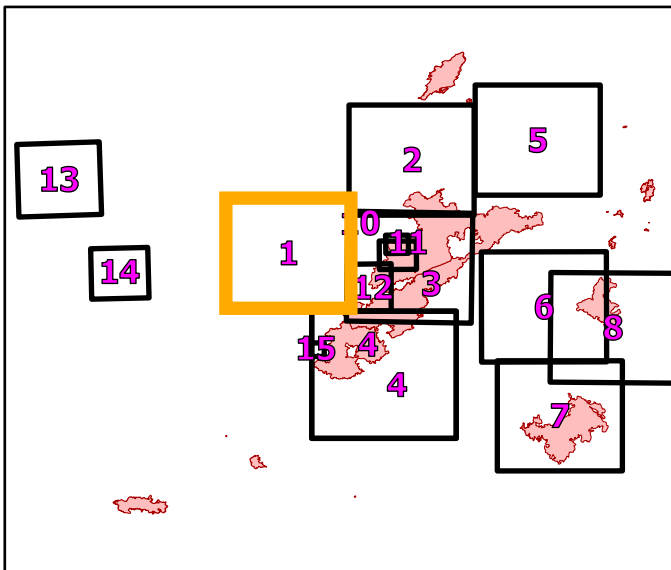
Protection Level and Site Verification

- Critical (Exists - Verified)
- Full (Exists - Verified)
- No Protection (Exists - Verified)
- Unknown (Exists - Verified)
- Critical (Not Verified)
- Full (Not Verified)
- No Protection (Not Verified)
- Unknown (Not Verified)
- Critical (Not Found - Field Visit)
- Full (Not Found - Field Visit)
- No Protection (Not Found - Field Visit)
- Unknown (Not Found - Field Visit)
- Native Allotments
- Structure Protection Area

HFS GISS EDIT

Event Line

- Uncontrolled Fire Edge
- Completed Line
- Completed Plow Line
- Completed Hand Line
- Completed Burnout
- Proposed Burnout
- Active Burnout
- Road as Completed Line
- Access or Improved Road
- Line Break Completed
- Completed Dozer Line
- Explosive Line
- Proposed Dozer Line
- Fire Break Planned or Incomplete
- Planned Fire Line
- Planned Secondary Line
- Aerial Hazard
- Aerial Ignition
- Aerial Water Drop
- Helitanker Water
- Aerial Foam Drop
- Air Tanker Foam
- Helitanker Foam
- Aerial Retardant Drop
- Air Tanker Retardant
- Temporary Flight Restriction
- UAS Launch and Recovery Zone
- Escape Route
- Repair Line
- Road Repair
- Fence
- Highlighted Manmade Feature
- Ridge/Geographic Feature
- Fire Spread Prediction
- Management Action Point
- Other
- Unknown



Map Label	Jurisdiction	Lat. WGS84	Long. WGS84
B17	BIA	66° 41.442' N	144° 07.196' W
B19	USFWS	66° 39.785' N	144° 26.537' W
B20	USFWS	66° 40.782' N	144° 34.794' W
B21	USFWS	66° 40.217' N	144° 38.748' W
B22	USFWS	66° 39.834' N	144° 42.718' W
B23	USFWS	66° 40.165' N	144° 44.439' W
B23.5	USFWS	66° 40.193' N	144° 44.452' W
B24		66° 37.546' N	144° 46.062' W
B25	BIA	66° 36.731' N	144° 51.720' W
B26		66° 36.731' N	144° 51.720' W
B27	BIA	66° 32.176' N	144° 35.739' W
B27		66° 38.520' N	144° 53.749' W
P1	BIA	66° 38.064' N	144° 56.817' W
P4	USFWS	66° 45.358' N	144° 23.346' W
P5	ANCSA	66° 46.483' N	144° 15.925' W