

Chalkyitsik Complex  
 AK-UYD-000466  
 Cornucopia Complex  
 AK-UYD-000899  
 Structure Protection



8/12/2019

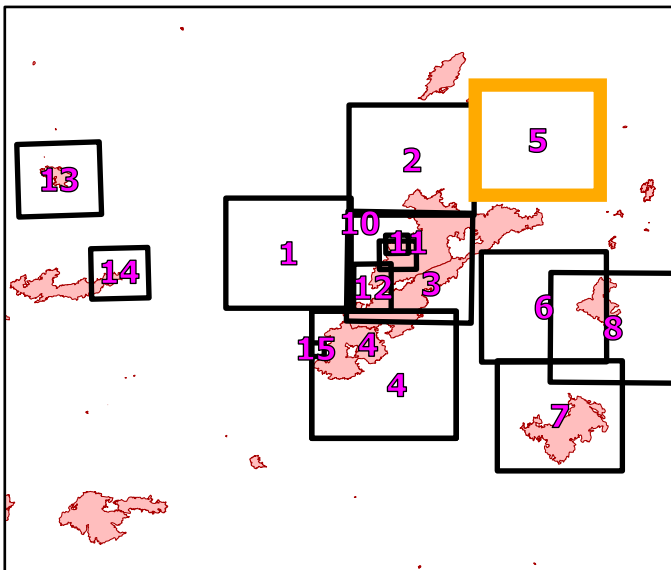
Page Name: Porcupine River East

NAD83 Datum

5

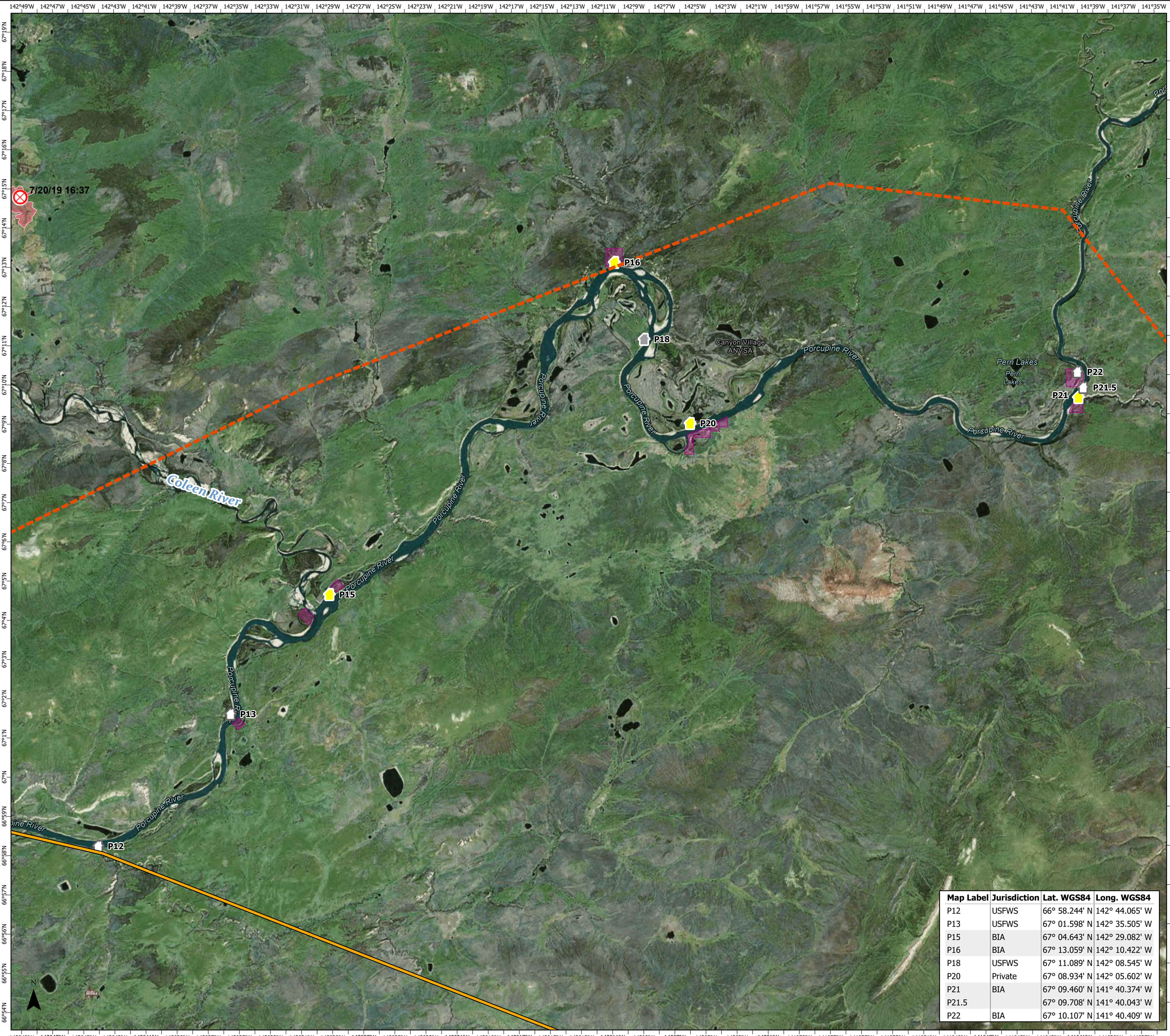
Legend

- Known Sites**
- Protection Level and Site Verification**
- Critical (Exists - Verified)
  - Full (Exists - Verified)
  - No Protection (Exists - Verified)
  - Unknown (Exists - Verified)
  - Critical (Not Verified)
  - Full (Not Verified)
  - No Protection (Not Verified)
  - Unknown (Not Verified)
  - ⊗ Critical (Not Found - Field Visit)
  - ⊗ Full (Not Found - Field Visit)
  - ⊗ No Protection (Not Found - Field Visit)
  - ⊗ Unknown (Not Found - Field Visit)
  - Native Allotments
  - Structure Protection Area
- HFS GISS EDIT**
- Event Line**
- Uncontrolled Fire Edge
  - Completed Line
  - Completed Plow Line
  - Completed Hand Line
  - Completed Burnout
  - Proposed Burnout
  - Active Burnout
  - Road as Completed Line
  - Access or Improved Road
  - Line Break Completed
  - Completed Dozer Line
  - Explosive Line
  - Proposed Dozer Line
  - Fire Break Planned or Incomplete
  - Planned Fire Line
  - Planned Secondary Line
  - Aerial Hazard
  - Aerial Ignition
  - Aerial Water Drop
  - Helitanker Water
  - Aerial Foam Drop
  - Air Tanker Foam
  - Helitanker Foam
  - Aerial Retardant Drop
  - Air Tanker Retardant
  - Temporary Flight Restriction
  - UAS Launch and Recovery Zone
  - Escape Route
  - Repair Line
  - Road Repair
  - Fence
  - Highlighted Manmade Feature
  - Ridge/Geographic Feature
  - Fire Spread Prediction
  - Management Action Point
  - Other
  - Unknown



0 0.75 1.5 3 Miles

Map Created: 8/12/2019 09:19



Map Label	Jurisdiction	Lat. WGS84	Long. WGS84
P12	USFWS	66° 58.244' N	142° 44.065' W
P13	USFWS	67° 01.598' N	142° 35.505' W
P15	BIA	67° 04.643' N	142° 29.082' W
P16	BIA	67° 13.059' N	142° 10.422' W
P18	USFWS	67° 11.089' N	142° 08.545' W
P20	Private	67° 08.934' N	142° 05.602' W
P21	BIA	67° 09.460' N	141° 40.374' W
P21.5	BIA	67° 09.708' N	141° 40.043' W
P22	BIA	67° 10.107' N	141° 40.409' W