

Chalkyitsik Complex
AK-UJD-000466
Cornucopia Complex
AK-UJD-000899
Structure Protection



8/12/2019

Page Name: Porcupine River West

NAD83 Datum

1

Legend

Known Sites

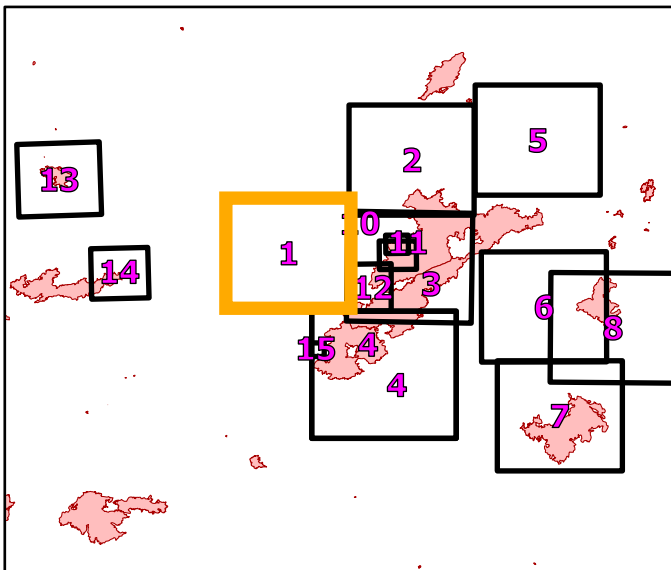
Protection Level and Site Verification

- Critical (Exists - Verified)
- Full (Exists - Verified)
- No Protection (Exists - Verified)
- Unknown (Exists - Verified)
- Critical (Not Verified)
- Full (Not Verified)
- No Protection (Not Verified)
- Unknown (Not Verified)
- ⊗ Critical (Not Found - Field Visit)
- ⊗ Full (Not Found - Field Visit)
- ⊗ No Protection (Not Found - Field Visit)
- ⊗ Unknown (Not Found - Field Visit)
- Native Allotments
- Structure Protection Area

HFS GISS EDIT

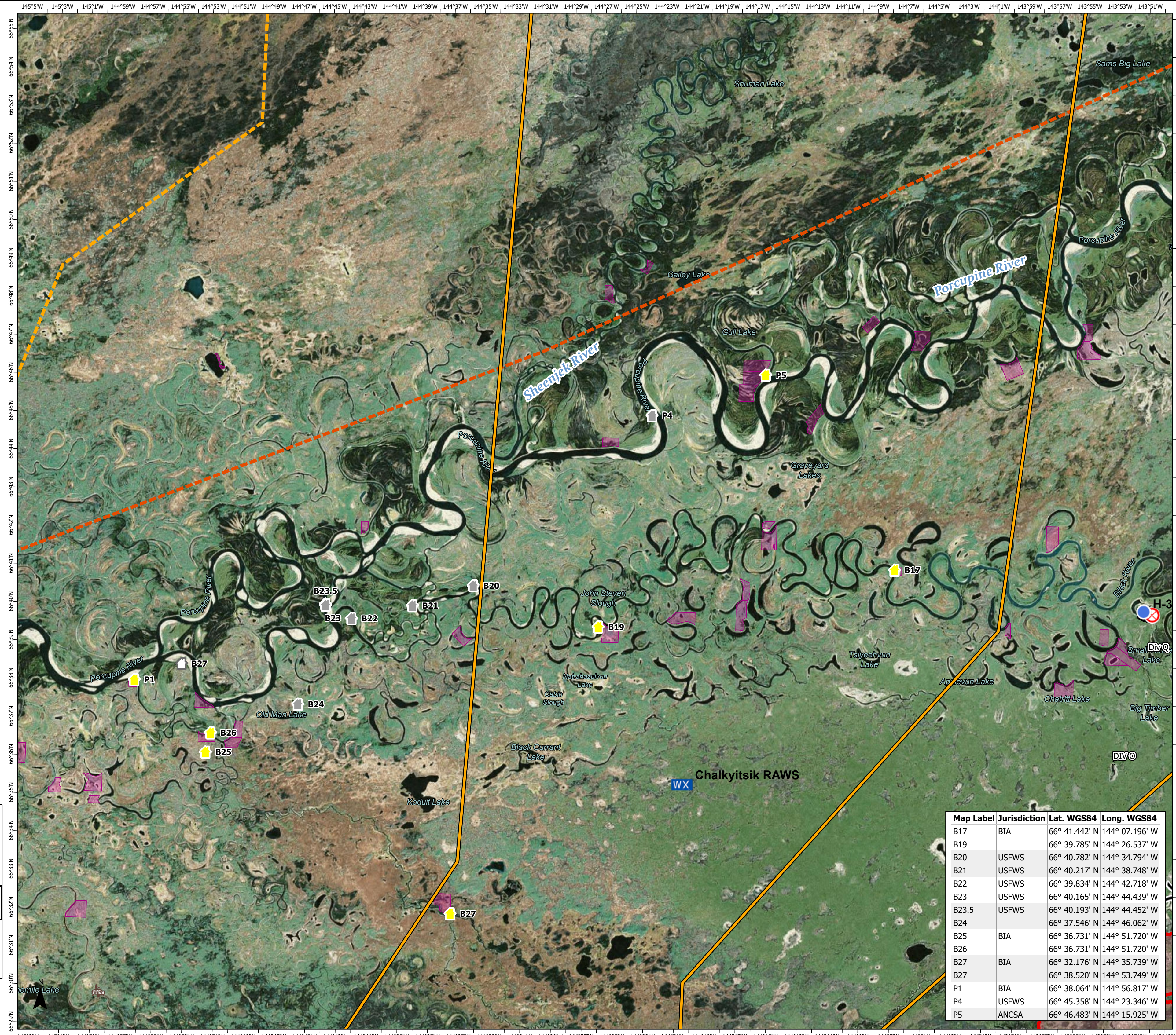
Event Line

- Uncontrolled Fire Edge
- Completed Line
- Completed Plow Line
- Completed Hand Line
- Completed Burnout
- Proposed Burnout
- Active Burnout
- Road as Completed Line
- Access or Improved Road
- Line Break Completed
- Completed Dozer Line
- Explosive Line
- Proposed Dozer Line
- Fire Break Planned or Incomplete
- Planned Fire Line
- Planned Secondary Line
- Aerial Hazard
- Aerial Ignition
- Aerial Water Drop
- Helitanker Water
- Aerial Foam Drop
- Air Tanker Foam
- Helitanker Foam
- Aerial Retardant Drop
- Air Tanker Retardant
- Temporary Flight Restriction
- UAS Launch and Recovery Zone
- Escape Route
- Repair Line
- Road Repair
- Fence
- Highlighted Manmade Feature
- Ridge/Geographic Feature
- Fire Spread Prediction
- Management Action Point
- Other
- Unknown



0 0.75 1.5 3 Miles

Map Created: 8/12/2019 09:18



| Map Label | Jurisdiction | Lat. WGS84 | Long. WGS84 |
|-----------|--------------|---------------|----------------|
| B17 | BIA | 66° 41.442' N | 144° 07.196' W |
| B19 | USFWS | 66° 39.785' N | 144° 26.537' W |
| B20 | USFWS | 66° 40.782' N | 144° 34.794' W |
| B21 | USFWS | 66° 40.217' N | 144° 38.748' W |
| B22 | USFWS | 66° 39.834' N | 144° 42.718' W |
| B23 | USFWS | 66° 40.165' N | 144° 44.439' W |
| B23.5 | USFWS | 66° 40.193' N | 144° 44.452' W |
| B24 | BIA | 66° 37.546' N | 144° 46.062' W |
| B25 | BIA | 66° 36.731' N | 144° 51.720' W |
| B26 | BIA | 66° 36.731' N | 144° 51.720' W |
| B27 | BIA | 66° 32.176' N | 144° 35.739' W |
| B27 | BIA | 66° 38.520' N | 144° 53.749' W |
| P1 | BIA | 66° 38.064' N | 144° 56.817' W |
| P4 | USFWS | 66° 45.358' N | 144° 23.346' W |
| P5 | ANCSA | 66° 46.483' N | 144° 15.925' W |