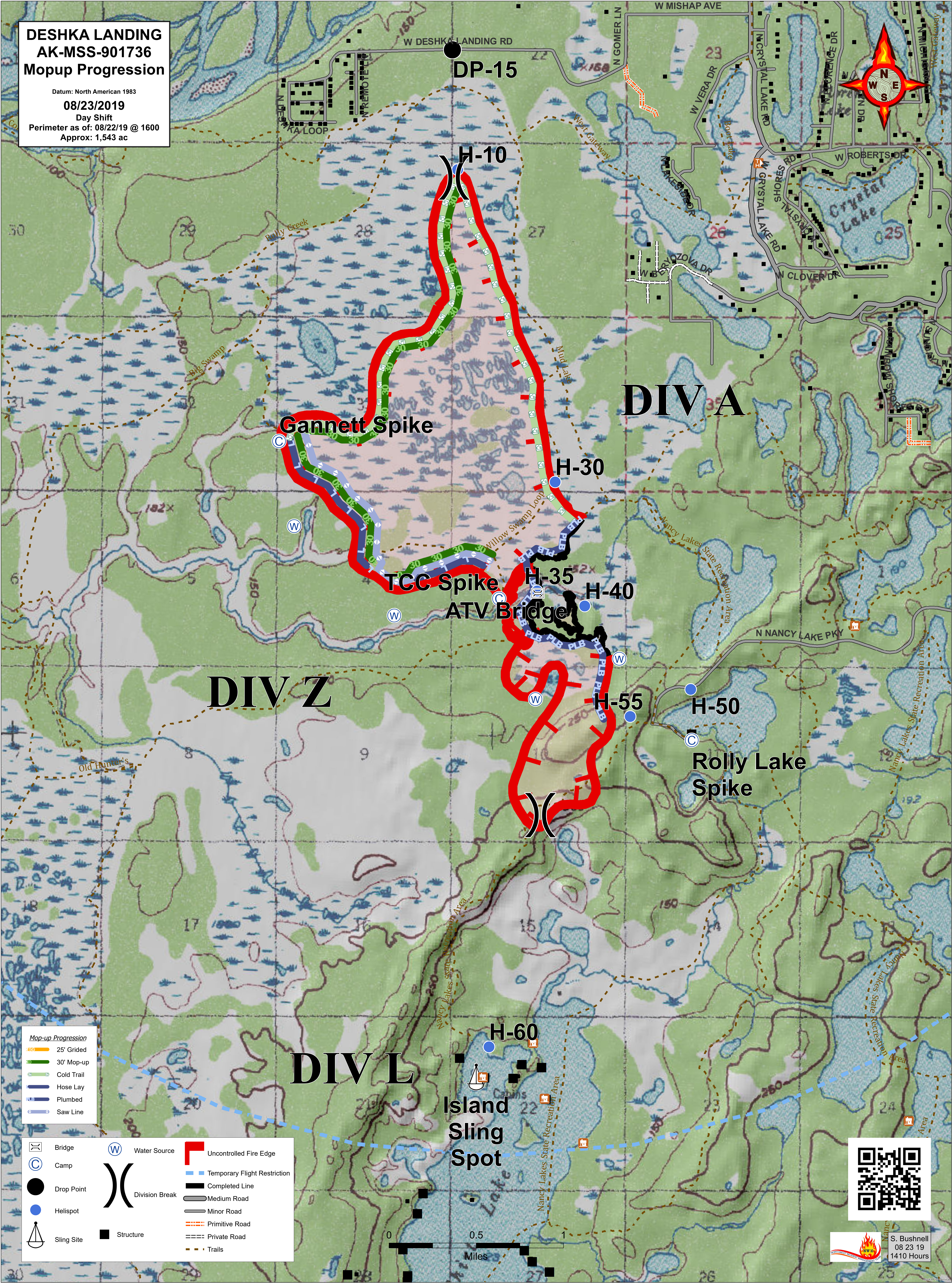


**DESKHA LANDING  
AK-MSS-901736  
Mopup Progression**

Datum: North American 1983  
**08/23/2019**  
 Day Shift  
 Perimeter as of: 08/22/19 @ 1600  
 Approx: 1,543 ac



- Mop-up Progression**
- 25' Grided
  - 30' Mop-up
  - Cold Trail
  - Hose Lay
  - Plumbed
  - Saw Line

- |  |  |  |
|--|--|--|
|  |  |  |
|  |  |  |
|  |  |  |
|  |  |  |
|  |  |  |
|  |  |  |
|  |  |  |
|  |  |  |

