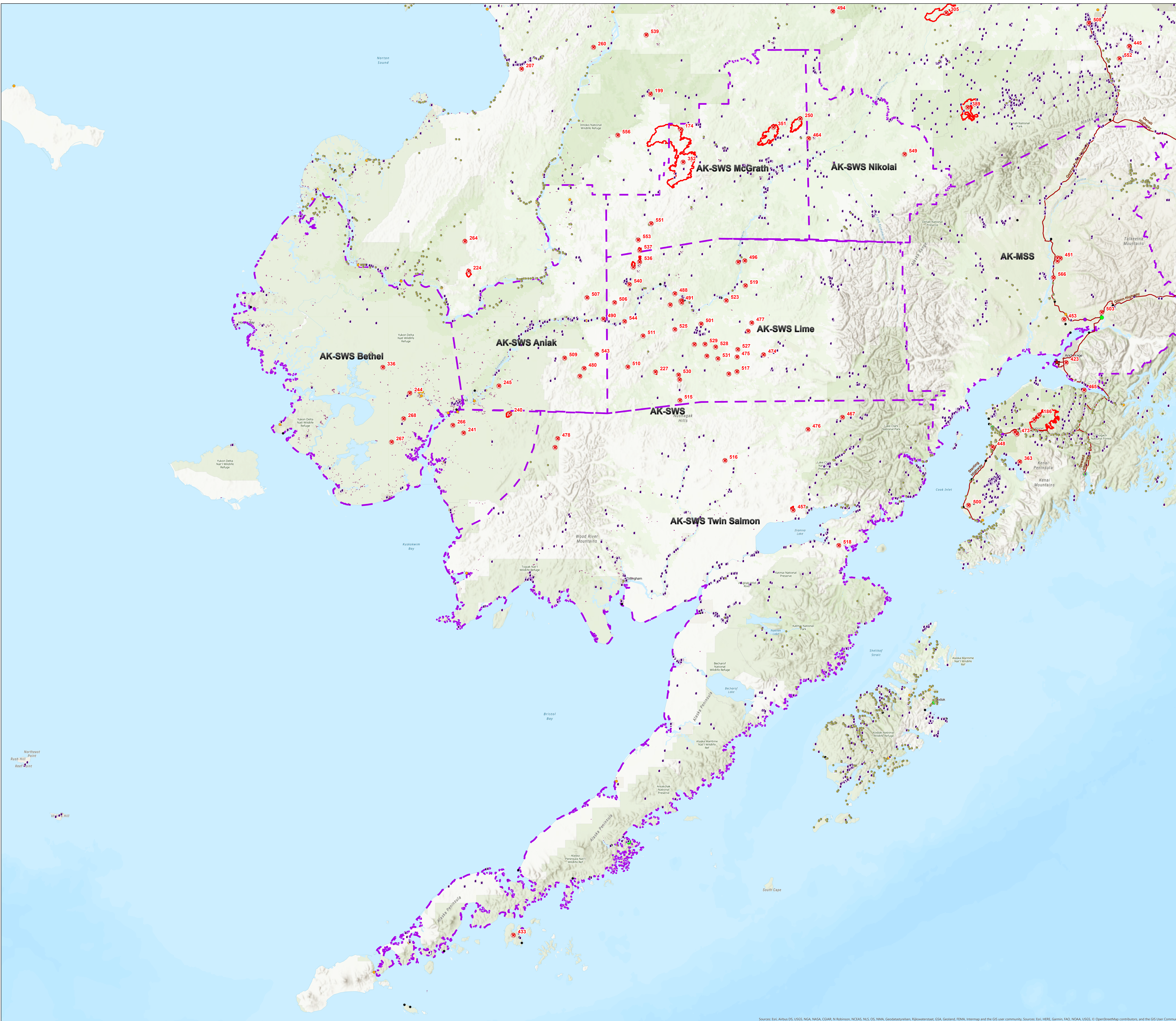


AK-SWS

Fire Zone

Current as of
7/15/2019

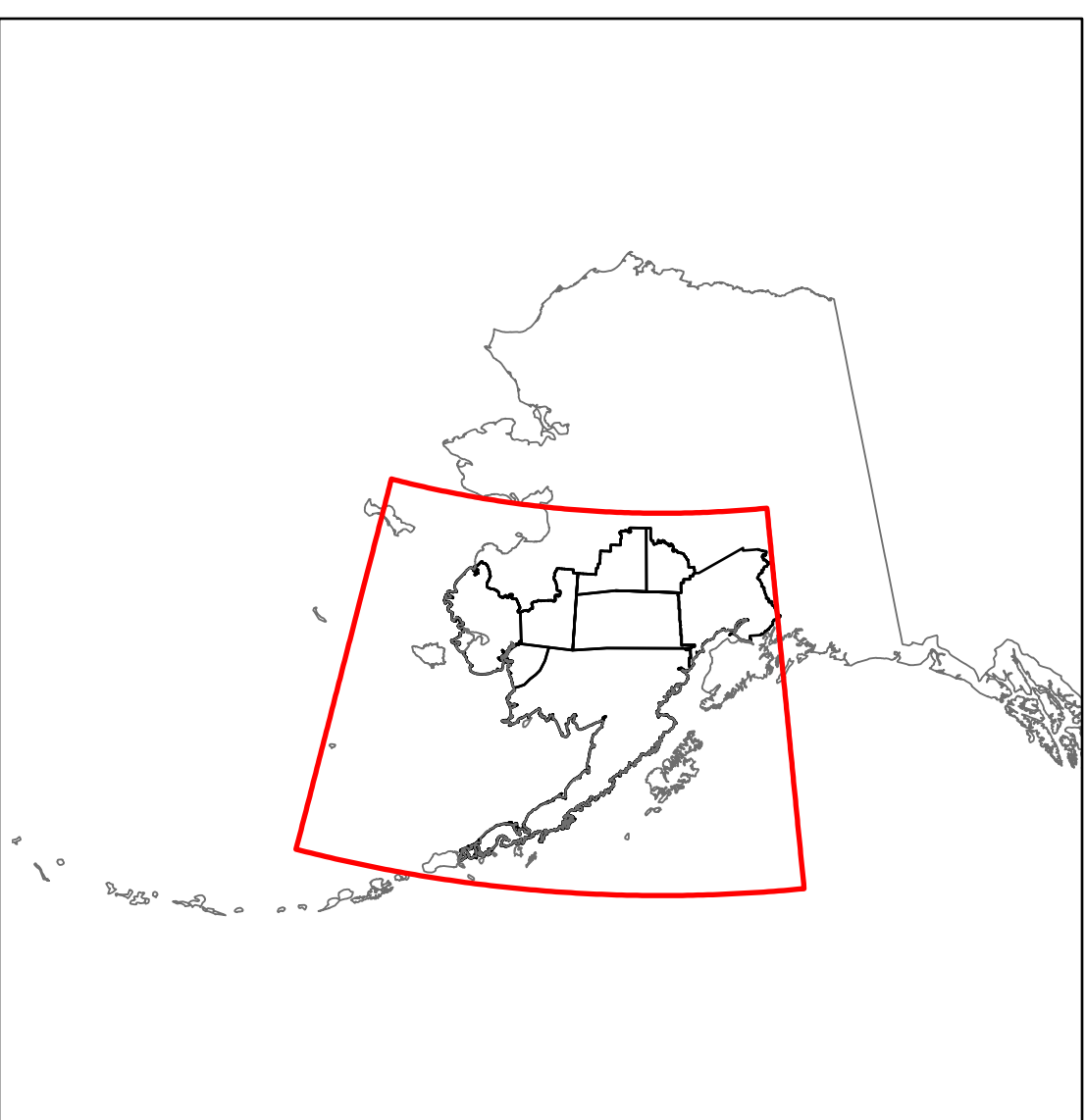


- ⊗ Approx. Fire Location
- 🔴 Active Fire Perimeter
- 🏠 Structure
- ⚡ Mining Camp/Equipment
- 📍 Known Site, Other
- Third Class City
- Second Class City
- First Class City
- Home Rule City
- ★ Unified Home Rule Municipality
- State Highways
- Native Allotments

Date Created: 7/15/2019 12:58 PM

N

0 210 420 840 1,260 1,680 Miles



Sources: Esri, Airbus DS, USGS, NOAA, NASA, CGAR, N Robinson, NCEAS, NLS, OS, NMA, Geodatastyrelsen, Rijkswaterstaat, GSA, Geoland, FEMA, Intermap and the GIS user community. Sources: Esri, HERE, Garmin, FAO, NOAA, USGS, © OpenStreetMap contributors, and the GIS User Community