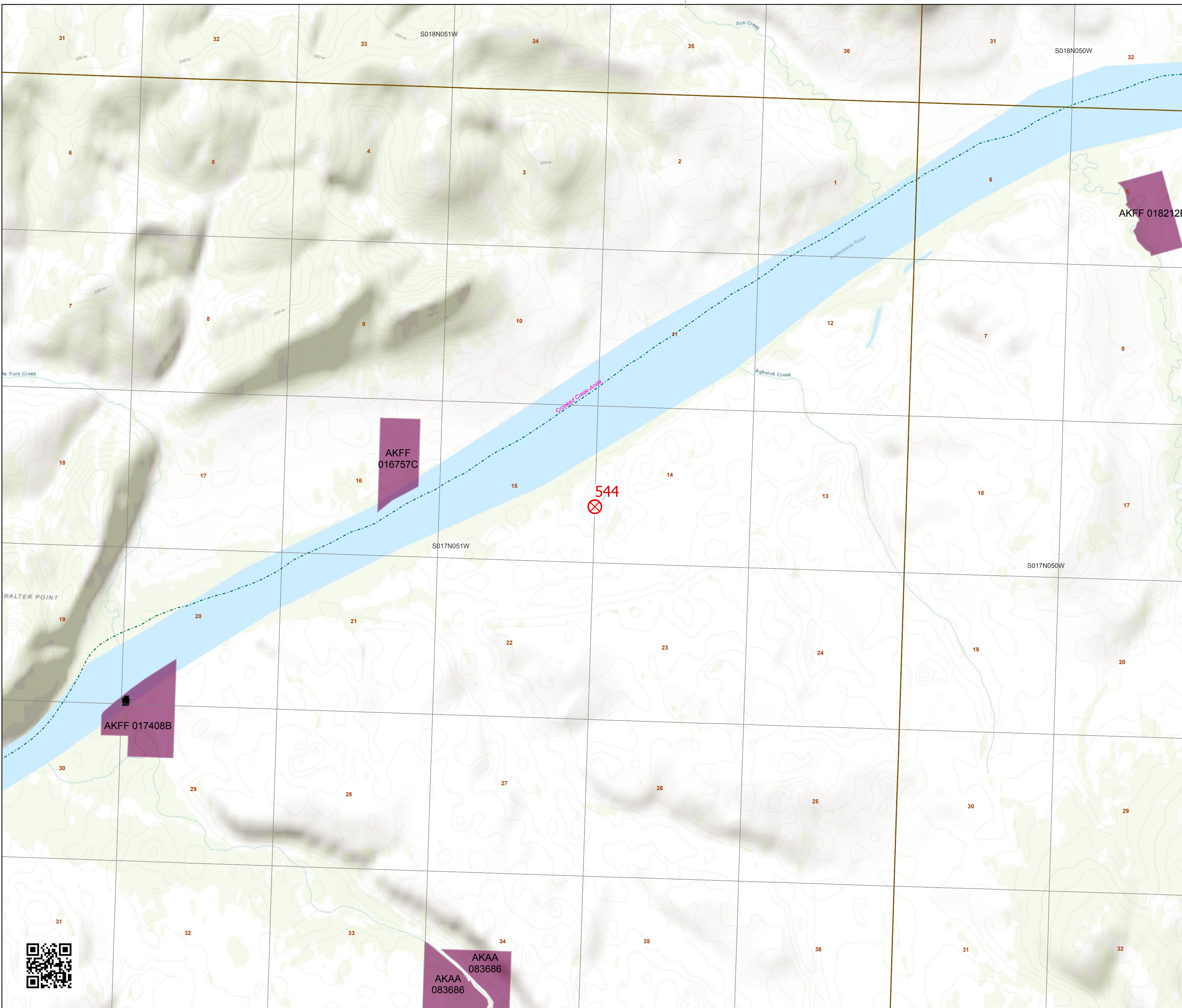


**Aghaluk Creek
Initial Attack Map
1000 ac. as of
7/13/2019 10:08:25 PM**



Printed on
7/18/2019 @ 18:07



Active_Fires_2019

- Approx. Fire Location

RS2477

- RS2477

Forestry Roads

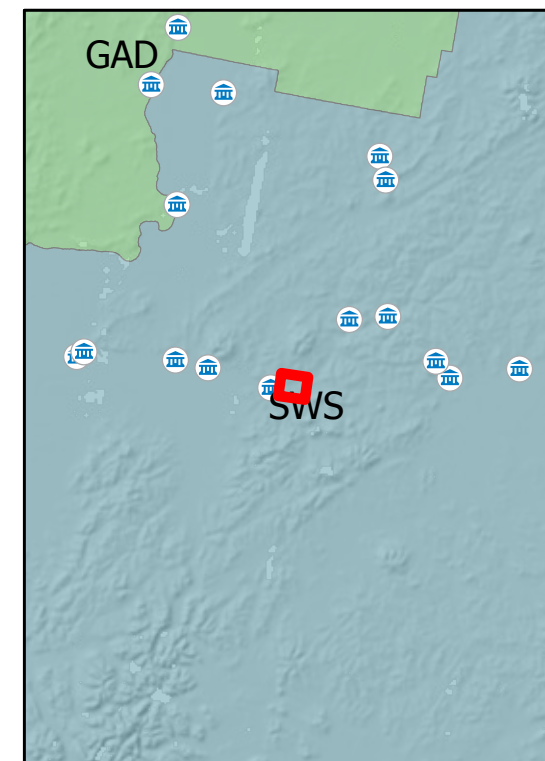
- Active
- Closed
- Inactive
- Proposed

FAA Runways

- 5000' or greater
- Between 3000' and 4999'
- Between 1800' and 2999'
- Less than 1800'

NonConfidential Sites

- Camp
- Communications
- Mining Camp/Equipment
- Other
- RAWS
- Structure



Alaska Albers Projection
NAD 83 Datum
GISS: NWIMT12

0 0.13 0.25 0.5
Miles

