

**Bakbuk Creek  
Initial Attack Map  
775.8 ac. as of  
6/11/2019 10:21:28 PM**



Printed on  
7/18/2019 @ 16:11

**Active\_Fires\_2019**

⊗ Approx. Fire Location

**Forestry Roads**

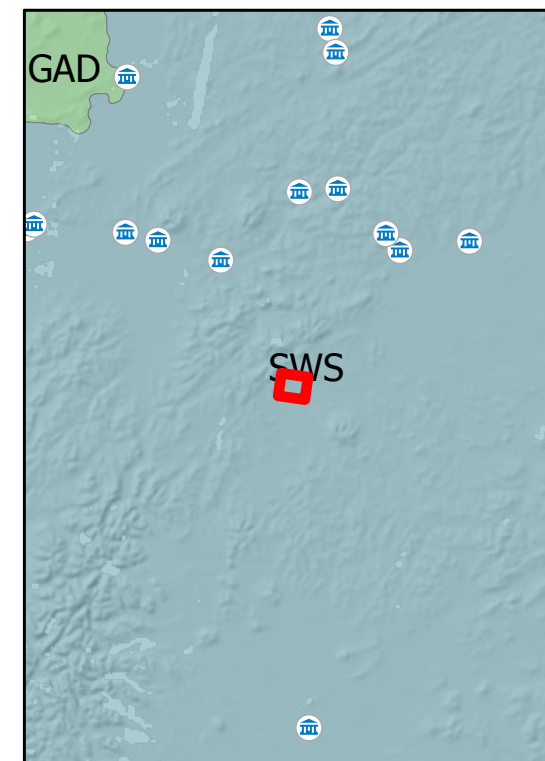
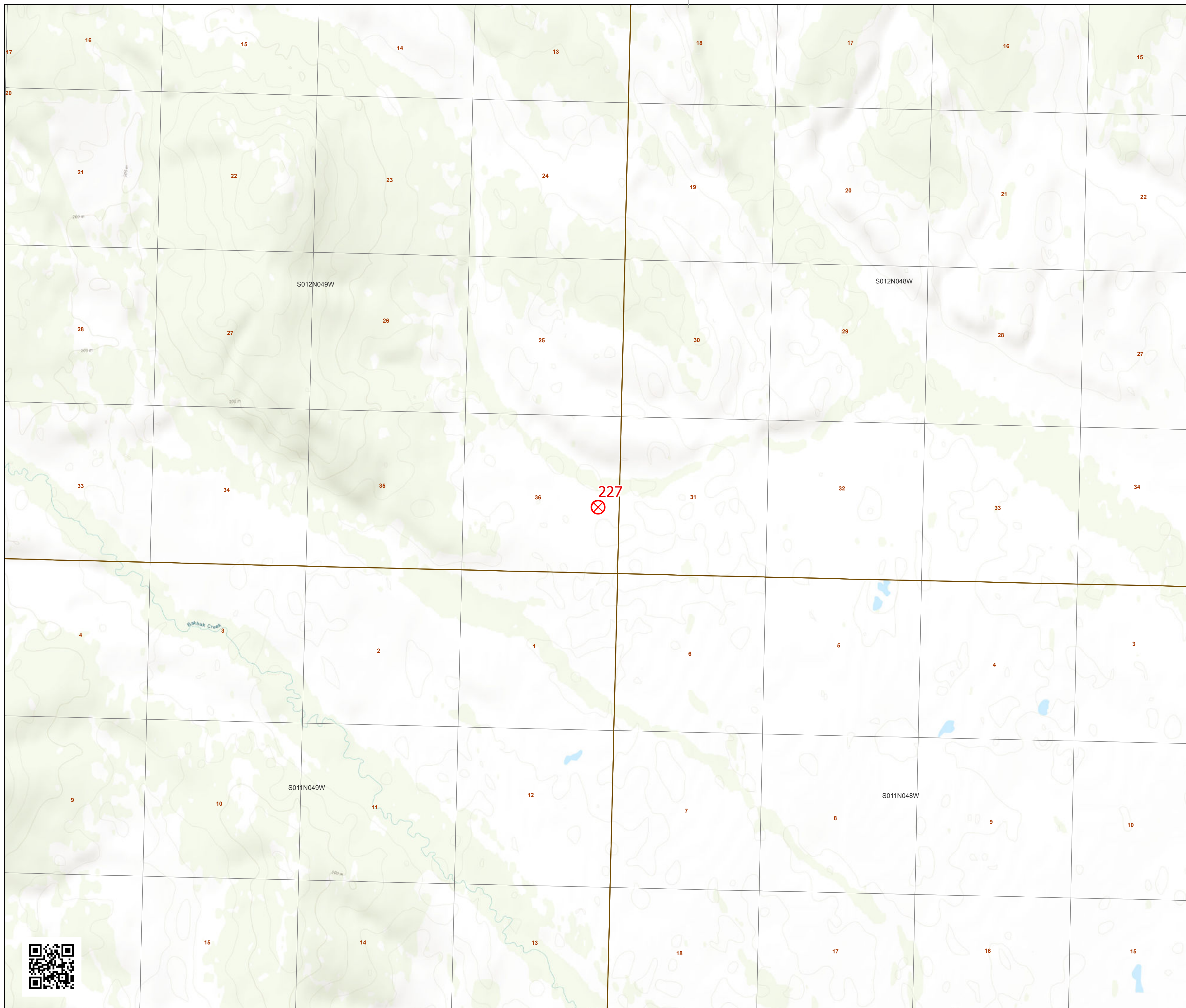
- Active
- - - - - Closed
- Inactive
- - - - - Proposed

**FAA Runways**

- ✈ 5000' or greater
- ✈ Between 3000' and 4999'
- ✈ Between 1800' and 2999'
- ✈ Less than 1800'

**NonConfidential Sites**

- Ⓐ Camp
- Ⓜ Communications
- ⚡ Mining Camp/Equipment
- Ⓜ Other
- WX RAWs
- 🏠 Structure



Alaska Albers Projection  
NAD 83 Datum  
GISS: NWIMT12

0 0.13 0.25 0.5  
Miles

