

**Devil's Elbow
Initial Attack Map
7500 ac. as of
7/11/2019 4:13:25 PM**



Printed on
7/18/2019 @ 16:55

Active_Fires_2019

Approx. Fire Location

Forestry Roads

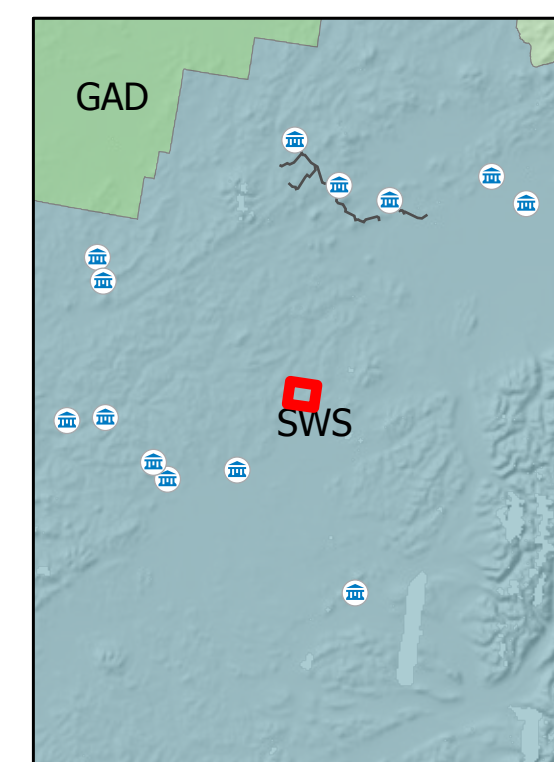
- Active
- Closed
- Inactive
- Proposed

FAA Runways

- 5000' or greater
- Between 3000' and 4999'
- Between 1800' and 2999'
- Less than 1800'

NonConfidential Sites

- Camp
- Communications
- Mining Camp/Equipment
- Other
- RAWs
- Structure



Alaska Albers Projection
NAD 83 Datum
GISS: NWIMT12

