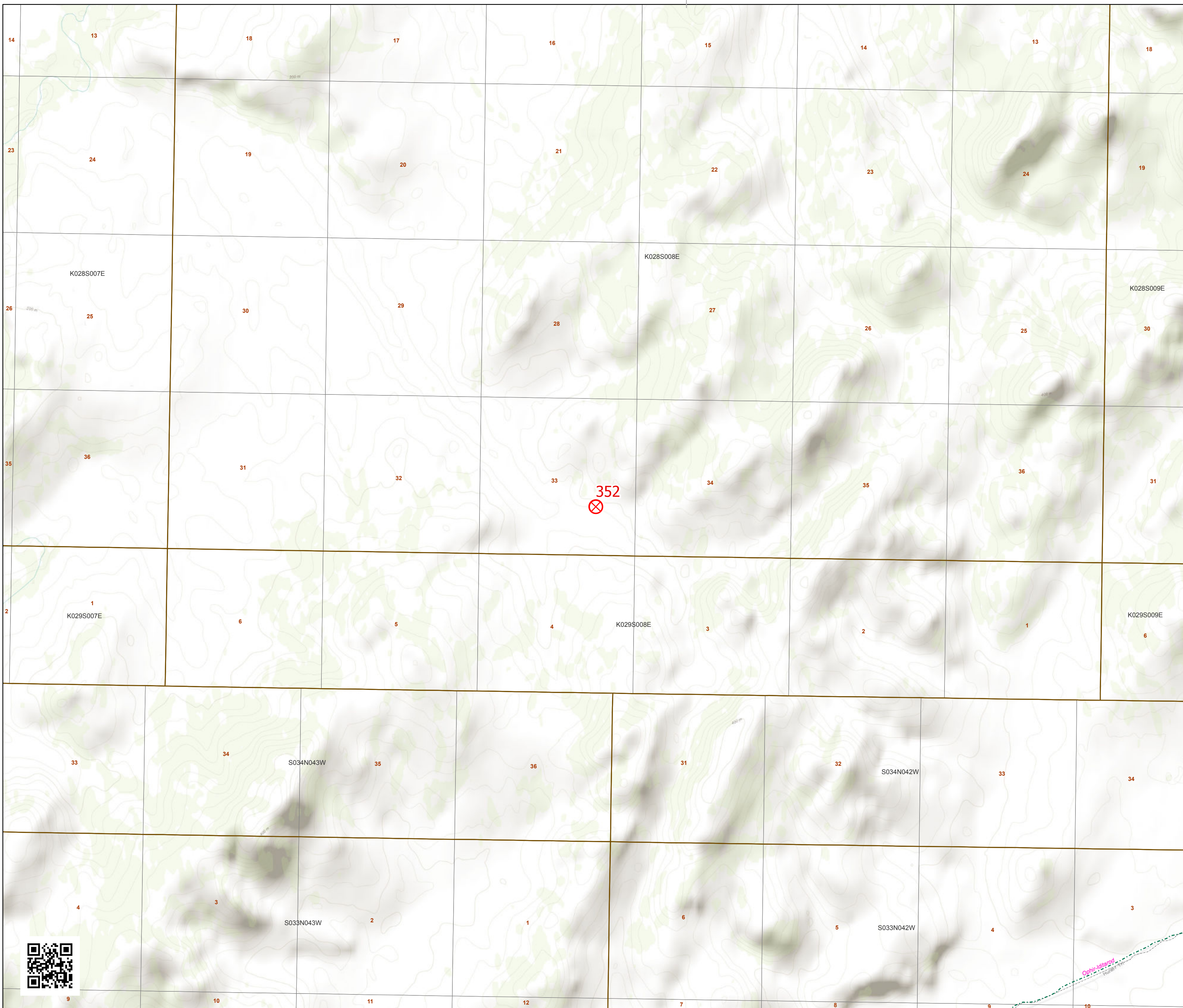


**Hurst Creek  
Initial Attack Map  
85260.5 ac. as of  
6/23/2019 4:31:10 AM**



Printed on  
7/18/2019 @ 16:20



**Active Fires\_2019**

Approx. Fire Location

**RS2477**

RS2477

**Trails**

Trails

**Forestry Roads**

Active

Closed

Inactive

Proposed

**FAA Runways**

5000' or greater

Between 3000' and 4999'

Between 1800' and 2999'

Less than 1800'

**NonConfidential Sites**

Camp

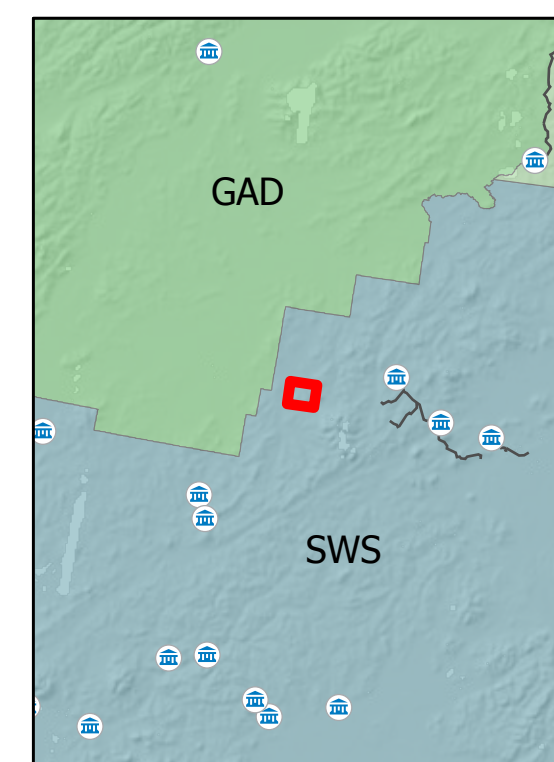
Communications

Mining Camp/Equipment

Other

RAWS

Structure



Alaska Albers Projection  
NAD 83 Datum  
GISS: NWIMT12

