

**Kisarlik River
Initial Attack Map
78 ac. as of
6/14/2019 4:46:59 AM**



Printed on
7/18/2019 @ 16:15

Active_Fires_2019

Approx. Fire Location

RS2477

RS2477

Forestry Roads

Active

Closed

Inactive

Proposed

FAA Runways

5000' or greater

Between 3000' and 4999'

Between 1800' and 2999'

Less than 1800'

NonConfidential Sites

Camp

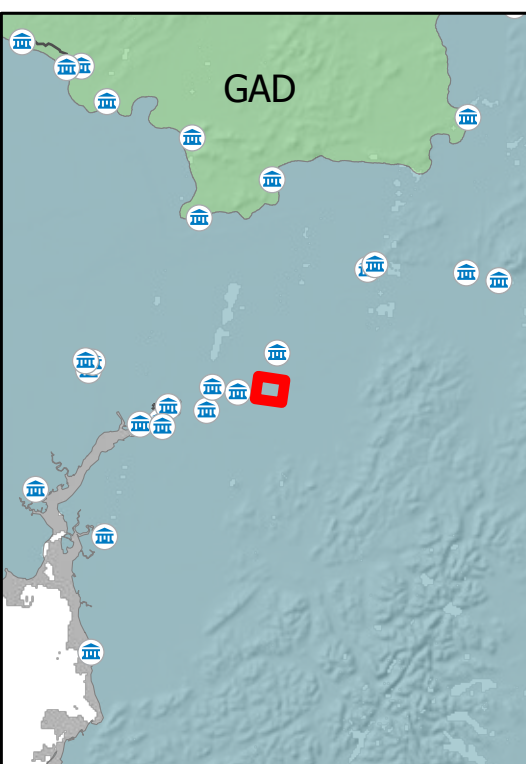
Communications

Mining Camp/Equipment

Other

RAWs

Structure



Alaska Albers Projection
NAD 83 Datum
GISS: NWMT12

