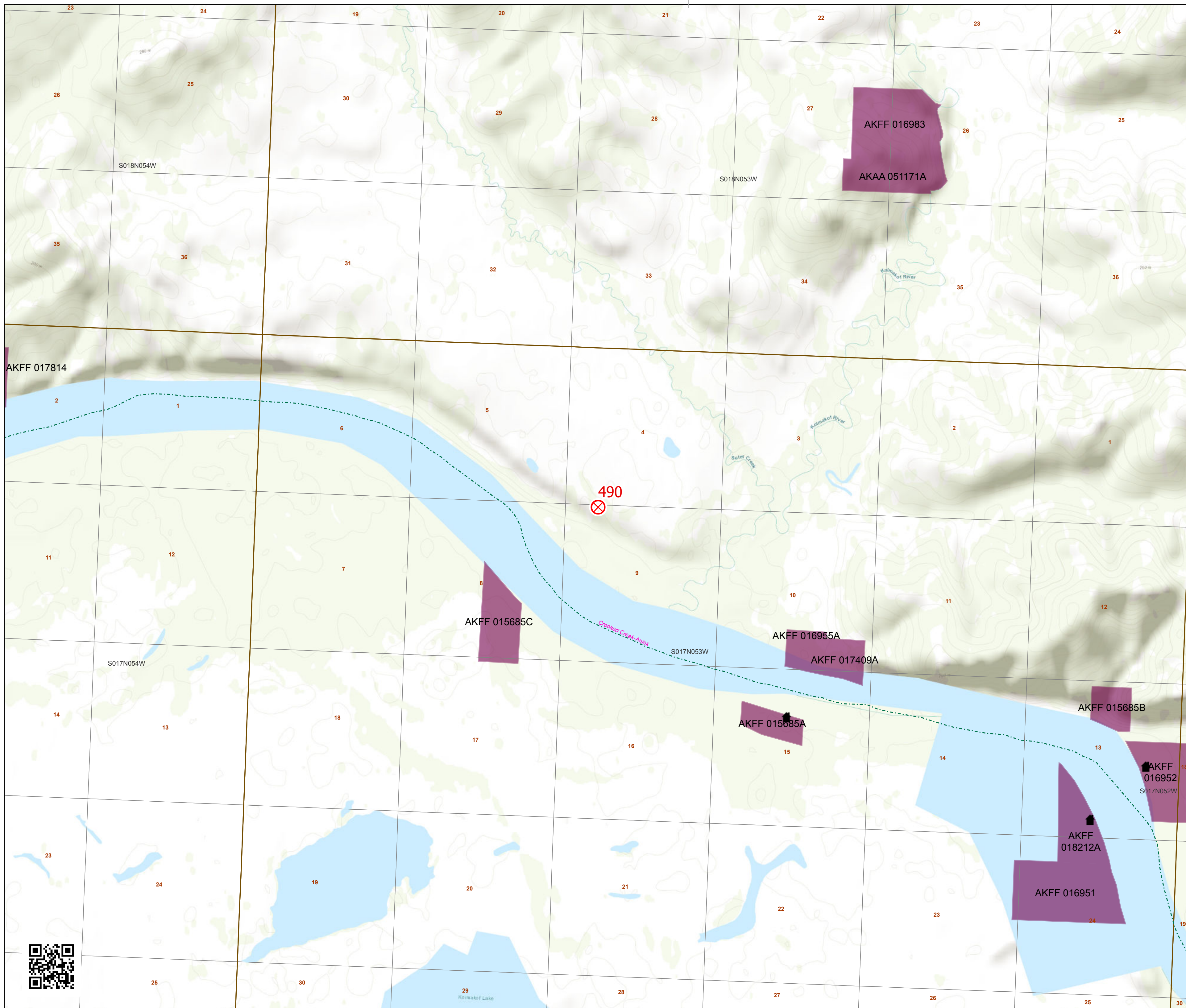


**Kolmakof Hills
Initial Attack Map
9572.2 ac. as of
7/11/2019 4:17:45 AM**



Printed on
7/18/2019 @ 16:53



Active_Fires_2019

⊗ Approx. Fire Location

RS2477

--- RS2477

Forestry Roads

— Active

- - - Closed

— Inactive

--- Proposed

FAA Runways

✈ 5000' or greater

✈ Between 3000' and 4999'

✈ Between 1800' and 2999'

✈ Less than 1800'

NonConfidential Sites

⛕ Camp

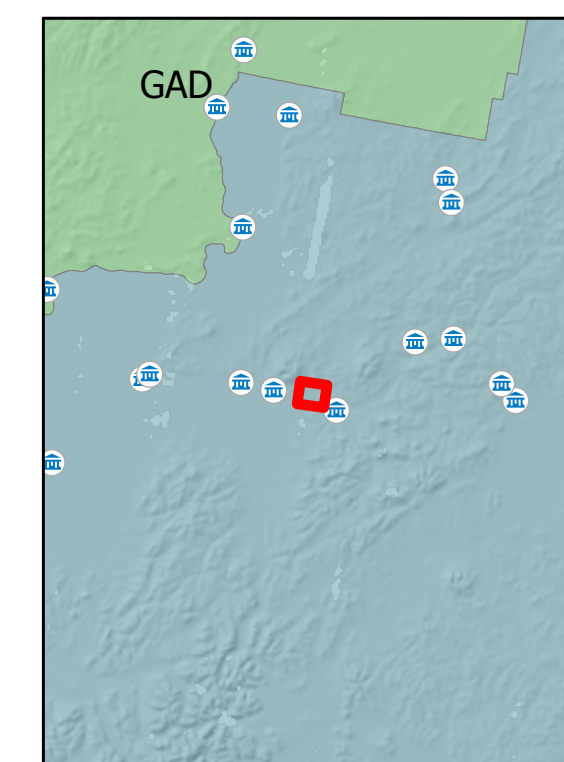
📡 Communications

⚡ Mining Camp/Equipment

🏠 Other

WX RAWS

🏠 Structure



Alaska Albers Projection
NAD 83 Datum
GISS: NWIMT12

