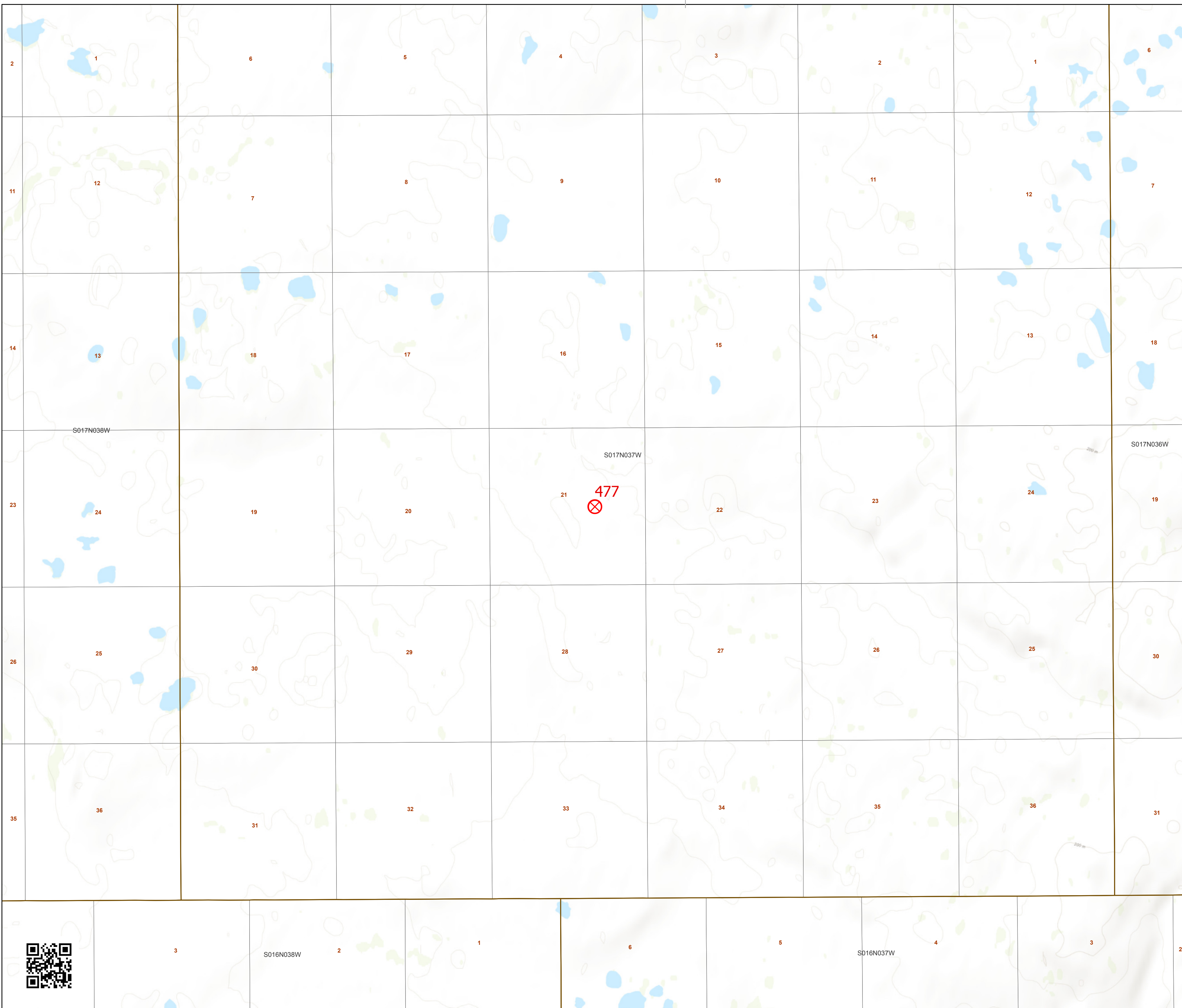


**Stony River Flats  
Initial Attack Map  
314 ac. as of  
7/10/2019 10:05:41 PM**



Printed on  
7/18/2019 @ 16:47



**Active\_Fires\_2019**

Approx. Fire Location

**Forestry Roads**

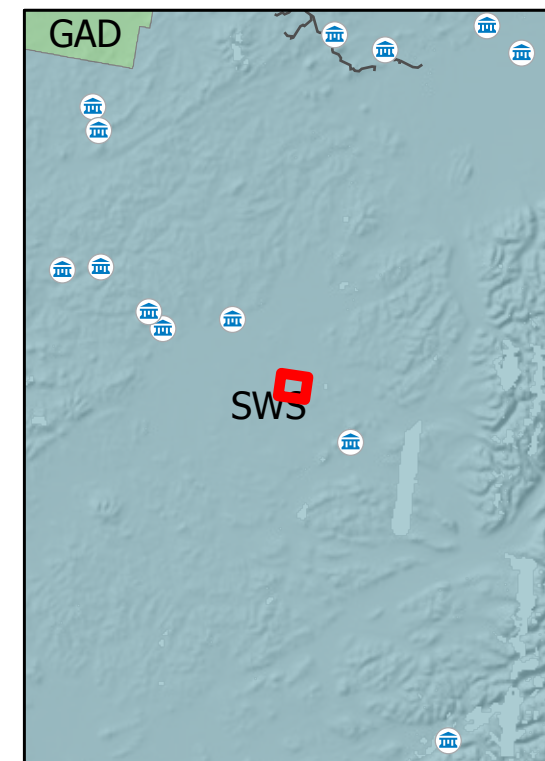
- Active
- Closed
- Inactive
- Proposed

**FAA Runways**

- 5000' or greater
- Between 3000' and 4999'
- Between 1800' and 2999'
- Less than 1800'

**NonConfidential Sites**

- Camp
- Communications
- Mining Camp/Equipment
- Other
- RAWS
- Structure



Alaska Albers Projection  
NAD 83 Datum  
GISS: NWIMT12

0 0.13 0.25 0.5  
Miles

