

158°40'0"W 158°37'30"W 158°35'0"W 158°32'30"W 158°30'0"W 158°27'30"W 158°25'0"W 158°22'30"W 158°20'0"W 158°17'30"W 158°15'0"W 158°12'30"W 158°10'0"W 158°7'30"W 158°5'0"W 158°2'30"W 158°0'0"W 157°57'30"W 157°55'0"W 157°52'30"W 157°50'0"W 157°47'30"W

534 Grouse Creek Topo Ops Map Est. 4,700 ac. as of 07/13/2019

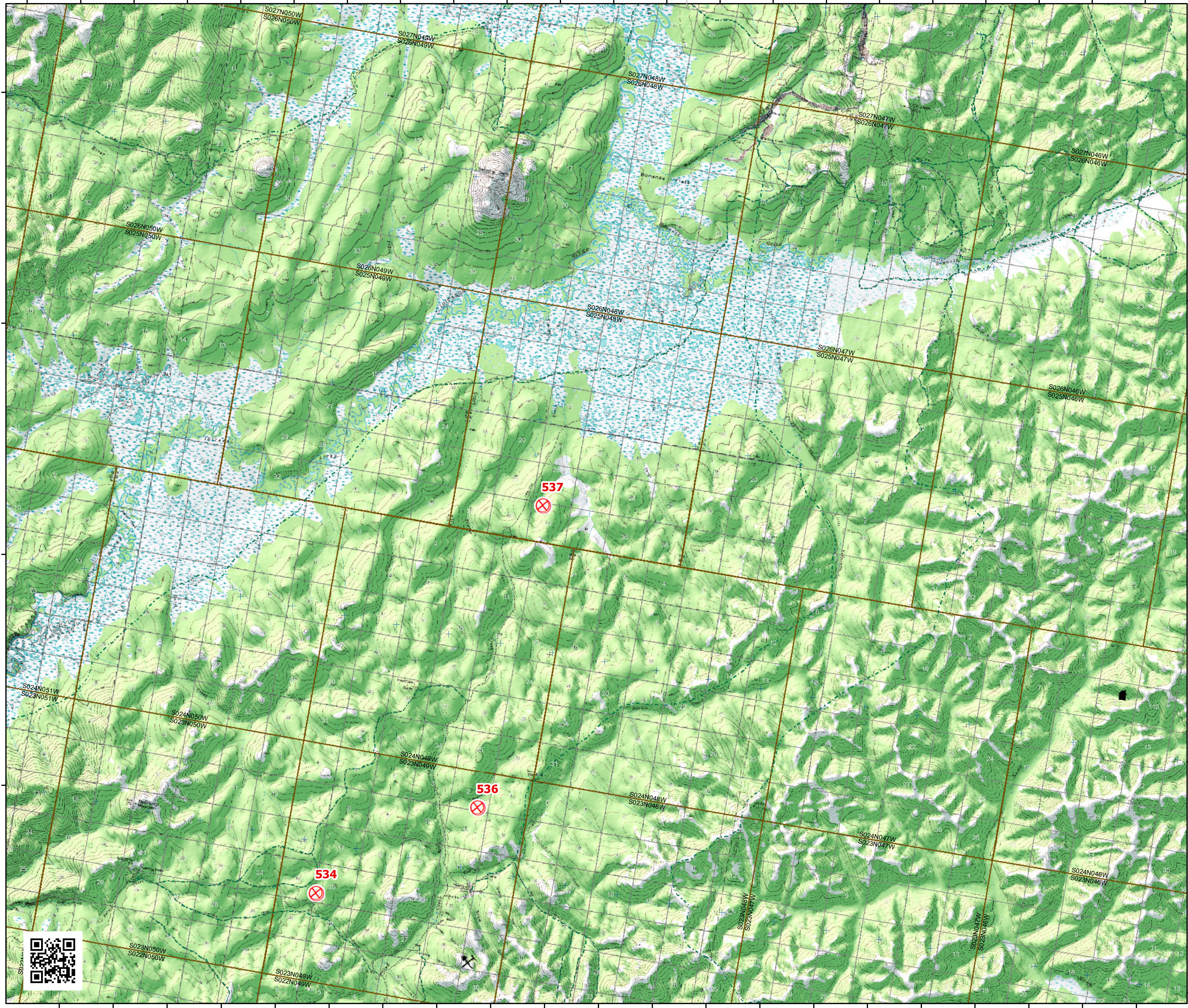
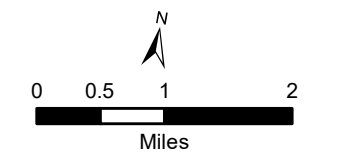


Printed:
7/13/2019 @ 12:54

- Fire Origin
- Mining Camp/Equip...
- Structure



Alaska Albers Projection
NAD 83 Datum
GISS: NWIMT12



158°30'0"W 158°27'30"W 158°25'0"W 158°22'30"W 158°20'0"W 158°17'30"W 158°15'0"W 158°12'30"W 158°10'0"W 158°7'30"W 158°5'0"W 158°2'30"W 158°0'0"W 157°57'30"W 157°55'0"W 157°52'30"W 157°50'0"W 157°47'30"W 157°45'0"W 157°42'30"W 157°40'0"W

